

2011 Sequoia



Limited 4x2 shown in Sandy Beach Metallic.



Platinum 4x4 interior shown in Graphite.

Adventure awaits in the versatile 8-passenger¹ Toyota Sequoia. Available Adaptive Variable Suspension (AVS) and Multi-Mode 4WD make it ideal both on- and off-road. There's an available power reclining and folding third-row seat. A power rear liftgate that opens to 120.1 cu. ft. of cargo space². An available 7400-lb. towing capacity.³ And the standard Star Safety System™, which lets you head out with confidence. The 2011 Toyota Sequoia. **Moving Forward.**



TOP STANDARD AND AVAILABLE FEATURES⁴

40/20/40 split, reclining and sliding second-row seats USB⁵ port with iPod^{®6} connectivity *Bluetooth*^{®7} wireless technology Power liftgate Eight standard airbags⁸

1. Standard on SR5 and Limited. Not available on Platinum. **2.** See footnote 8 in Disclaimers section. **3.** See footnote 7 in Disclaimers section. **4.** Features listed not available on all model grades. **5.** See footnote 12 in Disclaimers section. **6.** See footnote 13 in Disclaimers section. **7.** See footnote 14 in Disclaimers section. **8.** See footnote 22 in Disclaimers section.



SR5 fabric in Graphite



SR5 fabric in Sand Beige



SR5 Sport fabric in Black



Limited leather in Graphite



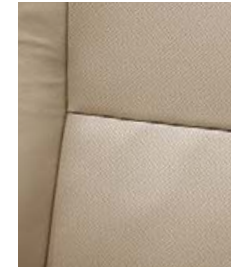
Limited leather in Sand Beige



Platinum perforated leather in Red Rock



Platinum perforated leather in Graphite



Platinum perforated leather in Sand Beige

How many colors does it come in?

Sequoia offers eight exterior colors to choose from — easy to remember since it also offers available seating for eight. And each exterior color offers two or three interior colors to match. Decisions, decisions.



BLACK
Graphite, Red Rock¹ or Sand Beige interior



PYRITE MICA
Graphite, Red Rock¹ or Sand Beige interior



CASSIS PEARL
Graphite, Red Rock¹ or Sand Beige interior



SANDY BEACH METALLIC
Red Rock¹ or Sand Beige interior



MAGNETIC GRAY METALLIC
Graphite or Red Rock¹ interior



SILVER SKY METALLIC
Graphite or Red Rock¹ interior



BLIZZARD PEARL^{1,2}
Graphite, Red Rock¹ or Sand Beige interior



SUPER WHITE³
Graphite or Sand Beige interior

WHEELS

- 1 SR5 standard 18-in. alloy wheel
- 2 SR5 available 20-in. Sport alloy wheel
- 3 Limited standard 20-in. alloy wheel
- 4 Platinum standard 20-in. diamond-cut-finish alloy wheel



Specifications

MECHANICAL AND PERFORMANCE	SR5	LIMITED	PLATINUM
Engine			
4.6-Liter DOHC 32-Valve i-FORCE V8 with Dual Independent Variable Valve Timing with intelligence (VVT-i); 310 hp @ 5400 rpm; 327 lb.-ft. @ 3400 rpm	Standard	NA	NA
5.7-Liter DOHC 32-Valve i-FORCE V8 with Dual Independent Variable Valve Timing with intelligence (VVT-i); 381 hp @ 5600 rpm; 401 lb.-ft. @ 3600 rpm	Available	Standard	Standard
5.7-Liter DOHC 32-Valve i-FORCE V8 E85 Flex Fuel engine with Dual Independent Variable Valve Timing with intelligence (VVT-i); 381 hp @ 5600 rpm; 401 lb.-ft. @ 3600 rpm	Available ⁴	Available ⁴	Available ⁴
Emission rating	Ultra Low Emission Vehicle II (ULEV-II)		
Ignition	Electronic, with Toyota Direct Ignition (TDI)		
Transmission	6-speed Electronically Controlled automatic Transmission with intelligence (ECT-i); sequential shift mode and uphill/downhill shift logic; TOW/HAUL mode		
Drivetrain			
Rear-wheel drive	Standard	Standard	Standard
Multi-Mode 4WD system with Torsen [®] limited-slip center differential with locking feature	Available	Available	Available
Body construction	Reinforced body-on-frame construction		
Suspension			
Front high-mounted coil-spring independent double-wishbone front suspension with low-pressure gas-filled shock absorbers and hollow stabilizer bar; rear coil-spring independent double-wishbone suspension with low-pressure gas-filled shock absorbers and hollow stabilizer bar	Standard	Standard	NA
Electronically Modulated Air Suspension	NA	NA	Standard
Adaptive Variable Suspension (AVS) system	NA	NA	Standard
Steering	Engine speed-sensing Variable Flow Control (VFC) power-assisted rack-and-pinion		
Turning circle diameter, curb to curb (ft.)	39.2	39.2	39.2
Brakes: power-assisted 4-wheel Anti-lock Brake System (ABS) with Electronic Brake-force Distribution (EBD) and Brake Assist (BA) ⁶	Standard	Standard	Standard
EXTERIOR DIMENSIONS (in.)			
Overall width/height/length	79.9/77.0/205.1	79.9/77.0/205.1	79.9/77.0/205.1
Wheelbase	122.0	122.0	122.0
Track (front/rear)	67.9/69.1	67.9/69.1	67.9/69.1
INTERIOR DIMENSIONS (in.) (front/second-row/third-row seats)			
Head room with moonroof	38.3/38.9/36.0	38.3/38.9/36.0	38.3/38.9/36.0
Shoulder room	66.4/66.1/66.0	66.4/66.1/66.0	66.4/66.1/66.0
Hip room	61.5/62.6/50.4	61.5/62.6/50.4	61.5/62.6/50.4
Leg room	42.5/36.5/35.3	42.5/36.5/35.3	42.5/36.5/35.3
Seating capacity	8/7 (optional)	8/7 (optional)	7
OFF-HIGHWAY			
Approach/departure angle (degrees)	4x2: 27/20; 4x4: 27/21	4x2: 27/20; 4x4: 27/21	4x2: 27/20; 4x4: 27/21
Ground clearance (in.) (4x2/4x4)	9.9/10.0	9.9/10.0	9.9/10.0
Skid plates: on engine and transfer case (4x4 models)	Standard	Standard	Standard
WEIGHTS AND CAPACITIES			
Curb weight (lb.) (4x2/4x4)	5680/5920 (4.6L V8); 5730/5985 (5.7L V8)	5730/5985	5745/6045
Gross Vehicle Weight Rating (GVWR) (lb.) (4x2/4x4)	7000/7300 (4.6L V8); 7100/7300 (5.7L V8)	7100/7300	7100/7300
Gross Combined Weight Rating (GCWR) (lb.) (4x2/4x4)	16,960/17,200 (4.6L V8); 17,080/17,280 (5.7L V8)	17,080/17,280	17,080/17,280
Towing capacity ⁷ (lb.) (4x2/4x4)	6900/6600 (4.6L V8); 7400/7100 (5.7L V8)	7300/7100	7200/7000
Cargo volume ⁸ (cu. ft.) (behind front/second-row/third-row seats)	120.1/66.6/18.9	120.1/66.6/18.9	120.1/66.6/18.9
Fuel tank (gal.)	26.4	26.4	26.4
TIRES			
Size: P275/65R18; P275/55R20	Standard; Available	NA; Standard	NA; Standard
Type: Mud-and-Snow-rated radials	Standard	Standard	Standard
Spare: full-size, mounted under body	Standard	Standard	Standard
MILEAGE ESTIMATES (mpg city/highway)⁹			
4.6L (4x2; 4x4)	14/20; 14/19	NA	NA
5.7L (4x2; 4x4)	14/18; 13/18	14/18; 13/18	14/18; 13/18

See numbered footnotes in Disclaimers section.

Features¹⁰

EXTERIOR	SR5	LIMITED	PLATINUM		SR5	LIMITED	PLATINUM
Multi-reflector halogen headlamps with auto-off feature and headlamp cleaners	S	S	S	18-in. alloy wheels with P275/65R18 tires	S	—	—
Integrated fog lamps	S	S	S	20-in. Sport alloy wheels with P275/55R20 tires	P	—	—
Chrome grille surround	S	S	S	20-in. alloy wheels with P275/55R20 tires	—	S	—
Color-keyed grille surround	P	—	—	20-in. diamond-cut-finish alloy wheels with P275/55R20 tires	—	—	S
Color-keyed power heated outside mirrors	S	—	—	Washer-linked variable intermittent windshield wipers	S	S	S
Chrome power auto-dimming heated outside mirrors with power folding feature and turn signal indicators	—	S	—	Windshield wiper de-icer	S	S	S
Chrome power auto-dimming heated outside mirrors with power folding, reverse tilt-down and memory features, turn signal indicators and puddle lamps	—	—	S	High Solar Energy-Absorbing (HSEA) tinted glass	S	S	S
Color-keyed door handles	S	—	—	Privacy glass on rear side, quarter and liftgate windows	S	S	S
Chrome door handles	—	S	S	Power liftgate with jam protection	—	S	S
Multi-Mode 4WD system with Torsen ^{®5} limited-slip center differential with locking feature	O	O	O	Color-keyed rear spoiler with LED center high-mount stop lamp	S	S	S
Engine and transfer case skid plate (transfer case 4x4 only)	S	S	S	Roof rack	S	S	S
Power tilt/slide moonroof with sunshade	S	S	S	Running boards	S	S	S
				Front and rear mudguards	S	S	S
				Tow hitch receiver and wiring harness with 4/7-pin connector ⁷	S	S	S
INTERIOR							
Three-zone automatic front and rear climate control with air filter	S	S	S	Dynamic Laser Cruise Control (DLCC) ¹⁸	—	—	S
AM/FM CD player with MP3/WMA playback capability, eight speakers, XM [®] Radio ¹¹ (includes 90-day trial subscription), auxiliary audio jack, USB ¹² port with iPod ^{®13} connectivity, hands-free phone capability and music streaming via Bluetooth ^{®14} wireless technology	S	—	—	Leather-trimmed tilt/telescopic steering wheel with audio and Bluetooth ^{®14} hands-free phone controls	S	—	—
JBL Synthesis [®] AM/FM 6-disc CD changer with MP3/WMA playback capability, 14 speakers including subwoofer, XM [®] Radio ¹¹ (includes 90-day trial subscription), auxiliary audio jack, USB ¹² port with iPod ^{®13} connectivity, hands-free phone capability and music streaming via Bluetooth ^{®14} wireless technology	—	S	—	Leather-trimmed tilt/telescopic steering wheel with audio, climate and Bluetooth ^{®14} hands-free phone controls	—	S	—
Voice-activated touch-screen DVD navigation system ¹⁵ with integrated backup camera; ¹⁶ JBL Synthesis [®] AM/FM 4-disc CD changer with MP3/WMA playback capability, 14 speakers including subwoofer, XM [®] Radio ¹¹ with XM NavTraffic ^{®15} (includes 90-day trial subscriptions), auxiliary audio jack, USB ¹² port with iPod ^{®13} connectivity, hands-free phone capability and music streaming via Bluetooth ^{®14} wireless technology	—	O	S	Leather-trimmed power tilt/telescopic steering wheel with memory, wood-grain-style trim inserts, and audio, climate and Bluetooth ^{®14} hands-free phone controls	—	—	S
Multi-Information Display with outside temperature, compass, current and average fuel consumption, and fuel range functions	S	S	S	Analog instrumentation with speedometer, tachometer, LCD odometer, twin tripmeters and fuel gauge; and airbag, seatbelt, low fuel level, door-ajar, battery, check engine, oil and brake warning lights	S	—	—
Rear-seat DVD entertainment system with 9-inch display, two wireless headphones; ¹⁷ wireless remote and rear audio system with 115V AC power outlet and RCA jacks	—	O	S	Optitron instrumentation with speedometer, tachometer, LCD odometer, twin tripmeters and fuel gauge; and airbag, seatbelt, low fuel level, door-ajar, battery, check engine, oil and brake warning lights	—	S	S
Fabric-trimmed 8-way power-adjustable driver's seat; 4-way adjustable front passenger seat	S	—	—	Multi-function remote keyless entry system	S	S	S
Leather-trimmed and heated 10-way power-adjustable driver's seat; 4-way power-adjustable front passenger seat	P	S	—	Power windows with driver and front passenger one-touch auto up/down with jam protection	S	S	S
Perforated leather-trimmed heated and ventilated 12-way power-adjustable driver's seat with power thigh and lumbar support; 4-way power-adjustable front passenger seat	—	—	S	Second- and third-row retractable sunshades	—	S	S
Fabric-trimmed 40/20/40 split, sliding, reclining, fold-flat second-row seat with one-touch access to third-row seat	S	—	—	Power sliding rear window with auto up/down and jam protection, electric defogger and intermittent wiper	S	S	S
Leather-trimmed 40/20/40 split, sliding, reclining, fold-flat second-row seat with one-touch access to third-row seat	P	S	—	Power door locks with shift-linked automatic lock/unlock feature	S	S	S
Perforated leather-trimmed second-row heated captain's chairs with multi-function center console	—	—	S	Auto-dimming rearview mirror with compass, maplights and HomeLink ^{®19} universal transceiver	—	—	S
Fabric-trimmed 60/40 split, reclining, fold-flat third-row seat	S	—	—	Auto-dimming rearview mirror with integrated backup camera monitor; ¹⁶ compass, maplights and HomeLink ^{®19} universal transceiver	P	S	—
Leather-trimmed 60/40 split, power reclining, power fold-flat third-row seat	P	S	—	Overhead console with dual storage areas and driver and front passenger maplights	S	S	S
Perforated leather-trimmed 60/40 split, power reclining, power fold-flat third-row seat	—	—	S	Multi-function center console with front and rear dual cup holders, dual 12V auxiliary power outlets, sliding covered armrest and large storage compartment	S	S	S
Stain-resistant fabric coating	S	—	—	Cargo area 12V auxiliary power outlet and grocery bag hooks	S	S	S
7-passenger seating with second-row captain's chairs	P	O	—	Dual extendable sun visors with vanity mirrors	S	—	—
Cruise control	S	S	S	Dual extendable sun visors with illuminated vanity mirrors and secondary visors	—	S	S
				16 (18 on Platinum) cup and bottle holders (total)	S	S	S
				Illuminated entry system	S	S	S
				Digital quartz clock	S	S	S
				Maplights/personal lamps	S	S	S
				Remote hood and fuel-filler door releases	S	S	S

See numbered footnotes in Disclaimers section.

Features (continued)

SAFETY AND CONVENIENCE

	SR5	LIMITED	PLATINUM		SR5	LIMITED	PLATINUM
STAR SAFETY SYSTEM™ Star Safety System™ — includes Vehicle Stability Control (VSC) ²⁰ , Traction Control (TRAC), Anti-lock Brake System (ABS), Electronic Brake-force Distribution (EBD), Brake Assist (BA) ⁶ and Smart Stop Technology (SST) ²¹	S	S	S	LATCH (Lower Anchors and Tethers for CHildren) includes lower anchors on all second-row seats and tether anchors on all second-row seats and the middle seat in the third row	S	S	S
Driver and front passenger Advanced Airbag System ²²	S	S	S	Child-protector rear door locks and power window lockout	S	S	S
Driver and front passenger seat-mounted side airbags, driver and front passenger knee airbags and all-row side curtain airbags ²² (4x2 only)	S	S	S	Front energy-absorbing crumple zone	S	S	S
Driver and front passenger seat-mounted side airbags, driver and front passenger knee airbags and all-row Roll-Sensing side Curtain Airbags (RSCA) ²² with cutoff switch ²³ (4x4 only)	S	S	S	Side-impact door beams	S	S	S
Driver and front passenger seatbelt warning sensor	S	S	S	Energy-dissipating interior trim	S	S	S
3-point seatbelts for all seating positions; driver-side Emergency Locking Retractor (ELR) and Automatic/Emergency Locking Retractor (ALR/ELR) on all passenger belts	S	S	S	Tire Pressure Monitor System (TPMS) ²⁴	S	S	S
Driver and front passenger seatbelt pretensioners with force limiters	S	S	S	Tire Pressure Monitor System (TPMS) ²⁴	S	S	S
				Daytime Running Lights (DRL) with on/off feature	S	S	S
				Anti-theft system with engine immobilizer ²⁵	S	S	S
				Front and rear parking assist sonar	—	S	S

S = Standard O = Optional — = Not Available P = Feature is available as part of an option package.

Packages and Options

SR5

Sport Package — includes 20-in. super chrome-finish alloy wheels, color-keyed grille surround and 7-passenger seating with second-row captain's chairs

Premium Package — includes leather-trimmed and heated 10-way power-adjustable driver's seat; 4-way power-adjustable front passenger seat; leather-trimmed 40/20/40 split, sliding, reclining, fold-flat second-row seat with one-touch access to third-row seat; leather-trimmed 60/40 split, power reclining, power fold-flat third-row seat; and auto-dimming rearview mirror with integrated backup camera monitor,¹⁶ compass, maplights and HomeLink^{®19} universal transceiver

LIMITED

Voice-activated touch-screen DVD navigation system¹⁵ with integrated backup camera,¹⁶ JBL Synthesis[®] AM/FM 4-disc CD changer with MP3/WMA playback capability, 14 speakers including subwoofer, XM[®] Radio¹¹ with XM NavTraffic^{®15} (includes 90-day trial subscriptions), auxiliary audio jack, USB¹² port with iPod^{®13} connectivity, hands-free phone capability and music streaming via Bluetooth^{®14} wireless technology

7-passenger seating with second-row captain's chairs

Rear-seat DVD entertainment system with 9-inch display, two wireless headphones,¹⁷ wireless remote and rear audio system with 115V AC power outlet and RCA jacks

WARRANTIES

Every Toyota Car, Truck and SUV is built to exceptional standards. And that's not idle boasting. We back it up with these Limited Warranty Coverages:

Basic: 36 months/36,000 miles (all components other than normal wear and maintenance items).

Powertrain: 60 months/60,000 miles (engine, transmission/transaxle, drive system, seatbelts and airbags).

Rust-Through: 60 months/unlimited miles (corrosion perforation of sheet metal).

Emissions: Coverages vary under Federal and California regulations. Refer to applicable *Warranty and Maintenance Guide* for details.

Accessories: For Genuine Toyota accessories purchased at the time of the new vehicle purchase, the Toyota Accessory Warranty coverage is in effect for 36 months/36,000 miles from the vehicle's in-service date, which is the same coverage as the Toyota New Vehicle Limited Warranty.

For Genuine Toyota accessories purchased after the new vehicle purchase the coverage is 12 months, regardless of mileage, from the date the accessory was installed on the vehicle, or the remainder of any applicable new vehicle warranty, whichever provides greater coverage, with the exception of car covers. Car covers are warranted for 12 months from the date of purchase and do not assume any coverage under the Toyota New Vehicle Limited Warranty.

You may be eligible for transportation assistance if it's necessary that your vehicle be kept overnight for repairs covered under warranty. Please see your authorized Toyota dealership for further details.

For complete details about Toyota's warranties, please visit www.toyota.com, refer to the applicable *Warranty and Maintenance Guide* or see your Toyota dealer.

TOYOTA CARE



ToyotaCare

Covers normal factory scheduled service. Plan is 2 years or 25K miles, whichever comes first. The new Toyota vehicle cannot be part of a rental or commercial fleet, or a livery or taxi vehicle. See plan for complete coverage details. See participating Toyota dealer for details.

DISCLAIMERS

1. Platinum models only. **2.** Extra-cost color. **3.** Not available on Platinum models. **4.** Flex Fuel Vehicles not available in every state. In states where available, all 5.7L V8 4x4 models are FFV. Flex Fuel Vehicles use E85, gasoline or a combination of both. Estimated mileage will vary. Consult your dealer for nearest E85 filling stations or see toyota.com for further details. **5.** Torsen® is a registered trademark of Zexel Torsen, Inc. **6.** Brake Assist is designed to help the driver take full advantage of the benefits of ABS. It is not a substitute for safe driving practices. Braking effectiveness also depends on proper brake-system maintenance and tire and road conditions. **7.** Before towing, confirm your vehicle and trailer are compatible, hooked up and loaded properly and that you have any necessary additional equipment. Do not exceed any Weight Ratings and follow all instructions in your *Owner's Manual*. The maximum you can tow depends on the total weight of any cargo, occupants and available equipment. Calculated with new SAE J2807 method. **8.** Cargo and load capacity limited by weight and distribution. **9.** 2011 EPA-estimated mileage. Actual mileage will vary. **10.** Toyota strives to build vehicles to match customer interest and thus they typically are built with popular options and option packages. Not all options/packages are available separately and some may not be available in all regions of the country. See toyota.com for information about options/packages commonly available in your area. If you would prefer a vehicle without any or with different options, contact your dealer to check for current availability or the possibility of placing a special order. **11.** XM services require a subscription after 90-day trial period. Subscriptions governed by XM Customer Agreement available at xmradio.com. **If you decide to continue your XM service at the end of your complimentary trial, the plan you choose will automatically renew and bill at then-current rates unless you call 1-800-967-2346 to cancel.** Fees and programming subject to change. Available only to those at least 18 years of age in the 48 contiguous United States and D.C. **12.** May not be compatible with all MP3/WMA players and like models. **13.** iPod® is a registered trademark of Apple, Inc. All rights reserved. **14.** The Bluetooth® word mark and logos are registered trademarks owned by Bluetooth SIG, Inc. and any use of such marks by Toyota is under license. Other trademarks and trade names are those of their respective owners. The Bluetooth® wireless technology phones listed on toyota.com have been tested for compatibility with Toyota vehicles. Performance will vary based on phone software version, coverage and your wireless carrier. Phones are warranted by their manufacturer, not Toyota. **15.** Availability and accuracy of the information provided by the navigation system or any XM services mentioned (if installed) are dependent upon many factors. Use common sense when relying on information provided. Services not available in every city or roadway. Periodic navigation updates available at additional cost. See your *Navigation System Owner's Manual* or contact XM for details. **16.** The backup camera does not provide a comprehensive view of the rear area of the vehicle. You should also look around outside your vehicle and use your mirrors to confirm rearward clearance. Cold weather will limit effectiveness and view may become cloudy. **17.** Headphones are for passenger use only. Do not use while operating vehicle. **18.** Dynamic Laser Cruise Control is designed to assist the driver and is not a substitute for safe and attentive driving practices. Please see your *Owner's Manual* for important instructions and cautions. **19.** HomeLink® is a registered trademark of Johnson Controls, Inc. **20.** Vehicle Stability Control (VSC) is an electronic system designed to help the driver maintain vehicle control under adverse conditions. It is not a substitute for safe driving practices. Factors including speed, road conditions and driver steering input can all affect whether VSC will be effective in preventing a loss of control. Please see your *Owner's Manual* for further details. **21.** Smart Stop Technology operates only in the event of certain simultaneous brake and gas pedal applications. When engaged, the system will reduce engine power to help the brakes bring the vehicle to a stop. Factors including speed, road conditions and driver input can all impact stopping distance. Smart Stop Technology is not a substitute for safe and attentive driving and does not guarantee instant stopping. Please see your *Owner's Manual* for further details. **22.** All the airbag (AB) systems are Supplemental Restraint Systems. All ABs (if installed) are designed to inflate only under certain conditions and in certain types of severe collisions: frontal and knee ABs typically inflate in frontal collisions; side and side curtain ABs in side collisions; Roll-Sensing Curtain ABs at a severe tilt degree, roll or lateral G-force. In all other accidents, the ABs will not inflate. To decrease the risk of injury from an inflating AB, always wear seatbelts, sit upright in the middle of the seat as far back as possible and do not lean against the door. Do not put objects in front of an AB or around the seatback. Do not use a rearward-facing child seat in any front passenger seat. The force of an inflating AB may cause serious injury or death. See your *Owner's Manual* for further information/warnings. **23.** Do not use rearward-facing child seats in any front passenger seat without switching off the passenger-side airbag. Please see your *Owner's Manual* for details. **24.** The Toyota Tire Pressure Monitor alerts the driver when tire pressure is critically low. For optimal tire wear and performance, tire pressure should be checked regularly with a gauge; do not rely solely on the monitor system. See your *Owner's Manual* for details. **25.** The engine immobilizer is a state-of-the-art anti-theft system. When you insert your key into the ignition switch, the key transmits an electronic code to the vehicle. The engine will only start if the code in the transponder chip inside the key matches the code in the vehicle's immobilizer. Because the transponder chip is embedded in the key, it can be costly to replace. If you lose a key, your Toyota dealer can help, or you can find a qualified independent locksmith to replace your key or perform high-security key services at www.aloa.org

Toyota Sequoia is designed to meet most off-road driving requirements. Abusive use may result in bodily harm or damage. Toyota encourages responsible operation to protect you, your vehicle and the environment. Seatbelts should be worn at all times. Please do not allow passengers to ride in the cargo area. Towing hitch receivers/ball mount kits are not intended to provide crash protection.

For details on vehicle specifications, standard features and available equipment in your area, contact your Toyota dealer. A vehicle with particular equipment may not be available at the dealership. Ask your Toyota dealer to help locate a specifically equipped vehicle.

All information presented herein is based on data available at the time of posting, is subject to change without notice and pertains specifically to mainland U.S.A. vehicles only. Prototypes shown. Actual production vehicles may vary.



For Toyota Mobility program details, go to www.toyota.com/mobility or call the Toyota Customer Assistance Center at 1-800-331-4331

treadlightly!
OFFICIAL PARTNER

