

TOYOTA TACOMA

OUTLINE OF NEW FEATURES

The following changes are made for the 2009 model year.

1. Exterior Color

For the '09 Toyota Tacoma, a total of 8 colors are available including 4 new colors; 1G3, 3R3, 4T3 and 6T8.

Color No.	Color Name	Note
1G3	Gray Metallic	New
3R3	Red Mica Metallic	New
4T3	Bronze Mica Metallic	New
6T8	Dark Green Mica Metallic	New
040	Super White 2	Carryover
1E7	Silver Mica Metallic	Carryover
209	Black Mica	Carryover
8P1	Blue Metallic	Carryover

2. Front View

The inner grille inside the radiator grille has been changed from black mold-in-color to gray metallic paint to improve the appearance. The headlight extensions on OFFROAD, SPORT and X-Runner models have been given a smoked coating to also improve the quality of the vehicle appearances.

3. Rear View

LEDs are used on the taillights/stop lights and rear side marker lights of the rear combination light, and a television camera for the rear view monitor system is installed on the tail gate handle.



4. Interior

- Since the shape of the energy absorbing pad inside the door trim has been changed to ensure occupant protection, the design of the front and access door trims on the Access Cab and Double Cab has been changed. Also, a door lower seal has been added to each door trim on Access Cab and Double Cab to ensure quieter operation. For details, see page 10.
- The shape of a lumbar support has been added to the back panel trim on Access Cab to improve comfort for the rear seat passengers. For details, see page 12.
- A rear console box has been provided on Access Cab to improve the ease of use. For details, see page 12.
- A chrome plated emblem has been added to the urethane steering wheel.

5. Glass

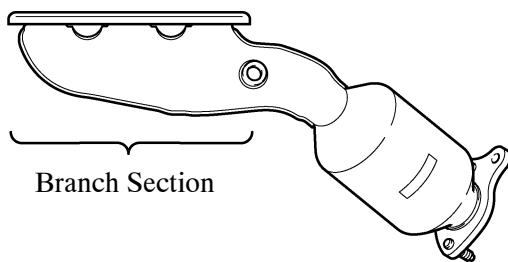
Privacy glass has been provided as a set option on the convenience package.

6. 2TR-FE Engine

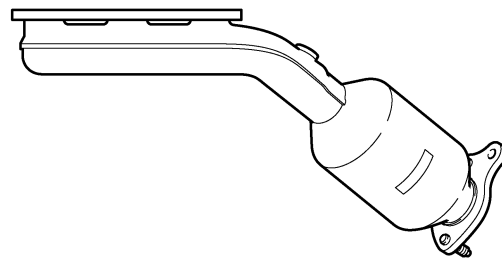
The fuel tank cap has been changed from the quick turn type to the screw type.

7. 1GR-FE Engine

- The fuel tank cap has been changed from the quick turn type to the screw type.
- The shape of the exhaust manifold branch section on the '09 Toyota Tacoma has been optimized, thereby reducing noise and vibration.



'09 Toyota Tacoma



'08 Toyota Tacoma

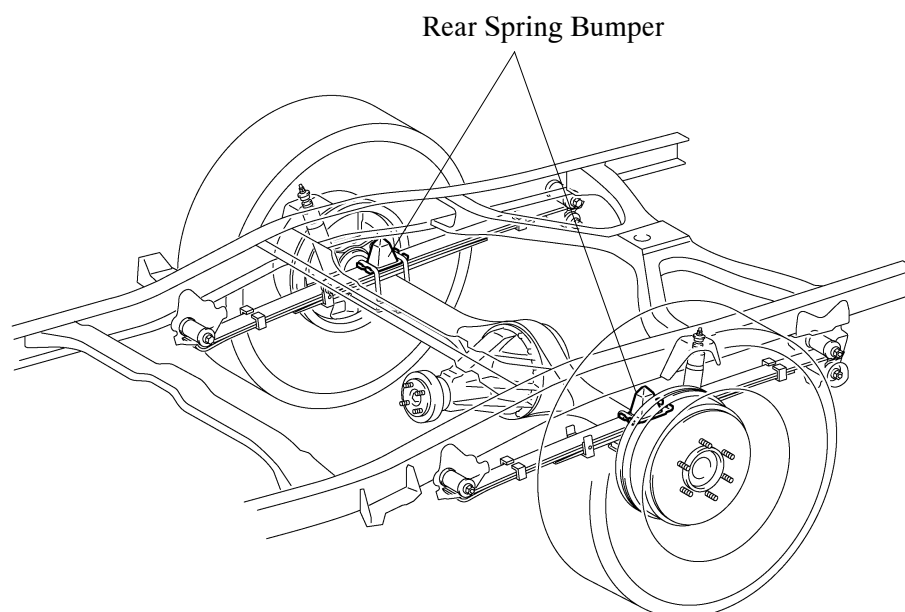
10FEG01TE

8. Differential

- The LSD rear differential has been discontinued.
- A low viscosity oil (SAE 75W-85) is used for the front and rear differentials to improve the fuel efficiency.

9. Suspension

- The characteristics of the normal and off-road shock absorbers on the 4WD and PreRunner models have been optimized to improve driving performance.
- The shape and strength of the rubber rear spring bumper used on the 4WD and PreRunner models have been optimized to improve riding comfort.



10FCH16Y

10. Brake

- The brake control system standard setting has been changed from the brake control system (ABS with EBD and Brake Assist) using a vacuum brake booster to the brake control system (ABS with EBD, Brake Assist, TRAC, VSC and Auto LSD) using a vacuum brake booster. For details, see page 13.
- An A-TRAC switch has been added to the brake control system (ABS with EBD, Brake Assist, TRAC, A-TRAC, VSC, Auto LSD, Downhill Assist Control and Hill-start Assist Control) on the hydraulic brake booster models. For details, see page 48.

11. Tire Pressure Warning System

The tire pressure warning valve and transmitter has been discontinued on the spare tire. Alternatively, an information label indicating “TEMPORARY USE ONLY” has been placed on the spare tire disc wheel.

Service Tip

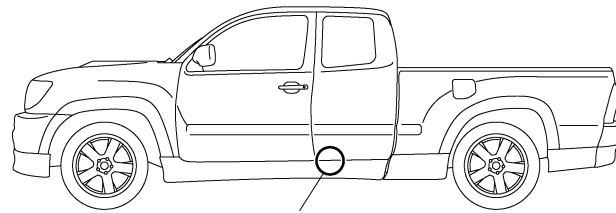
The spare tire for the '09 Toyota Tacoma is only for temporary use. Do not perform tire rotations on the spare tire.

12. Frame

Some of the frame structures, such as frame side rails and cross members, have been changed to achieve higher collision safety performance.

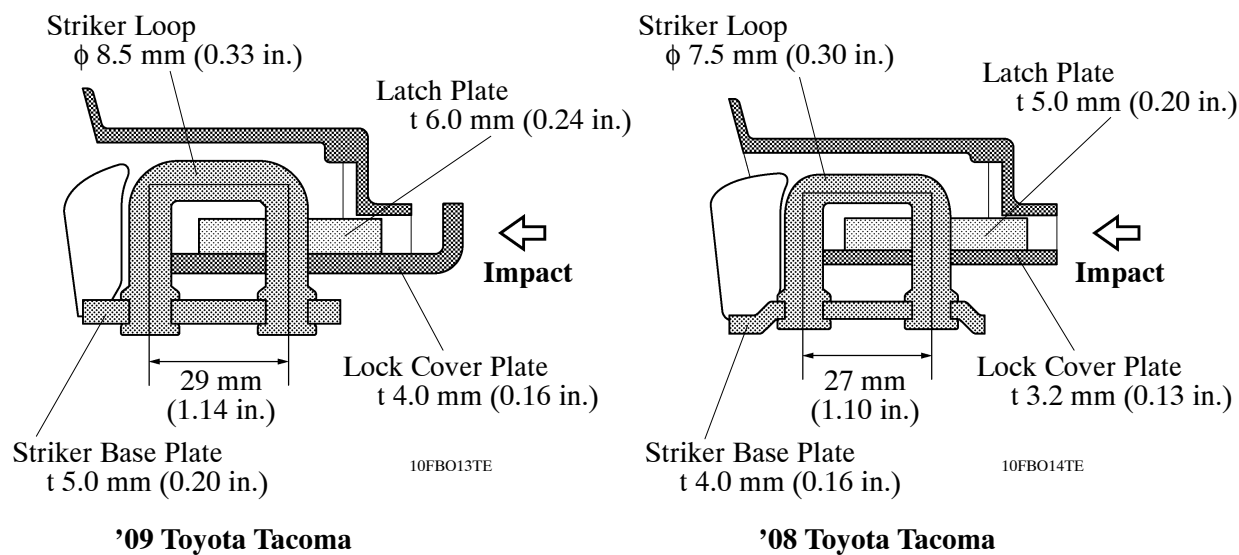
13. Door Lock

Some changes have been made to the lower door lock system of the access door on Access Cab, such as the diameter of the striker loop, thickness and shape of the striker base plate, thickness of the latch plate, and thickness and shape of the lock cover plate, to allow the door lock to further withstand collision impacts on the side of the vehicle. This can enhance occupant protection performance.



Door Lock Position

10FBO12TE



Cross-section view of striker engagement

14. Seat

- As use of the separate seat has been discontinued on Regular Cab, only the bench seat is available. For details, see page 53.
- Active headrests have been provided as standard on Access Cab and Double Cab. For details, see page 54.
- Foldable headrests have been provided as standard on the rear seat for Access Cab. In addition, a spring-type rear seat cushion is used. For details, see page 55.

15. Seat Belt

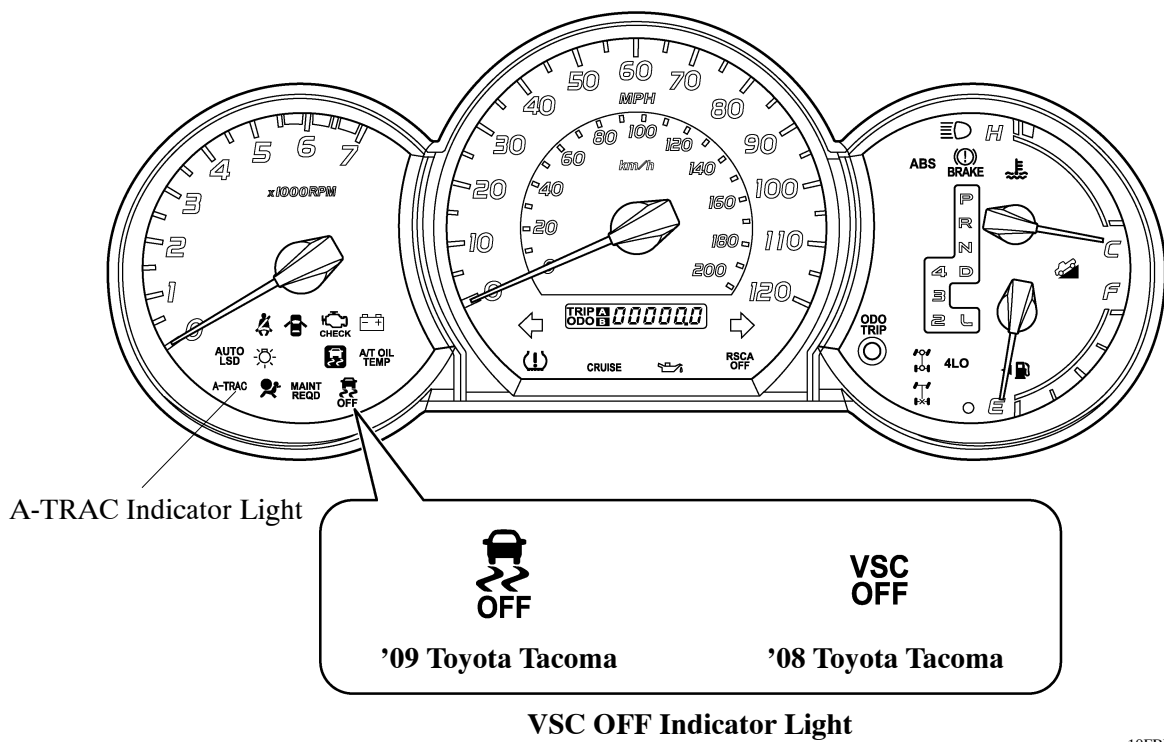
The inner belt for the rear seat has been extended 20 mm (0.8 in.) for Access Cab according to the extension of the seat cushion.

16. Lighting

LED rear combination taillights/stop lights and LED rear side marker lights are used. In addition, a smoke clear lens has been provided on the lens covers. For details, see page 56.

17. Combination Meter

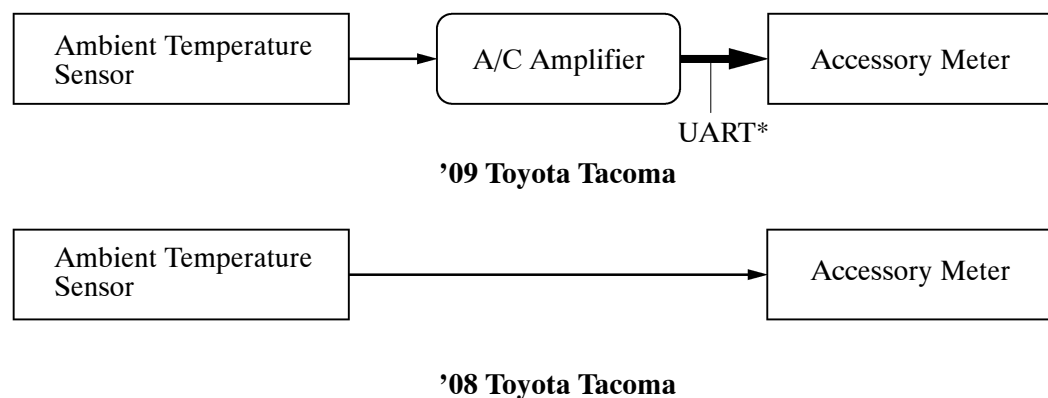
- The VSC OFF indicator light on the combination meter has been redesigned. In addition, an active circuit same as that for the '08 models is used.
- An A-TRAC indicator light has been added on the models equipped with a brake control system (ABS with EBD, Brake Assist, TRAC, A-TRAC, VSC, Auto LSD, Downhill Assist Control and Hill-start Assist Control).



18. Accessory Meter

The UART (Universal Asynchronous Receiver Transmitter) communication system is used for sending the ambient temperature sensor signals to the accessory meter via the A/C amplifier, instead of directly sending the signals to the accessory meter.

► System Diagram ◀



*: Universal Asynchronous Receiver Transmitter

19. Clock Assembly

The clock display type has been changed from VFD (Vacuum Fluorescent Display) to LCD (Liquid Crystal Display).

20. Wiper System

The wiper system with the intermittent variable function has been discontinued as an option for 2WD Regular Cab models, other than PreRunner models.

21. Air Conditioning

The Max A/C mode and defroster control logic have been added. For details, see page 57.

22. Power Window System

The power window system has been provided as standard on Access Cab and Double Cab.

23. Door Lock System

The door lock system has been provided as standard on Access Cab and Double Cab.

24. Wireless Door Lock Remote Control System

A wireless door lock buzzer has been added. For details, see page 61.

25. SRS Airbag System

- The side airbag and curtain shield airbag, which were provided only on Double Cab as an option, are used as standard on all models.
- The side airbag deployment condition has been changed on the front passenger occupant classification system.

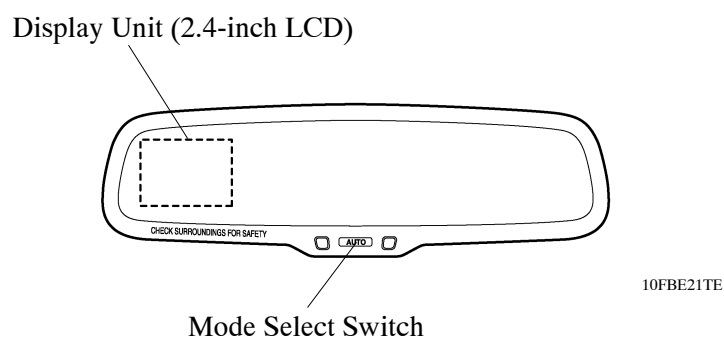
Condition detected by the front passenger occupant classification system	Side airbag on the front passenger seat	
	'09 Toyota Tacoma	'08 Toyota Tacoma
Adult	Activated	Activated
Child or child restraint system	Activated	Deactivated
Unoccupied	Activated	Deactivated
There is a malfunction in the system	Activated	Deactivated

26. Seat Belt Warning System

The flash drive circuit for the front passenger seat belt warning light was used on the clock assembly on the '08 Toyota Tacoma. However, this is used on the combination meter for the '09 Toyota Tacoma.

27. Inside Rear View Mirror

- An inside rear view mirror comprising of an automatic glare-resistance EC (Electrochromic) mirror and rear view monitor system display unit has been provided as standard equipment on X-Runner, and as an option on the 2WD Access Cab models, PreRunner models and 4WD models.
- On the '09 Toyota Tacoma, the mode select switch is used not only for operating the EC mirror but also for operating the display unit. Therefore, the AUTO mode on the EC mirror can be turned ON/OFF by pressing the mode select switch when the shift lever is in any position other than R.



28. Rear View Monitor System

A rear view monitor system including an inside rear view mirror with a display unit has been provided. For details, see page 64.

29. Audio System

- The audio system specifications and settings have been changed. For details, see page 67.
- The SDARS (Satellite Digital Audio Radio Service) is available on models with the JBL audio system. For details, see page 70.

30. Bluetooth Hands-free System

The Bluetooth hands-free system has been provided as an option on Double Cab, as a set with the JBL audio system. For details, see page 72.