

2020 Avalon



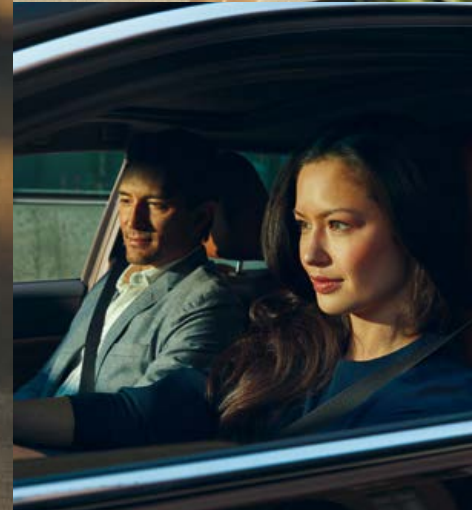
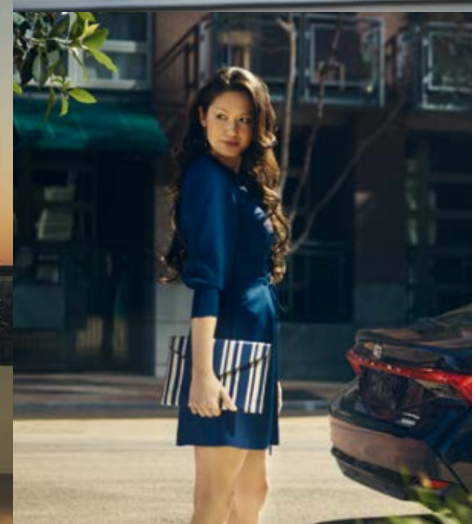
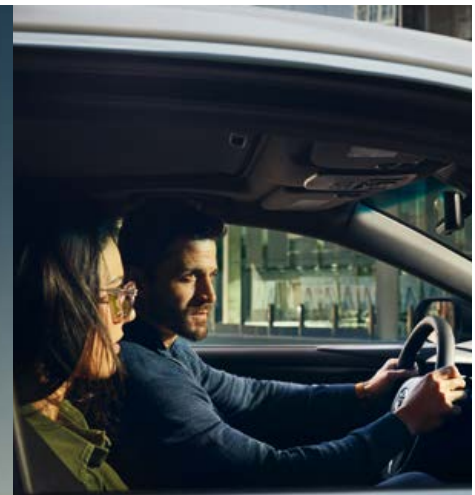
Give every day new meaning.

From here on out, every mile is what you make of it. Follow your aspirations in the 2020 Toyota Avalon, and never look back. Its low, wide stance and flowing roofline give it a sleek silhouette, while strong character lines add definition to its shape. Create an undeniable presence wherever you go with its available signature LED headlights and taillights that feature dynamic auxiliary turn signaling and display a laser-etched design with precise detailing. It's a new level of refinement, and it's ready to face tomorrow head-on.



Left to right: **Touring** shown in Wind Chill Pearl⁶⁴ with available Advanced Safety Package. **Hybrid Limited** shown in Opulent Amber with available Advanced Safety Package.

See numbered footnotes in Disclosures section.



TRD

Three letters. Endless dedication.

At Toyota Racing Development (TRD), we've been helping performance enthusiasts extract more performance from their Toyotas since 1979, and we have no intention of slowing down. Now we've turned our TRD engineers loose on Avalon, improving handling, performance and styling. Aerodynamic elements, from the front splitter and the side aero skirts to the rear diffuser and spoiler, boost Avalon TRD's aggressive look and help improve high-speed stability.



TRD shown in Supersonic Red.⁶⁴

See numbered footnotes in Disclosures section.



TRD PURPOSEFUL STANCE

Avalon TRD takes handling and striking design even further. TRD-tuned shocks improve body control, handling agility and steering precision. Thicker underbody braces increase torsional rigidity. And its unique coil springs not only drop the vehicle .60 inches for a lower center of gravity; they also enhance the aero kit for an unmistakably menacing look.

TRD CAT-BACK DUAL EXHAUST

Press the start button, hit the gas and enjoy the aggressive sound of Avalon TRD's cat-back dual exhaust. Specially tuned to reduce back pressure, this system helps optimize efficiency and power. Polished stainless steel TRD exhaust tips punctuate its athletic look.



UNIQUE TRD 19-IN. ALLOY WHEELS WITH RED-PAINTED BRAKE CALIPERS

Looks that perform. Matte-black alloy wheels on Avalon TRD not only look good; they also reduce weight and improve steering responsiveness compared with other Avalon grades. Large 12.9-in.-diameter front rotors and red-painted dual-piston front calipers give you more stopping power for every twist and turn.





TRD COCKPIT

Performance you can see and feel. Black/Red heated sport SofTex[®]-trimmed³³ front seats with Ultrasuede[®]³⁴ trim inserts welcome you in, while red accents throughout will remind you of the dedication that goes into every vehicle. From the TRD embroidered headrests to the seatbelts and stitching on the steering wheel, red is used to highlight its sporty interior.

TRD interior shown in Black/Red SofTex[®]³³ and Ultrasuede[®]³⁴ trim with available Premium Audio with Dynamic Navigation²⁴ and JBL[®] with Clari-Fi[®]²⁵

See numbered footnotes in Disclosures section.

Purpose meets performance.

Avalon has been designed to be smarter and more rewarding. By taking advantage of the Toyota New Global Architecture (TNGA) platform, engineers have been able to deliver a higher level of both handling and ride comfort. The low, wide and long platform gives you confidence in every turn while connecting you further through the available steering-wheel-mounted paddle shifters. Inside, the inherent space of the cabin gives it the exceptional rear shoulder, knee and head room you've come to expect from Toyota's flagship sedan.



3.5L V6 ENGINE

Feel a rush with every step on the pedal. The 3.5-liter V6 engine unleashes 301 hp while still maintaining efficiency, with an impressive EPA-estimated 31 hwy mpg.⁶³ Equipped with the latest technology, like Variable Valve Timing-intelligent Wide (VVT-iW) and D-4S direct-injection paired with a smooth Direct Shift 8-speed transmission, Avalon can deliver whenever you feel the urge.



SPORT AND SPORT+ MODES

Press Sport Mode to indulge your spirited side and the available Sport+ Mode to unleash Avalon Touring's full driving potential. These modes change the driving characteristics by responding in a more dynamic way. Touring's Adaptive Variable Suspension (AVS) provides virtually instantaneous damping adjustments to help maximize handling and stability on every road.



SPORT-EXCLUSIVE SOUND

Found on Avalon Touring and available on XSE, Engine Sound Enhancement (ESE) bumps up the engine's voice through the vehicle's audio system. The Intake Sound Generator (ISG) and sport exhaust will also produce an aggressive note during acceleration. For those times you want to just cruise quietly around town, Active Noise Control (ANC) sends noise-canceling sound waves into the cabin to filter out unwanted sound.

PERFORMANCE



PADDLE SHIFTERS

When the drive takes a spirited turn, Avalon's available steering-wheel-mounted paddle shifters give you the power to shift gears manually for a more controlled and responsive feel.

Touring interior shown in Black SofTex^{®33} and Ultrasuede^{®34} trim with genuine stitching.

See numbered footnotes in Disclosures section.

Designed to move you.

The provocative styling of Avalon artfully blends function and form. Every crease, every angle, every line is designed to make you feel something, to get you motivated and to help you forge your own path. Take advantage of a powerful full-size sedan, and do more than stand out from the crowd — lead the way.



AERODYNAMICS

Move effortlessly. Avalon features tangential vents on the sides of its front bumper, a rear diffuser, underbody panels and an available rear spoiler — all to help shave its coefficient of drag to 0.27, increase fuel efficiency and improve vehicle quietness.

Touring shown in Wind Chill Pearl⁶⁴ with available Advanced Safety Package.

See numbered footnotes in Disclosures section.



Touring shown in Wind' Chill Pearl⁶⁴ with available Advanced Safety Package.

See numbered footnotes in Disclosures section.

Daring in every detail.

Standing out with a style of its own, Avalon Touring adds to the dynamic look of the exterior with piano-black accents. From the sport mesh front grille all the way to the rear diffuser, subtle contrasts in color leave you with a clean, modern look while hinting at its aggressive side.



STANDARD REAR SPOILER

The piano-black rear spoiler on Avalon Touring adds to its sporty look while also reducing lift by disrupting the air that flows over it.

STANDARD QUAD EXHAUST TIPS

Beneath the rear bumper, a dual exhaust with quad chrome tips, along with a rear diffuser, gives Avalon Touring a powerful look. Start the engine in Sport Mode and hear the inspiring sound of a specially tuned dual sport exhaust system letting you know it's ready to perform.



DESIGN

19-IN. SPORT WHEELS

Take on corners in style. Avalon Touring's 3-D machined and gloss-black-finished 19-in. wheels have been manufactured with depth and precision to complement its distinctive design.

Touring shown in Wind Chill Pearl⁶⁴ with available Advanced Safety Package.

See numbered footnotes in Disclosures section.



INTERIOR



AVALON TOURING INTERIOR

Inside, the sleek look of Avalon Touring continues. From its leather-wrapped steering wheel, to the Ultrasuede^{®34} material found on the seat surfaces and door panels, to the real aluminum trim, you'll appreciate the dedication that goes into every detail. And with its advanced Engine Sound Enhancement, it's quality you can hear, feel and see in every drive.

Touring interior shown in Black SofTex^{®33} and Ultrasuede^{®34} trim with genuine stitching and available Advanced Safety Package.

See numbered footnotes in Disclosures section.

Smart technology that keeps up with you.

Discover more control at your fingertips. Avalon is filled with an array of seamless multimedia features, such as *Bluetooth*⁶⁶ connectivity, Amazon Alexa⁸ compatibility and advanced voice recognition²⁷ — allowing you to bring all the best technology with you, no matter where you go. What's more, smartwatch connectivity⁶⁵ allows you to stay in touch with Avalon even while you're away. Let's pursue more and enjoy more of what your adventures have to offer.



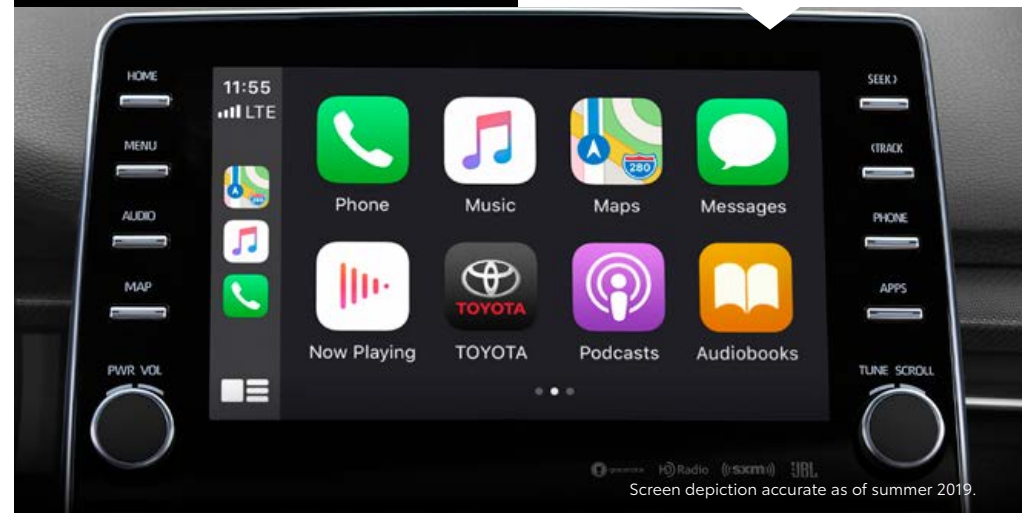
Apple Watch⁶⁶ shown.

WEARABLE CONNECTIVITY

Enhanced available Toyota Remote Connect²⁰ gives you amazing control of Avalon, all from your Apple Watch⁶⁶ or compatible smartwatch.⁶⁵ Through touch or voice commands, you can locate your vehicle, lock or unlock the doors, or even start the engine.

APPLE CARPLAY⁹⁷

Bring along a familiar face. With Apple CarPlay⁹⁷ compatibility, you can use your compatible iPhone⁶⁴ with Avalon's audio multimedia system to get directions, make calls, send and receive messages, and listen to music, while staying focused on your commute.



INTERIOR



AVALON LIMITED INTERIOR

The craftsmanship inside Avalon Limited will make you never want to leave. Authentic materials, such as real wood trim and available Cognac leather-trimmed seat surfaces, highlight the uncomplicated interior, while the supportive seats display a unique perforation pattern and two-tone quilted stitching that raise its premium feel. Even road noise has been suppressed, for a quieter cabin during every drive.

Hybrid Limited interior shown in available premium perforated Cognac leather trim with genuine stitching and available Advanced Safety Package.

Intensify every moment.

Loaded with a wealth of state-of-the-art technology, Avalon will take your day-to-day drives to the next level. Thoughtful features include an available 10-in. color Head-Up Display (HUD) that's projected onto the windshield for a distraction-free view of vehicle speed, turn-by-turn directions, and more. Advanced technology is present even in the things you can't see. The crisp sound of an available 14-speaker JBL®⁶⁷ Audio system, the convenience of Wi-Fi²² capability and the comfort of available heated and ventilated front seats all help take you beyond your expectations.



JBL®⁶⁷ AUDIO SYSTEM

Experience the sound of luxury through Avalon's available JBL® w/Clari-Fi®²⁵ audio system. With its 1200 watts, 14 speakers, 7.1-channel surround sound, and high-quality hardware, software and structural engineering, phenomenal sound is delivered to amp up every drive.



QI WIRELESS CHARGING³⁰

No wires? No worries. Avalon features available Qi-compatible wireless smartphone charging. Simply place your Qi-compatible device underneath the center stack's nonslip surface to easily charge it up. For more convenience, four USB 2.0 ports³ let anyone find a connection from any seat.



MULTI-INFORMATION DISPLAY

Get all the vital info you need at a glance. Avalon's 7-in. Multi-Information Display (MID) in the instrument cluster is easy to use and shows safety info and alerts, your current mpg, turn-by-turn directions, and more — all on one display.

LIMITED INTERIOR



Hybrid Limited interior shown in available premium perforated Cognac leather trim with genuine stitching and available Advanced Safety Package.



AVALON LIMITED SEATS

Avalon Limited raises its premium feel inside. Both the front and the rear seats display a unique perforation pattern, while high-end quilted two-tone stitching flows from the door panels to the seats.

REAL WOOD TRIM

Adding more warmth and luxury to Avalon Limited is the use of real wood. Running across the dash and door panels, it highlights the quality that goes into this flagship vehicle.



LIMITED EXTERIOR



PREMIUM GRILLE

Avalon Hybrid's unmistakable front grille infuses intelligence with style. Its integrated grille shutter automatically opens and closes to help optimize the amount of air flowing in, for better aerodynamics and engine operation efficiency.

Hybrid Limited shown in Opulent Amber with available Advanced Safety Package.



18-IN. ALLOY WHEELS

Sleek in design and inherently efficient, Avalon Hybrid offers available 18-in. super-chrome aluminum alloy wheels that complement its sophisticated looks.

Driven for more.

Avalon Limited makes a statement wherever you go. Whether it's equipped with the powerful 3.5-liter V6 or the 2.5-liter Dynamic Force Engine and hybrid system, you'll be surprised how far you can go. Avalon Hybrid helps maximize fuel efficiency in ECO Mode, or can run entirely on the electric motors, under certain conditions, to help reduce noise and emissions when switched to EV Mode.³⁶ From its compact battery and lightweight power control unit to its auto-glide control that promotes efficient coasting, Avalon Hybrid has an impressive EPA-estimated mpg of up to 44 hwy⁶⁸ and amplified fun.



Hybrid Limited shown in Opulent Amber with available Advanced Safety Package.

See numbered footnotes in Disclosures section.

SAFETY

INTELLIGENT CLEARANCE SONAR⁵⁶ AND REAR CROSS-TRAFFIC BRAKING⁵⁷

Be more aware of your surroundings. Avalon's available Intelligent Clearance Sonar (ICS) warns you both audibly and visually when it detects nearby pedestrians or vehicles. Under certain low-speed conditions, Rear Cross-Traffic Braking (RCTB) is designed to reduce engine power and apply the brakes if necessary.



Left to right: **Touring** shown in Wind Chill Pearl⁶⁴ with available Advanced Safety Package.
Hybrid Limited shown in Opulent Amber with available Advanced Safety Package. Simulation shown.

See numbered footnotes in Disclosures section.

Reduce the element of surprise.

Safety is at Avalon's core. A comprehensive suite of six advanced safety features is designed to help keep you out of harm's way. This system includes Enhanced Vehicle Stability Control (VSC)⁴⁴, Traction Control (TRAC), Anti-lock Brake System (ABS), Electronic Brake-force Distribution (EBD), Brake Assist (BA)⁴⁵ and Smart Stop Technology® (SST)⁴⁶ — all standard on every new Avalon.



ADAPTIVE CORNERING LIGHTS

Light up the road ahead with full LED headlights and shed more light with available adaptive cornering lights. When you're turning the steering wheel or signaling a lane change, the corresponding cornering light will turn on to help you see better at intersections. And when you're in Reverse, they will also illuminate to enhance your visibility when parking.



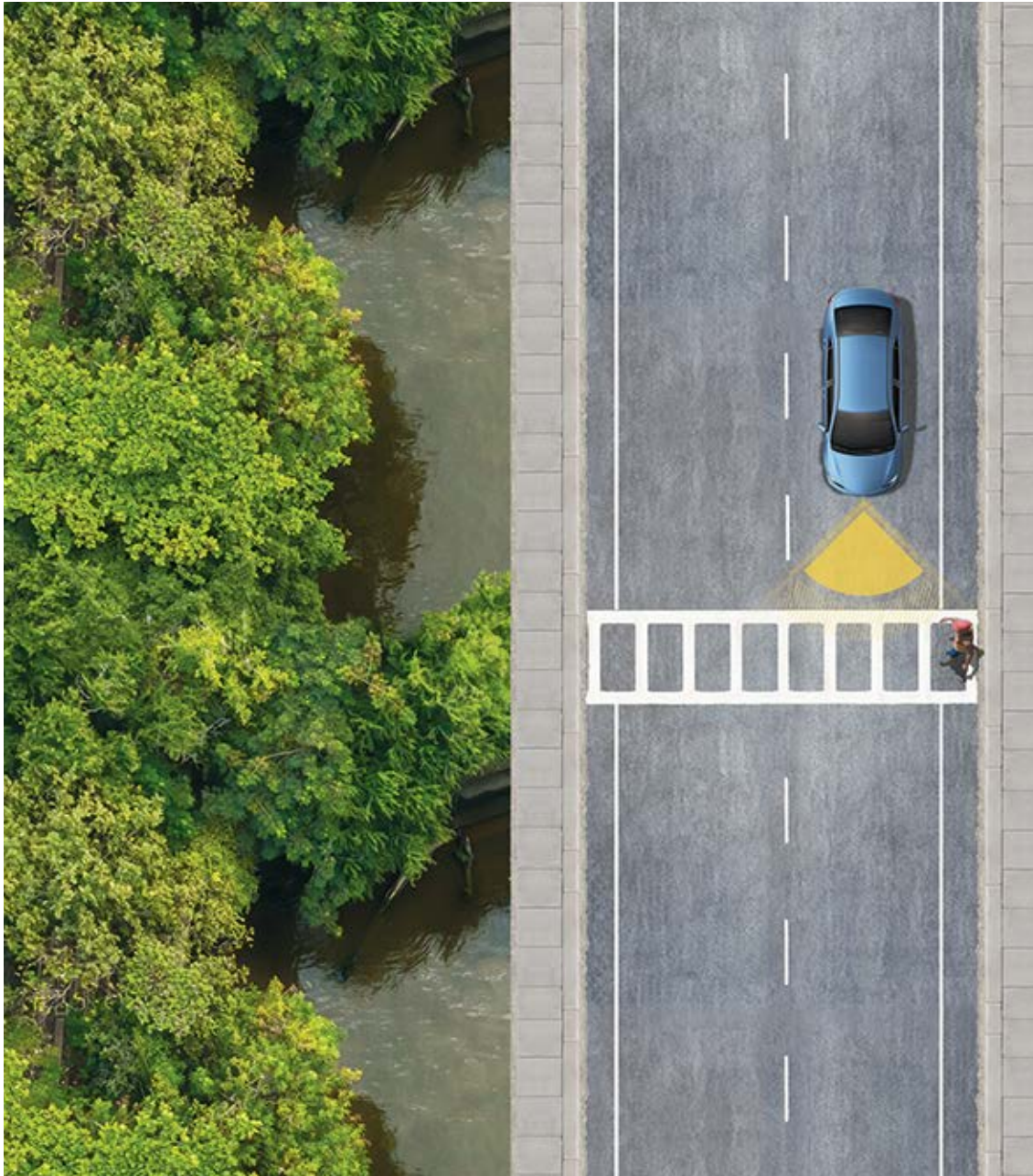
BIRD'S EYE VIEW CAMERA³⁷ WITH PERIMETER SCAN

Avalon's available Bird's Eye View Camera with Perimeter Scan uses front-, side- and rear-mounted cameras to display a composite view as seen from above.



BLIND SPOT MONITOR² WITH REAR CROSS-TRAFFIC ALERT⁵⁵

The Blind Spot Monitor (BSM) is designed to warn you when a vehicle in the next lane enters Avalon's blind spot on either side of the vehicle. When you're in Reverse, Rear Cross-Traffic Alert (RCTA) helps detect vehicles approaching from either side, warning you with side mirror indicators and a warning tone. When Avalon is equipped with the available Bird's Eye View Camera,³⁷ visual alerts are also shown on the multimedia display.



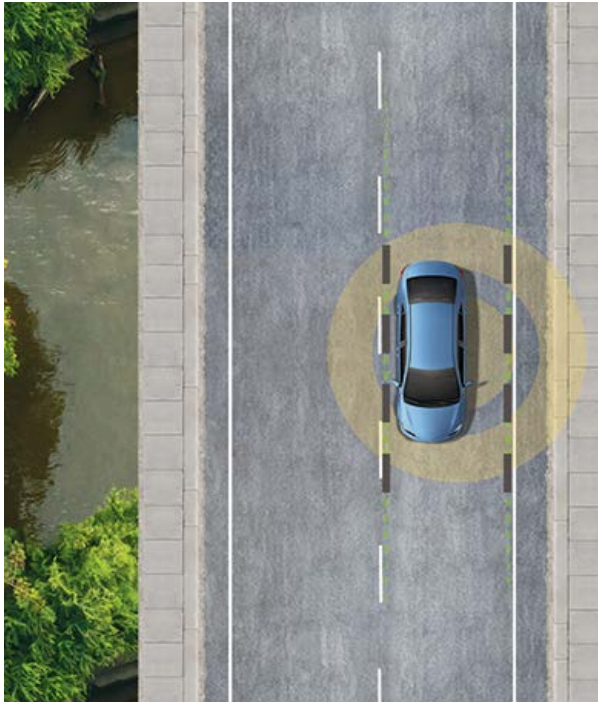
Putting a premium on your safety.

Avalon's standard Toyota Safety Sense™ P (TSS-P)⁵¹ is a suite of active safety features that are designed to help protect you from potential danger and, in the event of an accident, reduce the extent of the damage. TSS-P's comprehensive features use radar and a camera, as well as vehicle controls, to help keep you safe under certain circumstances.



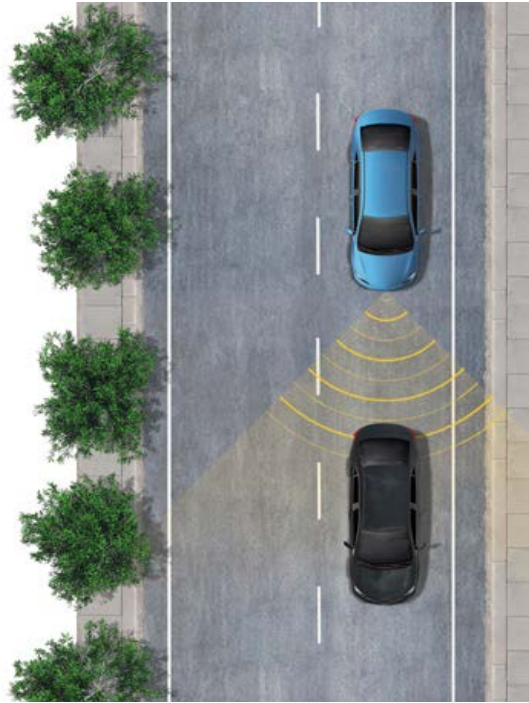
PRE-COLLISION SYSTEM WITH PEDESTRIAN DETECTION (PCS W/PD)⁵²

Pre-Collision System with Pedestrian Detection (PCS w/PD) is designed to help keep the road safe by detecting a vehicle or a pedestrian in certain situations. By combining millimeter-wave radar with a camera capable of shape recognition, the system provides an audio/visual alert, warning you of a possible collision under certain circumstances. If you don't react, the system is designed for automatic braking support to help mitigate the potential for a collision.



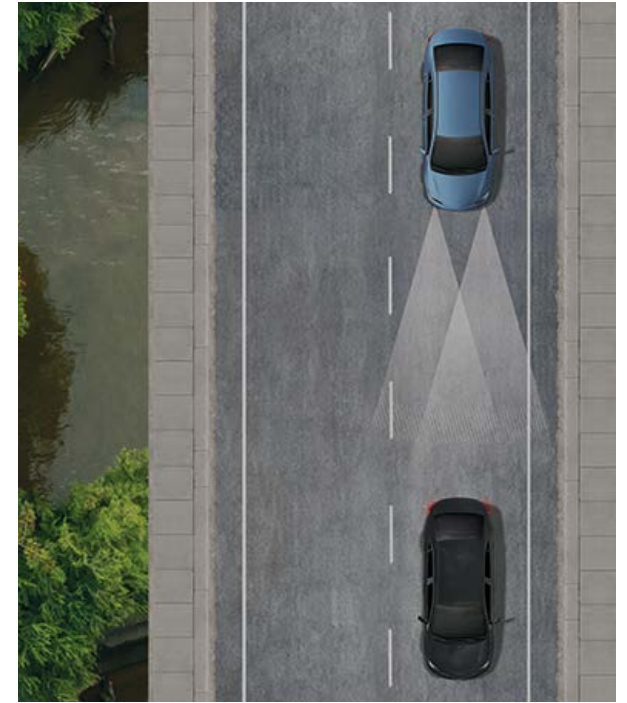
LANE DEPARTURE ALERT WITH STEERING ASSIST (LDA w/SA)⁵³

Under certain circumstances, Lane Departure Alert (LDA) with Steering Assist (LDA w/SA) is designed to help detect lane departure on roads with visible lane markings. LDA only activates when you're traveling at a speed of 32 mph or faster. When you hear and see the alert, after carefully checking the road around you, safely direct your vehicle back to the center of your lane. In addition, if the system senses that you're unintentionally drifting, it may automatically make small corrective steering inputs to help keep your vehicle in its lane.



FULL-SPEED RANGE DYNAMIC RADAR CRUISE CONTROL (DRCC)³⁵

Intended for highway use and similar to "constant speed" cruise control, available Full-Speed Range Dynamic Radar Cruise Control (DRCC) lets you drive at a preset speed. DRCC uses vehicle-to-vehicle distance control, which is designed to adjust your speed, to help you maintain a preset distance from the vehicle ahead of you that is driving at a slower speed. DRCC uses a front-grille-mounted radar and an in-vehicle camera designed to detect vehicles and their distance. If a driver is traveling slower than you, or within your preset range, DRCC is designed to automatically slow your vehicle down without deactivating cruise control. If DRCC determines you need to slow down more, an audio and visual alert notifies you and brakes may be applied. When there's no longer a vehicle driving slower than your preset speed in front of you, DRCC will then accelerate to the preset speed and regular cruise control will resume.



AUTOMATIC HIGH BEAMS (AHB)⁵⁴

The Automatic High Beams (AHB) feature is a safety system designed to help you see more clearly at night — without distracting other drivers. Designed to activate at speeds above 25 mph, AHB relies on an in-vehicle camera to help detect the headlights of oncoming vehicles and taillights of preceding vehicles, then automatically toggles between high and low beams accordingly to provide the appropriate amount of light. By using high beams more frequently, the system may allow for earlier detection of pedestrians and obstacles.



XLE

Powertrain

- 3.5-Liter V6 with 301 hp @ 6600 rpm
- 22 city/32 hwy/26 combined est. mpg⁶⁹
- Direct Shift-8AT (8-Speed Electronically Controlled automatic Transmission)

Exterior Features

- LED reflector headlights and LED Daytime Running Lights (DRL)
- Front chrome grille surround with dark gray insert
- Color-keyed heated power outside mirrors with turn signal and blind spot warning² indicators
- 17-in. silver-painted alloy wheels with P215/55R17 tires
- Dual exhaust with chrome tips

Interior Features

- Dual zone automatic climate control with air filter and rear-seat vents
- Audio Plus with Apple CarPlay^{®7} and Scout[®] GPS Link⁹ compatible, and Connected Services¹⁵
- Integrated backup camera³¹ with dynamic gridlines
- 7-in. TFT Multi-Information Display (MID)
- SofTex[®]-trimmed³³ heated front seats
- 60/40 split, folding rear seats with two adjustable and one fixed headrest, armrest with cup holders
- 3-mode switch (ECO, Normal, Sport)
- Smart Key System³⁹ on front doors and trunk with Push Button Start
- Four USB 2.0 charge ports³
- One USB media port³

Safety/Convenience

- Star Safety SystemTM
- Ten airbags⁴⁷
- Toyota Safety SenseTM P (TSS-P)⁵¹ — Pre-Collision System with Pedestrian Detection (PCS w/PD)⁵² Lane Departure Alert with Steering Assist (LDA w/SA)⁵³ Automatic High Beams (AHB)⁵⁴ and Full-Speed Range Dynamic Radar Cruise Control (DRCC)³⁵
- Safety Connect^{®16} — includes Emergency Assistance, Stolen Vehicle Locator,⁴⁹ Roadside Assistance⁵⁰ and Automatic Collision Notification. Available by subscription. 3-year trial subscription¹⁷
- Blind Spot Monitor (BSM)² with Rear Cross-Traffic Alert (RCTA)⁵⁵
- ToyotaCare⁶⁰ featuring a no cost maintenance plan with roadside assistance⁶⁰

Options and Packages

- JBL^{®67} Audio Upgrade — includes Premium Audio and JBL[®] w/Clari-Fi^{®25} with 14 speakers
- Moonroof Package — includes power tilt/slide moonroof with sliding sunshade, Qi-compatible wireless smartphone charging³⁰



XSE

Adds to or replaces features offered on XLE

Powertrain

- 3.5-Liter V6 with 301 hp @ 6600 rpm
- 22 city/31 hwy/25 combined est. mpg⁶³
- Direct Shift-8AT (8-Speed Electronically Controlled automatic Transmission)

Exterior Features

- Sport-tuned suspension
- Power tilt/slide moonroof
- LED reflector headlights with smoked chrome bezels and on/off feature; LED Daytime Running Lights (DRL) with auto on/off feature
- Front piano-black grille with sport mesh insert
- Piano-black heated power outside mirrors, turn signal and blind spot warning² indicators
- 19-in. black-painted machined-finish alloy wheels with P235/40R19 tires
- Piano-black rear spoiler
- Dual exhaust with quad chrome tips

Interior Features

- Intake Sound Generator (ISG)
- SofTex[®]-trimmed³³ seats w/perforation and Ultrasuede[®]-trimmed³⁴ heated front seats
- Tilt/telescopic premium leather-wrapped steering wheel, Multi-Information Display (MID), paddle shifters, audio, Bluetooth^{®6} hands-free phone and voice-command controls
- Genuine aluminum interior trim
- Aluminum pedal covers
- Frameless auto-dimming rearview mirror with compass and HomeLink^{®40} universal transceiver

Safety/Convenience

- Star Safety SystemTM
- Ten airbags⁴⁷
- Toyota Safety SenseTM P (TSS-P)⁵¹ — Pre-Collision System with Pedestrian Detection (PCS w/PD)⁵² Lane Departure Alert with Steering Assist (LDA w/SA)⁵³ Automatic High Beams (AHB)⁵⁴ and Full-Speed Range Dynamic Radar Cruise Control (DRCC)³⁵
- Safety Connect^{®16} — includes Emergency Assistance, Stolen Vehicle Locator,⁴⁹ Roadside Assistance⁵⁰ and Automatic Collision Notification. Available by subscription. 3-year trial subscription¹⁷
- Blind Spot Monitor (BSM)² with Rear Cross-Traffic Alert (RCTA)⁵⁵
- ToyotaCare⁶⁰ featuring a no cost maintenance plan with roadside assistance⁶⁰

Options and Packages

- JBL^{®67} Audio Upgrade — includes Premium Audio and JBL[®] w/Clari-Fi^{®25} with 14 speakers plus Engine Sound Enhancement (ESE) with Active Noise Control (ANC) and sport sound-tuned exhaust



Touring

Adds to or replaces features offered on XSE

Powertrain

- 3.5-Liter V6 with 301 hp @ 6600 rpm
- 22 city/31 hwy/25 combined est. mpg⁶³
- Direct Shift-8AT (8-Speed Electronically Controlled automatic Transmission)

Exterior Features

- Adaptive Variable Suspension (AVS) system
- LED headlights with smoked chrome bezels and on/off feature; fully integrated LED Daytime Running Lights (DRL) with auto on/off feature and laser-ablation design with dynamic auxiliary turn signals
- LED taillights with laser-ablation design and dynamic auxiliary turn signals
- Piano-black heated power outside mirrors, turn signal and blind spot warning² indicators, memory features and driver's-side auto-dimming
- Sport sound-tuned exhaust

Interior Features

- Premium Audio with JBL[®] w/Clari-Fi^{®25} and Dynamic Navigation²⁴ — includes 14 speakers including subwoofer and 1200W amplifier
- Active Noise Control (ANC)
- Engine Sound Enhancement (ESE)
- 8-way adjustable driver's seat with 4-way power lumbar support; 8-way adjustable passenger seats with 4-way power lumbar support
- Heated and ventilated front seats
- Heated rear seats
- Heated tilt/telescopic premium leather-wrapped steering wheel
- 4-mode switch (ECO, Normal/Custom, Sport, Sport+)
- 10-in. color Head-Up Display (HUD) with customizable settings
- Ambient lighting for cup holders, side of console and door handles

Safety/Convenience

- Star Safety SystemTM
- Ten airbags⁴⁷
- Toyota Safety SenseTM P (TSS-P)⁵¹ — Pre-Collision System with Pedestrian Detection (PCS w/PD)⁵² Lane Departure Alert with Steering Assist (LDA w/SA)⁵³ Automatic High Beams (AHB)⁵⁴ and Full-Speed Range Dynamic Radar Cruise Control (DRCC)³⁵
- Safety Connect^{®16} — includes Emergency Assistance, Stolen Vehicle Locator,⁴⁹ Roadside Assistance⁵⁰ and Automatic Collision Notification. Available by subscription. 3-year trial subscription¹⁷
- Blind Spot Monitor (BSM)² with Rear Cross-Traffic Alert (RCTA)⁵⁵
- ToyotaCare⁶⁰ featuring a no cost maintenance plan with roadside assistance⁶⁰

Options and Packages

- Advanced Safety Package — includes Bird's Eye View Camera³⁷ with Perimeter Scan, Intelligent Clearance Sonar (ICS)⁵⁶ and Rear Cross-Traffic Braking (RCTB)⁵⁷



Limited

Adds to or replaces features offered on XLE

Powertrain

- 3.5-Liter V6 with 301 hp @ 6600 rpm
- 22 city/31 hwy/25 combined est. mpg⁶³
- Direct Shift-8AT (8-Speed Electronically Controlled automatic Transmission)

Exterior Features

- LED headlights with smoked chrome bezels and on/off feature; fully integrated LED Daytime Running Lights (DRL) with auto on/off feature and laser-ablation design with dynamic auxiliary turn signals
- LED taillights with laser-ablation design and dynamic auxiliary turn signals
- Color-keyed heated power outside mirrors, turn signal and blind spot warning² indicators, memory features and driver's-side auto-dimming
- 18-in. super-chrome alloy wheels with P235/45R18 tires
- Power tilt/slide moonroof

Interior Features

- Premium Audio with JBL® w/Clari-Fi^{®25} and Dynamic Navigation²⁴ — includes 14 speakers including subwoofer and 1200W amplifier
- Premium leather-trimmed heated and ventilated front seats
- Heated rear seats
- Heated tilt/telescopic premium leather-wrapped steering wheel
- 10-in. color Head-Up Display (HUD) with customizable settings
- Genuine wood interior trim
- Ambient lighting for cup holders, side of console and door handles
- Frameless auto-dimming rearview mirror with compass and HomeLink^{®40} universal transceiver

Safety/Convenience

- Star Safety System™
- Ten airbags⁴⁷
- Toyota Safety Sense™ P (TSS-P)⁵¹ — Pre-Collision System with Pedestrian Detection (PCS w/PD)⁵² Lane Departure Alert with Steering Assist (LDA w/SA)⁵³ Automatic High Beams (AHB)⁵⁴ and Full-Speed Range Dynamic Radar Cruise Control (DRCC)³⁵
- Safety Connect^{®16} — includes Emergency Assistance, Stolen Vehicle Locator,⁴⁹ Roadside Assistance⁵⁰ and Automatic Collision Notification. Available by subscription. 3-year trial subscription¹⁷
- Blind Spot Monitor (BSM)² with Rear Cross-Traffic Alert (RCTA)⁵⁵
- ToyotaCare⁶⁰ featuring a no cost maintenance plan with roadside assistance⁶⁰

Options and Packages

- Advanced Safety Package — includes Bird's Eye View Camera³⁷ with Perimeter Scan, Intelligent Clearance Sonar (ICS)⁵⁶ and Rear Cross-Traffic Braking (RCTB)⁵⁷



Hybrid XLE

Powertrain

- Hybrid: 2.5-Liter Dynamic Force 4-Cylinder Engine
- Hybrid system net power: 215 net hp (160 kW)
- 43 city/44 hwy/44 combined est. mpg⁶⁸
- Electronically controlled Continuously Variable Transmission (ECVT)

Exterior Features

- LED reflector headlights and LED Daytime Running Lights (DRL)
- Front chrome grille surround with dark gray insert and active grille shutter
- 17-in. silver-painted alloy wheels with P215/55R17 tires
- Single hidden exhaust

Interior Features

- Dual zone automatic climate control with air filter, electric compressor, humidity sensor and rear-seat vents
- Audio Plus with Apple CarPlay^{®7} and Scout[®] GPS Link⁹ compatible, and Connected Services¹⁵
- Integrated backup camera³¹ with dynamic gridlines
- 7-in. TFT Multi-Information Display (MID) with customizable settings
- SofTex[®]-trimmed³³ heated front seats
- 60/40 split, folding rear seats with two adjustable and one fixed headrest, armrest with cup holders
- 4-mode switch (EV;³⁶ ECO, Normal, Sport)
- Smart Key System³⁹ on front doors and trunk with Push Button Start
- Four USB 2.0 charge ports³
- One USB media port³

Safety/Convenience

- Collision sensors: deactivate high-voltage battery
- Star Safety System™
- Ten airbags⁴⁷
- Toyota Safety Sense™ P (TSS-P)⁵¹ — Pre-Collision System with Pedestrian Detection (PCS w/PD)⁵² Lane Departure Alert with Steering Assist (LDA w/SA)⁵³ Automatic High Beams (AHB)⁵⁴ and Full-Speed Range Dynamic Radar Cruise Control (DRCC)³⁵
- Safety Connect^{®16} — includes Emergency Assistance, Stolen Vehicle Locator,⁴⁹ Roadside Assistance⁵⁰ and Automatic Collision Notification. Available by subscription. 3-year trial subscription¹⁷
- Blind Spot Monitor (BSM)² with Rear Cross-Traffic Alert (RCTA)⁵⁵
- ToyotaCare⁶⁰ featuring a no cost maintenance plan with roadside assistance⁶⁰

Options and Packages

- JBL^{®67} Audio Upgrade — includes Premium Audio and JBL® w/Clari-Fi^{®25} with 14 speakers
- Moonroof Package — includes power tilt/slide moonroof with sliding sunshade, Qi-compatible wireless smartphone charging³⁰



Hybrid XSE

Adds to or replaces features offered on Hybrid XLE

Powertrain

- Hybrid: 2.5-Liter Dynamic Force 4-Cylinder Engine
- Hybrid system net power: 215 net hp (160 kW)
- 43 city/43 hwy/43 combined est. mpg⁶³
- Electronically controlled Continuously Variable Transmission (ECVT)

Exterior Features

- Sport-tuned suspension
- LED reflector headlights with smoked chrome bezels and on/off feature; LED Daytime Running Lights (DRL) with auto on/off feature
- Front piano-black grille with sport mesh insert and active grille shutter
- Piano-black heated power outside mirrors, turn signal and blind spot warning² indicators
- 18-in. dark-gray-painted alloy wheels with P235/45R18 tires
- Power tilt/slide moonroof

Interior Features

- SofTex[®]-trimmed³³ seats with perforation and Ultrasuede[®]-trimmed³⁴ heated front seats
- Tilt/telescopic premium leather-wrapped steering wheel, Multi-Information Display (MID), paddle shifters, audio, Bluetooth^{®6} hands-free phone and voice-command controls
- Genuine aluminum interior trim
- Aluminum pedal covers
- Frameless auto-dimming rearview mirror with compass and HomeLink^{®40} universal transceiver

Safety/Convenience

- Star Safety System™
- Ten airbags⁴⁷
- Toyota Safety Sense™ P (TSS-P)⁵¹ — Pre-Collision System with Pedestrian Detection (PCS w/PD)⁵² Lane Departure Alert with Steering Assist (LDA w/SA)⁵³ Automatic High Beams (AHB)⁵⁴ and Full-Speed Range Dynamic Radar Cruise Control (DRCC)³⁵
- Safety Connect^{®16} — includes Emergency Assistance, Stolen Vehicle Locator,⁴⁹ Roadside Assistance⁵⁰ and Automatic Collision Notification. Available by subscription. 3-year trial subscription¹⁷
- Blind Spot Monitor (BSM)² with Rear Cross-Traffic Alert (RCTA)⁵⁵
- ToyotaCare⁶⁰ featuring a no cost maintenance plan with roadside assistance⁶⁰

Options and Packages

- JBL^{®67} Audio Upgrade — includes Premium Audio and JBL® w/Clari-Fi^{®25} with 14 speakers

AVALON HYBRID MODELS



Hybrid Limited

Adds to or replaces features offered on Hybrid XLE

Powertrain

- Hybrid: 2.5-Liter Dynamic Force 4-Cylinder Engine
- Hybrid system net power: 215 net hp (160 kW)
- 43 city/43 hwy/43 combined est. mpg⁶³
- Electronically controlled Continuously Variable Transmission (ECVT)

Exterior Features

- LED headlights with smoked chrome bezels and on/off feature; fully integrated LED Daytime Running Lights (DRL) with auto on/off feature and laser-ablation design with dynamic auxiliary turn signals
- LED taillights with laser-ablation design and dynamic auxiliary turn signals
- Color-keyed heated power outside mirrors, turn signal and blind spot warning² indicators, memory features and driver's-side auto-dimming
- 18-in. super-chrome alloy wheels with P235/45R18 tires

Interior Features

- Premium Audio with JBL[®] w/Clari-Fi^{®25} and Dynamic Navigation²⁴ — includes 14 speakers including subwoofer and 1200W amplifier
- Premium leather-trimmed heated and ventilated front seats
- Heated rear seats
- 10-in. color Head-Up Display (HUD) with customizable settings
- Genuine wood interior trim
- Ambient lighting for cup holders, side of console and door handles
- Heated tilt/telescopic premium leather-wrapped steering wheel

Safety/Convenience

- Star Safety System[™]
- Ten airbags⁴⁷
- Toyota Safety Sense[™] P (TSS-P)⁵¹ — Pre-Collision System with Pedestrian Detection (PCS w/PD)⁵² Lane Departure Alert with Steering Assist (LDA w/SA)⁵³ Automatic High Beams (AHB)⁵⁴ and Full-Speed Range Dynamic Radar Cruise Control (DRCC)³⁵
- Safety Connect^{®16} — includes Emergency Assistance, Stolen Vehicle Locator,⁴⁹ Roadside Assistance⁵⁰ and Automatic Collision Notification. Available by subscription. 3-year trial subscription¹⁷
- Blind Spot Monitor (BSM)² with Rear Cross-Traffic Alert (RCTA)⁵⁵
- ToyotaCare⁶⁰ featuring a no cost maintenance plan with roadside assistance⁶⁰

Options and Packages

- Advanced Safety Package — includes Bird's Eye View Camera³⁷ with Perimeter Scan, Intelligent Clearance Sonar (ICS)⁵⁶ and Rear Cross-Traffic Braking (RCTB)⁵⁷

AVALON TRD MODEL



TRD

Adds to or replaces features offered on XSE

Powertrain

- 3.5-Liter V6 with 301 hp @ 6600 rpm
- 22 city/31 hwy/25 combined est. mpg⁶³
- Direct Shift-8AT (8-Speed Electronically Controlled Automatic Transmission)

Exterior Features

- TRD track-tuned suspension
- Increased-thickness underbody braces
- 12.9-in. front disc brakes with front and rear red-painted calipers
- Power tilt/slide moonroof
- LED reflector headlights with smoked chrome bezels and on/off feature; LED DRL with auto on/off feature
- Front piano-black grille with sport mesh insert
- 19-in. TRD matte-black alloy wheels
- TRD piano-black rear spoiler
- TRD cat-back dual exhaust with polished stainless steel tips

Interior Features

- SofTex[®]-trimmed³³ seats with red seatbelts, stitching and fabric inserts, red stitched TRD headrest logo, perforation and Ultrasuede[®]-trimmed³⁴ heated front seats
- Tilt/telescopic premium leather steering wheel with red stitching, Multi-Information Display (MID), paddle shifters, audio, Bluetooth^{®96} hands-free phone and voice-command controls
- Genuine aluminum interior trim
- Aluminum pedal covers
- Black floor mats³⁸ with red "AVALON TRD" logo

Safety/Convenience

- Star Safety System[™]
- Ten airbags⁴⁷
- Toyota Safety Sense[™] P (TSS-P)⁵¹ — Pre-Collision System with Pedestrian Detection (PCS w/PD)⁵² Lane Departure Alert with Steering Assist (LDA w/SA)⁵³ Automatic High Beams (AHB)⁵⁴ and Full-Speed Range Dynamic Radar Cruise Control (DRCC)³⁵
- Safety Connect^{®16} — includes Emergency Assistance, Stolen Vehicle Locator,⁴⁹ Roadside Assistance⁵⁰ and Automatic Collision Notification. Available by subscription. 3-year trial subscription¹⁷
- Blind Spot Monitor (BSM)² with Rear Cross-Traffic Alert (RCTA)⁵⁵
- ToyotaCare⁶⁰ featuring a no cost maintenance plan with roadside assistance⁶⁰

Options and Packages

- JBL^{®67} Audio Upgrade — includes Premium Audio and JBL[®] w/Clari-Fi^{®25} with 14 speakers

WHEELS

Wheels



XLE and Hybrid XLE 17-in. silver-painted alloy wheels with P215/55R17 tires



XSE and Touring 19-in. black-painted machined-finish alloy wheels with P235/40R19 tires



Limited and Hybrid Limited 18-in. super-chrome alloy wheels with P235/45R18 tires



Hybrid XSE 18-in. dark-gray-painted alloy wheels with P235/45R18 tires



TRD 19-in. matte-black alloy wheels with P235/40R19 tires

Color



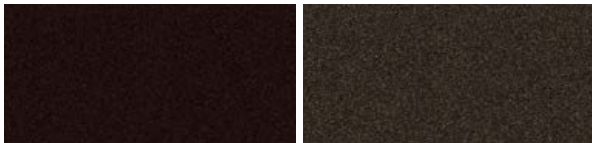
Midnight Black Metallic

Parisian Night Pearl



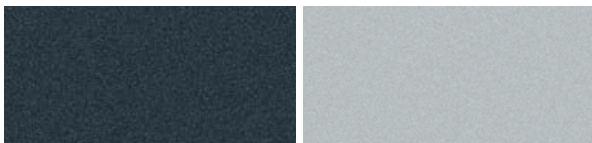
Supersonic Red⁶⁴

Ruby Flare Pearl⁶⁴



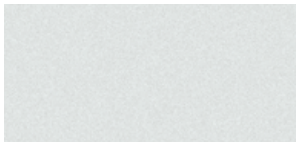
Opulent Amber

Brownstone



Harbor Gray Metallic

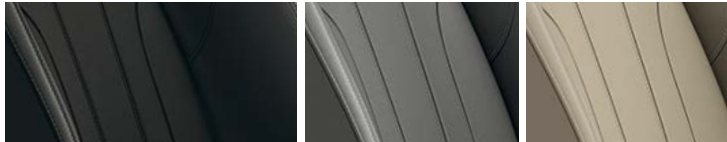
Celestial Silver Metallic



Wind Chill Pearl⁶⁴

Trim

Also available in



XLE SofTex^{®33} trim shown in Black

Graphite

Harvest Beige

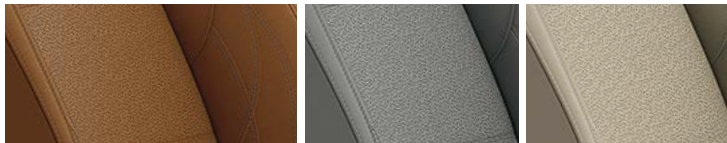
Also available in



XSE and Touring SofTex^{®33} with Ultrasuede^{®34} trim shown in Black

Graphite

Also available in



Limited premium perforated Cognac leather trim

Graphite

Harvest Beige



TRD SofTex^{®33} with Ultrasuede^{®34} trim shown in Black/Red

*Not all colors and trims available on all model grades. See dealer for details. See numbered footnotes in Disclosures section.

ACCESSORIES

A wide range of Genuine Toyota Accessories is available to help make driving your Avalon even more fun. Now your Avalon can reflect your personal style. There's something for everyone. Some accessories may not be available in all regions of the country. For a complete list of accessories, go to toyota.com/avalon.

Alloy wheel locks
All-weather floor liners³⁸
Body side moldings
Cargo tote⁶²
Cargo tray⁶²
Carpet floor mats³⁸

Carpet trunk mat
Door edge guards
Emergency assistance kit
First aid kit
Illuminated doorills
Mudguards

Paint protection film⁷⁰
Rear bumper appliqué
TRD 19-in. alloy wheels
TRD carpet cargo mat
TRD carpet floor mats³⁸
TRD oil cap

TRD oil filter
TRD shift knob
TRD trunk mat
Universal tablet holder⁷¹



Door edge guards



Alloy wheel locks



Body side moldings



TRD 19-in. alloy wheels



All-weather floor liners³⁸



Cargo tray⁶²



TRD shift knob



TRD carpet floor mats³⁸

WARRANTIES

Every Toyota Car, Truck and SUV is built to exceptional standards. And that's not idle boasting. We back it up with these Limited Warranty Coverages:

Basic: 36 months/36,000 miles (all components other than normal wear and maintenance items).

Hybrid-Related Component Coverage: Hybrid-related components, including the battery control module, hybrid control module and inverter with converter, are covered for 8 years/100,000 miles. Refer to applicable *Warranty and Maintenance Guide* for details.

Hybrid Battery: HV battery is covered for 10 years or 150,000 miles, whichever comes first. Warranty coverage is subject to terms and conditions. Refer to applicable *Warranty and Maintenance Guide* for details.

Powertrain: 60 months/60,000 miles (engine, transmission/transaxle, drive system, seatbelts and airbags).

Rust-Through: 60 months/unlimited miles (corrosion perforation of sheet metal).

Emissions: Coverages vary under Federal and California regulations. Refer to applicable *Warranty and Maintenance Guide* for details.

Accessories: For Genuine Toyota Accessories purchased at the time of the new vehicle purchase, the Toyota Accessory Warranty coverage is in effect for 36 months/36,000 miles from the vehicle's in-service date, which is the same coverage as the Toyota New Vehicle Limited Warranty.

For Genuine Toyota Accessories purchased after the new vehicle purchase the coverage is 12 months, regardless of mileage, from the date the accessory was installed on the vehicle, or the remainder of any applicable new vehicle warranty, whichever provides greater coverage.

You may be eligible for transportation assistance if it's necessary that your vehicle be kept overnight for repairs covered under warranty. Please see your authorized Toyota dealership for further details.

For complete details about Toyota's warranties, please visit www.toyota.com, refer to the applicable *Warranty and Maintenance Guide* or see your Toyota dealer.

FEATURES¹

EXTERIOR	XLE	XSE	TOURING	LIMITED	HYBRID XLE	HYBRID XSE	HYBRID LIMITED	TRD
LED reflector headlights and LED Daytime Running Lights (DRL) with auto on/off feature	S	—	—	—	S	—	—	—
LED reflector headlights with smoked chrome bezels and on/off feature; LED Daytime Running Lights (DRL) with auto on/off feature	—	S	—	—	—	S	—	S
LED headlights with smoked chrome bezels and on/off feature; fully integrated LED Daytime Running Lights (DRL) with auto on/off feature and laser-ablation design with dynamic auxiliary turn signals	—	—	S	S	—	—	S	—
LED taillights	S	S	—	—	S	S	—	S
LED taillights with laser-ablation design and dynamic auxiliary turn signals	—	—	S	S	—	—	S	—
Front chrome grille surround with dark gray insert	S	—	—	S	—	—	—	—
Front chrome grille surround with dark gray insert and active grille shutter	—	—	—	—	S	—	S	O
Front piano-black grille with sport mesh insert	—	S	S	—	—	—	—	S
Front piano-black grille with sport mesh insert and active grille shutter	—	—	—	—	—	S	—	—
TRD piano-black front splitters, side aero skirts, and rear diffuser with red pinstriping	—	—	—	—	—	—	—	S
Piano-black window trim	—	—	—	—	—	S	—	S
Color-keyed heated power outside mirrors with turn signal and blind spot warning ² indicators	S	—	—	—	S	—	—	—
Color-keyed heated power outside mirrors with turn signal and blind spot warning ² indicators, memory features and driver's-side auto-dimming	—	—	—	S	—	—	S	—
Piano-black heated power outside mirrors with turn signal and blind spot warning ² indicators, memory feature, and driver's-side auto-dimming	—	—	S	—	—	—	—	—
Piano-black heated power outside mirrors with turn signal and blind spot warning ² indicators	—	S	—	—	—	S	—	S
Aerodynamic front tangential venting	S	S	S	S	S	S	S	S
Power tilt/slide moonroof with sliding sunshade	P	S	S	S	P	S	S	S
17-in. silver-painted alloy wheels with P215/55R17 tires	S	—	—	—	S	—	—	—
18-in. super-chrome alloy wheels with P235/45R18 tires	—	—	—	S	—	—	S	—
19-in. black-painted machined-finish alloy wheels with P235/40R19 tires	—	S	S	—	—	—	—	—
18-in. dark-gray-painted alloy wheels with P235/45R18 tires	—	—	—	—	—	S	—	—
19-in. TRD matte-black alloy wheels with P235/40R19 tires	—	—	—	—	—	—	—	S
Matte-black center cap with red TRD logo	—	—	—	—	—	—	—	S
Washer-linked variable intermittent windshield wipers	S	S	S	S	S	S	S	S
Acoustic noise-reducing windshield and driver and front passenger side windows	S	S	S	S	S	S	S	S
High Solar Energy-Absorbing (HSEA) glass	S	S	S	S	S	S	S	S
Piano-black rear spoiler	—	S	S	—	—	S	—	—
TRD piano-black rear spoiler	—	—	—	—	—	—	—	S
Black rear Toyota emblem and "AVALON" lettering	—	—	—	—	—	—	—	S
Red TRD badge	—	—	—	—	—	—	—	S
TRD cat-back dual exhaust with polished stainless steel tips	—	—	—	—	—	—	—	S
Dual exhaust with chrome tips	S	—	—	S	—	—	—	—
Dual exhaust with quad chrome tips	—	S	S	—	—	—	—	—
Single hidden exhaust	—	—	—	—	S	S	S	—
Intake Sound Generator (ISG)	—	S	S	—	—	—	—	S
Sport sound-tuned exhaust	—	P	S	—	—	—	—	—
INTERIOR								
Dual zone automatic climate control with air filter and rear-seat vents	S	S	S	S	—	—	—	S
Dual zone automatic climate control with air filter, electric compressor, humidity sensor and rear-seat vents	—	—	—	—	S	S	S	—
Audio Plus — includes eight speakers, 9-in. touch-screen, audio jack, USB 2.0 media port ³ with iPod ^{®4} connectivity and control, voice recognition, ⁵ hands-free phone capability and music streaming ⁶ via Bluetooth ^{®6} wireless technology, Apple CarPlay ^{®7} & Amazon Alexa ⁸ compatible, Scout [®] GPS Link ⁹ compatible with up to 3-year trial, ¹⁰ Siri [®] Eyes Free, ¹¹ HD Radio, ¹² SiriusXM ^{®13} with 3-month All Access trial ¹⁴ Connected Services ¹⁵ — Safety Connect ^{®16} with 3-year trial, ¹⁷ Service Connect ^{®18} with 3-year trial, ¹⁹ Remote Connect ^{®20} with 6-month trial, ²¹ Wi-Fi Connect ^{®22} Powered by Verizon with up to 2 GB within 6-month trial. ²³ See toyota.com/audio-multimedia for details.	S	S	—	—	S	S	—	S

See numbered footnotes in Disclosures section.

S = Standard P = Package — = Not available

FEATURES (continued)


INTERIOR (CONTINUED)

	XLE	XSE	TOURING	LIMITED	HYBRID XLE	HYBRID XSE	HYBRID LIMITED	TRD
Premium Audio, Dynamic Navigation ²⁴ and JBL® w/Clari-Fi ²⁵ — includes 14 speakers including subwoofer and 1200W amplifier, 9-in. touch-screen, USB 2.0 media port, ³ Dynamic Navigation ²⁴ with 3-year trial, ²⁶ Dynamic POI Search, Dynamic Voice Recognition, ²⁷ hands-free phone capability and music streaming ⁶ via Bluetooth ^{®6} wireless technology, Apple CarPlay ^{®7} & Amazon Alexa ^{®9} compatible, Siri [®] Eyes Free, ¹¹ HD Radio, ^{TM12} SiriusXM ^{®13} with 3-month All Access trial, ¹⁴ Connected Services ¹⁵ — Safety Connect ^{®16} with 3-year trial, ¹⁷ Service Connect ¹⁸ with 3-year trial, ¹⁹ Remote Connect ²⁰ with 6-month trial, ²¹ Wi-Fi Connect ²² Powered by Verizon with up to 2 GB within 6-month trial, ²³ Destination Assist ²⁸ with 6-month trial. ²⁹ See toyota.com/audio-multimedia for details.	O	O	S	S	O	O	S	O
Auto engine shutoff	S	S	S	S	S	S	S	S
Active Noise Control (ANC)	—	P	S	—	—	—	—	—
Engine Sound Enhancement (ESE)	—	P	S	—	—	—	—	—
Qi-compatible wireless smartphone charging ³⁰	P	S	S	S	P	S	S	S
Integrated backup camera ³¹ with dynamic gridlines	S	S	S	S	S	S	S	S
7-in. TFT Multi-Information Display (MID) with customizable settings, odometer, outside temperature, fuel economy and trip information, current/average fuel economy, distance to empty, average speed, trip distance with timer, TPMS ³² scheduled maintenance, and warning messages	S	S	S	S	—	—	—	S
7-in. TFT Multi-Information Display (MID) with customizable settings, odometer, outside temperature, fuel economy and trip information, current/average fuel economy, distance to empty, average speed, hybrid system information, energy monitor, TPMS ³² scheduled maintenance, and warning messages	—	—	—	—	S	S	S	—
SofTex [®] -trimmed ³³ heated front seats; 8-way adjustable driver's seat with 2-way power lumbar support; 8-way adjustable passenger seats	S	—	—	—	S	—	—	—
SofTex [®] -trimmed ³³ seats with perforation and Ultrasuede [®] -trimmed ³⁴ heated front seats; 8-way adjustable driver's seat with 2-way power lumbar support; 8-way adjustable passenger seats	—	S	—	—	—	S	—	—
SofTex [®] -trimmed ³³ seats with red seatbelts, stitching and fabric inserts, red stitched TRD headrest logo, perforation and Ultrasuede [®] -trimmed ³⁴ heated front seats, 8-way adjustable driver's seat with 2-way power lumbar support; 8-way adjustable passenger seats	—	—	—	—	—	—	—	S
Premium leather-trimmed heated and ventilated front seats; 8-way adjustable driver's seat with 4-way power lumbar support and memory function; 8-way adjustable passenger seats with 4-way power lumbar support	—	—	—	S	—	—	S	—
SofTex [®] -trimmed ³³ seats with perforation and Ultrasuede [®] -trimmed ³⁴ heated and ventilated front seats; 8-way adjustable driver's seat with 4-way power lumbar support and memory function; 8-way adjustable passenger seats with 4-way power lumbar support	—	—	S	—	—	—	—	—
60/40 split, folding rear seats with two adjustable and one fixed headrest, and armrest with cup holders	S	S	S	S	S	S	S	S
Heated rear seats	—	—	S	S	—	—	S	—
Full-Speed Range Dynamic Radar Cruise Control (DRCC) ³⁵	S	S	S	S	S	S	S	S
Tilt/telescopic leather-wrapped steering wheel with Multi-Information Display (MID), audio and Bluetooth ^{®6} hands-free phone and voice-command controls	S	—	—	—	S	—	—	—
Tilt/telescopic premium leather-wrapped steering wheel, Multi-Information Display (MID), paddle shifters, audio, Bluetooth ^{®6} hands-free phone and voice-command controls	—	S	—	—	—	S	—	—
Tilt/telescopic premium leather steering wheel with red stitching, Multi-Information Display (MID), paddle shifters, audio, Bluetooth ^{®6} hands-free and voice-command controls	—	—	—	—	—	—	—	S
Heated tilt/telescopic premium leather-wrapped steering wheel with memory function, Multi-Information Display (MID), paddle shifters, audio, Bluetooth ^{®6} hands-free phone and voice-command controls	—	—	S	—	—	—	—	—
Heated tilt/telescopic premium leather-wrapped steering wheel with memory function, Multi-Information Display (MID), audio, Bluetooth ^{®6} hands-free phone and voice-command controls	—	—	—	S	—	—	S	—
3-mode switch (ECO, Normal, Sport)	S	S	—	S	—	—	—	S
4-mode switch (EV ³⁶ ECO, Normal, Sport)	—	—	—	—	S	S	S	—
4-mode switch (ECO, Normal/Custom, Sport, Sport+)	—	—	S	—	—	—	—	—
10-in. color Head-Up Display (HUD) with customizable settings, speedometer, navigation, shift position, compass, TSS-P indicators, audio, phone, outside temperature and adjustable brightness	—	—	S	S	—	—	—	—
10-in. color Head-Up Display (HUD) with customizable settings, speedometer, navigation, shift position, compass, TSS-P indicators, audio, phone, outside temperature, Hybrid System Indicator, and adjustable brightness	—	—	—	—	—	—	S	—
Bird's Eye View Camera ³⁷ with Perimeter Scan, overhead 360-degree view in Drive and Reverse, and curb view	—	—	P	P	—	—	P	—

See numbered footnotes in Disclosures section.

S = Standard P = Package — = Not available

FEATURES (continued)

INTERIOR (continued)	XLE	XSE	TOURING	LIMITED	HYBRID XLE	HYBRID XSE	HYBRID LIMITED	TRD
Hydrographic interior trim	S	—	—	—	S	—	—	—
Genuine aluminum interior trim	—	S	S	—	—	S	—	—
Genuine aluminum interior trim with red stitched accents	—	—	—	—	—	—	—	S
Genuine wood interior trim	—	—	—	S	—	—	S	—
Black leather shift knob with red stitching and debossed TRD logo	—	—	—	—	—	—	—	S
Black floor mats ³⁸ with red "AVALON TRD" logo and red outline	—	—	—	—	—	—	—	S
Aluminum pedal covers	—	S	S	—	—	S	—	S
Ambient lighting for cup holders, side of console and door handles	—	—	S	S	—	—	S	—
Smart Key System ³⁹ on front doors and trunk with Push Button Start, remote keyless entry system and remote illuminated entry	S	S	S	S	S	S	S	S
Power windows with 4-window auto up/down, jam protection and retained-power features	S	S	S	S	S	S	S	S
Rear window defogger with timer	S	S	S	S	S	S	S	S
Power door locks with shift-linked automatic locking feature with anti-lockout feature	S	S	S	S	S	S	S	S
Auto-dimming rearview mirror	S	—	—	—	S	—	—	—
Frameless auto-dimming rearview mirror and HomeLink ⁴⁰ universal transceiver	—	S	S	S	—	S	S	S
Overhead console with maplights and Safety Connect ¹⁶ button	S	S	S	S	S	S	S	S
Covered center console, armrest and storage	S	S	S	S	S	S	S	S
One 12V auxiliary power outlet ⁴¹	S	S	S	S	S	S	S	S
Four USB 2.0 charge ports ³	S	S	S	S	S	S	S	S
Dual sun visors with sliding extensions and illuminated vanity mirrors	S	S	S	S	S	S	S	S
Two front and two rear cup holders; two front-door and two rear bottle holders	S	S	S	S	S	S	S	S
Electric Parking Brake (EPB) ⁴² with Brake Hold function ⁴³	S	S	S	S	S	S	S	S
SAFETY/CONVENIENCE								
 Star Safety System™ — includes Enhanced Vehicle Stability Control (VSC) ⁴⁴ Traction Control (TRAC), 4-wheel Anti-lock Brake System (ABS), Electronic Brake-force Distribution (EBD), Brake Assist (BA) ⁴⁵ and Smart Stop Technology® (SST) ⁴⁶	S	S	S	S	S	S	S	S
Ten airbags ⁴⁷ — includes driver and front passenger Advanced Airbag System, driver and front passenger seat-mounted side airbags, driver and front passenger knee airbags, rear seat-mounted side airbags, and front and rear side curtain airbags	S	S	S	S	S	S	S	S
Driver and front passenger Whiplash-Injury-Lessening (WIL) seats ⁴⁸	S	S	S	S	S	S	S	S
3-point seatbelts for all seating positions; driver-side Emergency Locking Retractor (ELR) and Automatic/Emergency Locking Retractor (ALR/ELR) on all passenger seatbelts	S	S	S	S	S	S	S	S
LATCH (Lower Anchors and Tethers for CHildren) includes lower anchors on outboard rear seats	S	S	S	S	S	S	S	S
Child-protector rear door locks and power window lockout control	S	S	S	S	S	S	S	S
Energy-absorbing collapsible steering column	S	S	S	S	S	S	S	S
Front and rear energy-absorbing crumple zones	S	S	S	S	S	S	S	S
Side-impact door beams	S	S	S	S	S	S	S	S
Tire Pressure Monitor System (TPMS) ³² with direct pressure readout	S	S	S	S	S	S	S	S
Collision sensors: deactivate high-voltage battery	—	—	—	—	S	S	S	—
Safety Connect ¹⁶ — includes Emergency Assistance, Stolen Vehicle Locator, ⁴⁹ Roadside Assistance ⁵⁰ and Automatic Collision Notification; with three-year trial subscription: ¹⁷	S	S	S	S	S	S	S	S
Toyota Safety Sense™ P (TSS-P) ⁵¹ — Pre-Collision System with Pedestrian Detection (PCS w/PD); ⁵² Lane Departure Alert with Steering Assist (LDA w/SA) ⁵³ Automatic High Beams (AHB) ⁵⁴ and Full-Speed Range Dynamic Radar Cruise Control (DRCC) ⁵⁵	S	S	S	S	S	S	S	S
Blind Spot Monitor (BSM) ² with Rear Cross-Traffic Alert (RCTA) ⁵⁵	S	S	S	S	S	S	S	S
Intelligent Clearance Sonar (ICS) ⁵⁶ with Rear Cross-Traffic Braking (RCTB) ⁵⁷	—	—	P	P	—	—	P	—
Hill Start Assist Control (HAC) ⁵⁸	S	S	S	S	S	S	S	S
Anti-theft system with alarm and engine immobilizer ⁵⁹	S	S	S	S	S	S	S	S
ToyotaCare ⁶⁰ featuring a no cost maintenance plan with roadside assistance ⁶⁰	S	S	S	S	S	S	S	S

See numbered footnotes in Disclosures section.

S = Standard P = Package — = Not available

SPECIFICATIONS

MECHANICAL/PERFORMANCE	XLE	XSE	TOURING	LIMITED	HYBRID XLE	HYBRID XSE	HYBRID LIMITED	TRD
ENGINE								
Hybrid engine: 2.5-Liter Dynamic Force 4-Cylinder DOHC 16-Valve D-4S Dual Injection with VVT-iE, VVT-i with ECO, Normal, Sport and EV ³⁶ drive modes; 176 hp @ 5700 rpm; 163 lb.-ft. @ 3600-5200 rpm	—	—	—	—	S	S	S	—
3.5-Liter V6 DOHC 24-Valve D-4S Dual Injection with VVT-iW and VVT-i; 301 hp @ 6600 rpm; 267 lb.-ft. @ 4700 rpm	S	S	S	S	—	—	—	S
Compression ratio	11.8:1	11.8:1	11.8:1	11.8:1	14.0:1	14.0:1	14.0:1	11.8:1
EMISSION RATING								
Super Ultra Low Emission Vehicle (SULEV)	—	—	—	—	S	S	S	—
Ultra Low Emission Vehicle II (ULEV-II)	S	S	S	S	—	—	—	S
ELECTRONIC MOTOR								
Power output	—	—	—	—	118 hp (88 kW)	118 hp (88 kW)	118 hp (88 kW)	—
Torque	—	—	—	—	149 lb.-ft. (202 N·m)	149 lb.-ft. (202 N·m)	149 lb.-ft. (202 N·m)	—
Voltage	—	—	—	—	650V (max sys.)	650V (max sys.)	650V (max sys.)	—
Hybrid system net power	—	—	—	—	215 hp	215 hp	215 hp	—
TRACTION BATTERY								
Sealed Nickel-Metal Hydride (Ni-MH) ⁶¹	—	—	—	—	S	S	S	—
Voltage	—	—	—	—	244.8V	244.8V	244.8V	—
TRANSMISSION								
Direct Shift-8AT 8-speed Electronically Controlled automatic Transmission with intelligence (ECT-i) with Sequential Shiftmatic™ Mode	S	S	S	S	—	—	—	S
Electronically controlled Continuously Variable Transmission (ECVT) with Sequential Shiftmatic™ Mode	—	—	—	—	S	S	S	—
DRIVETRAIN								
Front-Wheel Drive (FWD)	—	—	—	—	—	—	—	—
BODY CONSTRUCTION								
Unitized body with front and rear anti-vibration sub-frames	S	S	S	S	S	S	S	S
Increased-thickness underbody braces	S	S	S	S	S	S	S	S
SUSPENSION								
Independent MacPherson strut front suspension with stabilizer bar; multi-link rear suspension with stabilizer bar	S	—	—	S	S	—	S	—
Independent MacPherson strut front suspension with stabilizer bar; multi-link rear suspension with sport-tuned shock absorbers, stabilizer bar and springs	—	S	S	—	—	S	—	—
Independent MacPherson strut front suspension; multi-link rear suspension; TRD track-tuned front and rear coil springs and shock absorbers	—	—	—	—	—	—	—	S
Adaptive Variable Suspension (AVS) system	—	—	S	—	—	—	—	—
STEERING								
Electric Power Steering (EPS); power-assisted rack-and-pinion	S	S	S	S	S	S	S	S
Turning circle diameter, curb to curb (ft.)	37.7	38.6	38.7	38.7	37.7	38.7	38.7	38.6
BRAKES								
Power-assisted, ventilated 11.65-in. front disc brakes; solid 11-in. rear disc brakes with hydraulic brake booster, Electronically Controlled Braking (ECB) system and Star Safety System™	S	S	S	S	—	—	—	—
Power-assisted, ventilated 11.65-in. front disc brakes; solid 11-in. rear disc brakes with hydraulic brake booster, Electronically Controlled Braking (ECB) system, integrated regenerative braking and Star Safety System™	—	—	—	—	S	S	S	—
Power-assisted ventilated 12.9-in. front disc brakes with dual piston calipers; solid 11.06-in. rear disc brakes with hydraulic brake booster; red painted front and rear calipers; unique brake booster and pedal stiffness tuning; Electronically Controlled Braking (ECB) system and Star Safety System™	—	—	—	—	—	—	—	S
Active Cornering Assist (ACA)	S	S	S	S	S	S	S	S

See numbered footnotes in Disclosures section.

S = Standard P = Package — = Not available

SPECIFICATIONS (continued)

DIMENSIONS	XLE	XSE	TOURING	LIMITED	HYBRID XLE	HYBRID XSE	HYBRID LIMITED	TRD
EXTERIOR DIMENSIONS (IN.)								
Overall height, unloaded	56.5	56.5	56.5	56.5	56.5	56.5	56.5	55.9
Overall width	72.8	72.8	72.8	72.8	72.8	72.8	72.8	72.8
Overall length	195.9	195.9	195.9	195.9	195.9	195.9	195.9	195.9
Wheelbase	113.0	113.0	113.0	113.0	113.0	113.0	113.0	113.0
Ground clearance	5.3	5.3	5.3	5.3	5.3	5.3	5.3	5.3
Track (front/rear)	63.0/63.6	62.6/63.4	62.6/63.4	62.6/63.4	63.0/63.6	62.3/63.6	62.3/63.6	62.6/63.4
Coefficient of drag (Cd)	0.27	0.27	0.27	0.27	0.27	0.27	0.27	0.27
INTERIOR DIMENSIONS (IN.)								
Head room	37.4/37.5	37.4/37.5	37.4/37.5	37.4/37.5	37.4/37.1	37.4/37.1	37.4/37.1	37.4/37.5
Shoulder room	58.3/57.1	58.3/57.1	58.3/57.1	58.3/57.1	58.3/57.1	58.3/57.1	58.3/57.1	58.3/57.1
Hip room	55.8/54.8	55.8/54.8	55.8/54.8	55.8/54.8	55.8/54.7	55.8/54.7	55.8/54.7	55.8/54.8
Leg room	42.1/40.3	42.1/40.3	42.1/40.3	42.1/40.3	42.1/40.4	42.1/40.4	42.1/40.4	42.1/40.3
WEIGHTS/CAPACITIES								
Curb weight (lb.)	3560	3638	3704	3660	3638	3671	3715	3638
EPA passenger volume (cu. ft.)	104.3	102.9	102.9	102.9	103.8	102.2	102.2	102.9
Cargo volume ⁶² rear seatbacks up (cu. ft.)	16.09	16.09	16.09	16.09	16.09	16.09	16.09	16.09
Fuel tank (gal.)	14.5	15.8	15.8	15.8	13.2	13.2	13.2	15.8
Seating capacity	5	5	5	5	5	5	5	5
TIRES								
Type: All-season	S	S	S	S	S	S	S	S
Spare: Temporary	S	S	S	S	S	S	S	S
MILEAGE ESTIMATES (mpg city/highway/combined)⁶³								
	22/32/26	22/31/25	22/31/25	22/31/25	43/44/44	43/43/43	43/43/43	22/31/25

See numbered footnotes in Disclosures section.

S = Standard

CARS BUILT FOR THE WAY YOU LIVE

At Toyota, we build cars for how you live. From building advanced safety features designed to help prevent crashes to driving cross-country to understand how we can make your driving experience better, our work starts with understanding your needs. Building cars for how you live also means thinking about tomorrow — from fuel efficiency and environmental innovations, to things beyond cars, like a bicycle that you can control with your mind. And because what we learn building cars can help improve lives in other places, we do things like help communities rebuild their homes quickly after a disaster and work with soup kitchens to help them serve more people faster. Toyota. Built for how you live.

DISCLOSURES

1. Toyota strives to build vehicles to match customer interest and thus they typically are built with popular options and option packages. Not all options/packages are available separately and some may not be available in all regions of the country. See toyota.com for information about options/packages commonly available in your area. If you would prefer a vehicle without any or with different options, contact your dealer to check for current availability or the possibility of placing a special order. Color(s) depicted may vary based on multiple factors, including ambient lighting and the format in which it is being viewed (e.g., computer, mobile device or print). 2. Do not rely exclusively on the Blind Spot Monitor. Always look over your shoulder and use your turn signal. There are limitations to the function, detection and range of the monitor. See *Owner's Manual* for additional limitations and details. 3. May not be compatible with all mobile phones, MP3/WMA players and like models. 4. iPod®, iPhone® and App Store are registered trademarks of Apple Inc. All rights reserved. 5. Voice recognition capabilities vary by head unit. 6. The Bluetooth® word mark and logos are registered trademarks owned by Bluetooth SIG, Inc., and any use of such marks by Toyota is under license. A compatible Bluetooth®-enabled phone must first be paired. Phone performance depends on software, coverage and carrier. 7. Apps and services are subject to change at any time without notice. Data charges may apply. Apple CarPlay® functionality requires a compatible iPhone® connected with an approved data cable into the USB media port. Apple CarPlay® is a registered trademark of Apple Inc. 8. Amazon, Alexa and all related logos are trademarks of Amazon.com, Inc. or its affiliates. Requires adequate signal strength and smartphone. See applicable application for details. Not all Amazon Alexa functionality is available for in-vehicle use and some functions depend on smart home technology. Download of the Toyota+Alexa app is required to begin in-vehicle use of Alexa. Data charges may apply. Apps, prices and services subject to change at any time without notice. To learn more, go to <https://www.toyota.com/audio-multimedia>. To learn more about Toyota's data collection, use, sharing and retention, please visit <https://www.toyota.com/privacyvts/>. 9. The Scout® GPS Link app is compatible with select vehicle models. Availability and accuracy of the information provided by Scout® GPS Link is subject to change at any time without notice and is dependent upon many factors, including smartphone connectivity, capability and cellular reception. Always use safe driving practices and follow all traffic rules. Data charges may apply. Scout® and Telenav® are registered trademarks of Telenav, Inc. 10. The Scout® GPS Link trial is at no extra cost and begins when the app is downloaded on the vehicle. Contact the Toyota Customer Experience Center at 800-331-4331 for length of trial period. After the trial period expires, enrollment in a paid subscription is required to access the service. Terms and conditions apply. 11. Always focus on the road while driving. Siri® is available on select iPhone®/iPad® models and requires Internet access. Siri® is not available in all languages or all areas and features vary by area. Some Siri® functionality and commands are not accessible in the vehicle. See apple.com and phone carrier for details. Data charges may apply. Siri® is a registered trademark of Apple Inc. 12. HD Radio™ Technology manufactured under license from iBiquity Digital Corporation U.S. and Foreign Patents. HD Radio™ and the HD, HD Radio, and "Arc" logos are proprietary trademarks of iBiquity Digital Corp. 13. SiriusXM® audio services require a subscription sold separately by Sirius XM Radio Inc. If you decide to continue service after your trial, the subscription plan you choose will automatically renew thereafter and you will be charged according to your chosen payment method at then-current rates. Fees and taxes apply. To cancel, you must call SiriusXM at 1-866-635-2349. See SiriusXM Customer Agreement for complete terms at www.siriusxm.com. All fees and programming subject to change. Not all vehicles or devices are capable of receiving all services offered by SiriusXM. Current information and features may not be available in all locations, or on all receivers. ©2019 Sirius XM Radio Inc. SiriusXM and all related marks and logos are trademarks of Sirius XM Radio Inc. 14. SiriusXM All Access trial length and service availability may vary by model, model year or trim. 15. Connected Services depends on an operative telematics device, a cellular connection, navigation map data, GPS signal strength and other factors outside of Toyota's control, all of which can limit system functionality or availability, including access to response center and emergency support. Service may vary by vehicle and region. Apps and services subject to change at any time without notice. See toyota.com/connected-services for details. To learn about Toyota's data collection, use, sharing and retention, please visit <https://www.toyota.com/privacyvts/>. Stolen vehicle police report required to use Stolen Vehicle Locator. 16. Toyota Safety Connect® depends on an operative telematics device, a cellular connection, navigation map data and GPS signal strength and other factors outside of Toyota's control, all of which can limit system functionality or availability, including access to response center and emergency support. Stolen vehicle police report required to use Stolen Vehicle Locator. Registration required. Service subject to change at any time without notice. Terms and conditions of subscription service agreement apply. Service may vary by vehicle and region. See usage precautions and service limitations in *Owner's Manual* and at toyota.com/connected-services/ for additional details. To learn about Toyota's data collection, use, sharing and retention, please visit <https://www.toyota.com/privacyvts/>. 17. The Safety Connect® trial period is at no extra cost and begins on the original date of purchase or lease of a new vehicle. After the trial period expires, enrollment in paid subscription is required to access the service. 18. Information provided is based on the last time data was collected from the vehicle and may not be up to date. Service Connect depends on an operative telematics device, a cellular connection, navigation map data, GPS signal strength and other factors outside of Toyota's control, which can limit functionality or availability. Service may vary by vehicle and region. Registration required. Service subject to change at any time without notice. Terms and conditions of subscription service agreement apply. See usage precautions and service limitations in *Owner's Manual* and at toyota.com/connected-services/ for additional details. To learn about Toyota's data collection, use, sharing and retention, please visit <https://www.toyota.com/privacyvts/>. 19. The Service Connect trial period is at no extra cost and begins on the original date of purchase or lease of a new vehicle. After the respective trial period expires, enrollment in paid subscription is required to access the service. 20. Use only if aware of circumstances surrounding vehicle and it is legal and safe to do so (e.g., do not remotely start engine if vehicle is in an enclosed space or vehicle is occupied by a child). Remote Connect depends on an operative telematics device, a cellular connection, GPS signal strength and other factors outside of Toyota's control, which can limit system functionality and availability. Service may vary by vehicle and region. Registration and app download required. Terms and conditions of subscription service agreement apply. Data charges may apply. Remote start/stop not available on manual-transmission-equipped vehicles. Services subject to change at any time without notice. See usage precautions and service limitations in *Owner's Manual* and at <https://www.toyota.com/connected-services/> for additional details. To learn about Toyota's data collection, use, sharing and retention, please visit <https://www.toyota.com/privacyvts/>. 21. The Remote Connect trial period is at no extra cost and begins on the original date of purchase or lease of a new vehicle. After the trial period expires, enrollment in a paid subscription is required to access the service. Terms and conditions apply. 22. Wi-Fi Connect is available on select 2018 and newer Toyota vehicles. Visit toyota.com for vehicle availability. Verizon Wireless is the network provider for Wi-Fi Connect, which uses Verizon's 4G LTE network to transmit data. Data usage and charges apply. Coverage not available everywhere; see vzw.com. See verizonwireless.com/bestnetwork for details. LTE is a trademark of ETSI. Other terms apply. Up to 5 devices can be supported using in-vehicle connectivity. Verizon Wireless data subscription required upon end of 6-month trial period or use of 2-GB data (whichever comes first). Use of Wi-Fi Connect subject to Verizon Wireless' Customer Agreement (verizonwireless.com/legal/notices/customer-agreement/), Privacy Policy (verizon.com/about/privacy/privacy-policy-summary), and data use policies (verizonwireless.com/support/vz-email-legal/). Apps and services subject to change at any time without notice. 23. The Wi-Fi Connect trial period is at no extra cost and begins on the date of activation. After the trial period expires, enrollment in a paid subscription is required to access the service. Terms and conditions apply. 24. Dynamic Navigation depends on an operative telematics device, a cellular connection, navigation map data and GPS signal strength, and other factors outside of Toyota's control, which can limit system functionality or availability. Services not available in every city or roadway. Use common sense when relying on information provided. Service may vary by vehicle and region. Registration is required. Terms and conditions of subscription services agreement apply. See *Owner's Manual* and <https://toyota.com/connected-services/> for additional limitations and details. To learn about Toyota's data collection, use, sharing and retention, please visit <https://www.toyota.com/privacyvts/>. 25. JBL® and Clari-Fi® are registered trademarks of Harman International Industries, Inc. 26. The Dynamic Navigation three-year trial period begins on the original date of purchase or lease of a new vehicle. After the trial period expires, enrollment in paid subscription is required to access the service. 27. Dynamic voice recognition capabilities vary by head unit. 28. Destination Assist depends on an operative telematics device, a cellular connection, navigation map data and GPS signal strength and other factors outside of Toyota's control, which can limit system ability functionality or availability. Use common sense when relying on this information. Service may vary by vehicle and region. Registration required. Services subject to change at any time without notice. Terms and conditions of subscription services agreement apply. See *Owner's Manual* and toyota.com/connected-services/ for additional limitations and details. To learn about Toyota's data collection, use, sharing and retention, please visit <https://www.toyota.com/privacyvts/>. 29. The Destination Assist Connect trial period is at no extra cost and begins on the original date of purchase or lease of a new vehicle. After the trial period expires, enrollment in a paid subscription is required to access the service. 30. Qi wireless charging may not be compatible with all mobile phones, MP3/WMA players and like models. When using the wireless charging system, avoid placing metal objects between the wireless charger and the mobile device when charging is active. Doing so may cause metal objects to become hot and could cause burns. 31. The backup camera does not provide a comprehensive view of the rear area of the vehicle and you should also look around the vehicle, using mirrors to confirm rearward clearance. Environmental conditions may limit effectiveness and view may become obscured. See *Owner's Manual* for additional limitations and details. 32. The Tire Pressure Monitor System alerts the driver when tire pressure is critically low. For optimal tire wear and performance, tire pressure should be checked regularly with a gauge; do not rely solely on the monitor system. See *Owner's Manual* for additional limitations and details. 33. SofTex® is a registered trademark of Toyota Motor Sales, U.S.A., Inc.

DISCLOSURES (continued)

34. Ultrasuede® is a registered trademark of Toray Industries, Inc. **35.** Dynamic Radar Cruise Control is designed to assist the driver and is not a substitute for safe and attentive driving practices. System effectiveness is dependent on many factors including road, weather and traffic conditions. DRCC not available on manual transmissions. See *Owner's Manual* for additional limitations and details. **36.** EV Mode works under certain conditions at low speeds up to one-half mile. Quick acceleration and braking, road and vehicle conditions, or climate control use may prevent or limit usage or effectiveness of EV Mode. See www.fueleconomy.gov. Driving speed and distance are limited. See *Owner's Manual* for additional limitations and details. **37.** The Bird's Eye View Camera does not provide a comprehensive view of the area surrounding the vehicle and you should also look around the vehicle, using mirrors to confirm surrounding clearance. Environmental conditions may limit effectiveness and view may become obscured. See *Owner's Manual* for additional limitations and details. **38.** This floor mat/floor liner was designed specifically for use in your model and model year vehicle and SHOULD NOT be used in any other vehicle. To avoid potential interference with pedal operation, each mat/liner must be secured with its fasteners. Do not install a floor mat/floor liner on top of an existing floor mat/floor liner. **39.** The Smart Key System may interfere with some pacemakers or cardiac defibrillators. If you have one of these medical devices, please talk to your doctor to see if you should deactivate this system. **40.** HomeLink® and the HomeLink® house icon are registered trademarks of Gentex Corporation. **41.** Rated for 12 volts. See *Owner's Manual* for additional limitations and details. **42.** When the system is on, Electric Parking Brake is designed to engage the Parking Brake under limited conditions. It may not hold the vehicle under all conditions. See *Owner's Manual* for additional limitations and details. **43.** When the system is on, Brake Hold is designed to keep the brakes engaged after the driver brings the vehicle to a complete stop. It may not hold the vehicle under certain conditions and does not function when the vehicle is in Reverse. Brake Hold is not a substitute for safe and attentive driving. See *Owner's Manual* for additional limitations and details. **44.** Vehicle Stability Control is an electronic system designed to help the driver maintain vehicle control under adverse conditions. It is not a substitute for safe and attentive driving practices. Factors including speed, road conditions, weather and driver steering input can all affect whether VSC will be effective in preventing a loss of control. See *Owner's Manual* for additional limitations and details. **45.** Brake Assist is designed to help the driver take advantage of ABS and is not a substitute for safe driving practices. Braking effectiveness also depends on proper vehicle maintenance, tire and road conditions. See *Owner's Manual* for additional limitations and details. **46.** Smart Stop Technology® operates only in the event of certain contemporaneous brake and accelerator pedal applications. When engaged, the system will reduce power to help the brakes bring the vehicle to a stop. Factors including speed, road conditions and driver input can all impact stopping distance. Smart Stop Technology® is not a substitute for safe and attentive driving and does not guarantee instant stopping. See *Owner's Manual* for additional limitations and details. **47.** Airbag systems are Supplemental Restraint Systems and are designed to inflate only under certain conditions and in certain types of severe collisions. To decrease the risk of injury from an inflating airbag, always wear seatbelts and sit upright in the middle of the seat as far back as possible. Do not put objects in front of an airbag or around the seatback. Do not use a rearward-facing child seat in any front passenger seat. See *Owner's Manual* for additional limitations and details. **48.** Whiplash-Injury-Lessening front seats can help reduce the severity of whiplash injury in certain rear-end collisions. **49.** Building and/or parking structures may limit system effectiveness. Stolen vehicle police report required to use Stolen Vehicle Locator. For additional assistance contact the Toyota Customer Experience Center at 1-800-331-4331. **50.** Requires adequate cellular coverage and GPS signal strength. May not work in all areas. Service may vary by vehicle and region. See Toyota Dealer for details and exclusions. **51.** Toyota Safety Sense™ effectiveness is dependent on many factors including road, weather and vehicle conditions. Drivers are responsible for their own safe driving. Always pay attention to your surroundings and drive safely. See *Owner's Manual* for additional limitations and details. **52.** The Pre-Collision System (PCS) with Pedestrian Detection (PD) is designed to determine if impact is imminent and help reduce impact speed and damage in certain frontal collisions involving a vehicle or a pedestrian. PCS w/PD is not a substitute for safe and attentive driving. System effectiveness depends on many factors, such as speed, size and position of pedestrian and weather, light and road conditions. See *Owner's Manual* for additional limitations and details. **53.** Lane Departure Alert with Steering Assist is designed to read visible lane markers under certain conditions. It provides a visual and audible alert and slight steering force when lane departure is detected. It is not a collision-avoidance system or a substitute for safe and attentive driving. Effectiveness is dependent on many factors including road, weather and vehicle conditions. See *Owner's Manual* for additional limitations and details. **54.** Automatic High Beams operate at speeds above 25 mph. Factors such as a dirty windshield, weather, lighting and terrain limit effectiveness, requiring the driver to manually operate the high beams. See *Owner's Manual* for additional limitations and details. **55.** Do not rely exclusively on the Rear Cross-Traffic Alert system. Always look over your shoulder and use your mirrors to confirm rear clearance. There are limitations to the function, detection and range of the system. See *Owner's Manual* for additional limitations and details. **56.** Intelligent Clearance Sonar (ICS) is designed to assist drivers in avoiding potential collisions at speeds of 9 mph or less. Certain vehicle and environmental factors, including an object's shape, size and composition, may affect the system's effectiveness. Always look around outside the vehicle and use mirrors to confirm clearance. See *Owner's Manual* for additional limitations and details. **57.** Do not rely exclusively on the Rear Cross-Traffic Braking system. Always look over your shoulder and use your mirrors to confirm rear clearance. The system cannot prevent all collisions, and performance is dependent on road, weather and vehicle conditions. See *Owner's Manual* for additional limitations and details. **58.** Hill Start Assist Control is designed to help minimize backward rolling on steep ascents. It is not a substitute for safe driving judgment and practices. Factors including speed, grade, surface conditions and driver input can all affect whether HAC will be effective in preventing a loss of control. See *Owner's Manual* for additional limitations and details. **59.** The engine immobilizer is a state-of-the-art anti-theft system that is initiated when you insert your key into the ignition switch or bring a Smart Key fob into the vehicle. The engine will only start if the code in the transponder chip inside the key/fob matches the code in the vehicle's immobilizer. The transponder chip is embedded in the key/fob and can be costly to replace. If you lose a key or fob, your Toyota dealer can help or go to www.aloa.org to find a qualified locksmith in your area who can perform high-security key service. **60.** ToyotaCare covers normal factory scheduled maintenance at no additional cost for two years or 25,000 miles, whichever comes first. Certain models require a different maintenance schedule as described in their Maintenance Guide. 24-hour Roadside Assistance is also included for two years, unlimited mileage. Roadside Assistance does not include parts and fluids, except emergency fuel delivery. See Toyota dealer for details and exclusions. Valid only in the continental U.S. and Alaska. **61.** Hybrid vehicle battery expected life is 150,000 miles based on laboratory bench testing. **62.** Cargo and load capacity limited by weight and distribution. Always properly secure cargo and cargo area. **63.** 2020 EPA-estimated mileage. Actual mileage will vary. **64.** Extra-cost color. **65.** Not all smartwatches are compatible with Remote Connect: Samsung Gear, Fitbit, Garmin are not compatible. **66.** Apple and the Apple logo are trademarks of Apple Inc., registered in the U.S. and other countries. **67.** JBL® is a registered trademark of Harman International Industries, Inc. **68.** 2020 Avalon Hybrid XLE EPA 43 city/44 highway/44 combined mpg estimates. Actual mileage will vary. **69.** 2020 Avalon XLE EPA 22 city/32 highway/26 combined mpg estimates. Actual mileage will vary. **70.** Genuine Toyota Paint Protection Film by 3M™ is designed for specific sections of the vehicle most prone to chipping and may vary depending on vehicle model. Select applications may require an additional charge. Toyota Genuine Accessory Warranty only applies when installation is performed by a trained Toyota-approved installer. See Toyota dealer for details. **71.** The universal tablet holder is intended for passengers only. Drivers should always be sure to obey traffic regulations and maintain awareness of the road and traffic conditions at all times. Use of aftermarket accessories may pose an increased risk of injury to occupants in the event of an accident. Tablet sold separately.

Toyota strives to build vehicles to match customer interest and thus they typically are built with popular options and option packages. Not all options/packages are available separately and some may not be available in all regions of the country. See toyota.com for information about options/packages commonly available in your area. If you would prefer a vehicle without any or with different options, contact your dealer to check for current availability or the possibility of placing a special order.

Color(s) depicted may vary based on multiple factors, including ambient lighting and the format in which it is being viewed (e.g., computer, mobile device or print).

Some vehicles are shown with available equipment. Seatbelts should be worn at all times. Please do not allow passengers to ride in the cargo area. For details on vehicle specifications, standard features and available equipment in your area, contact your Toyota dealer. A vehicle with particular equipment may not be available at the dealership. Ask your Toyota dealer to help locate a specifically equipped vehicle.

All information presented herein is based on data available at the time of posting, is subject to change without notice and pertains specifically to mainland U.S.A. vehicles only. Vehicles shown may be prototypes and/or shown with options. Actual models may vary.



For Toyota Mobility program details, go to www.toyota.com/mobility or call the Toyota Customer Assistance Center at 1-800-331-4331