



TOYOTA

2021 Avalon

2021 AVALON

Give every day new meaning.

From here on out, every mile is what you make of it. Follow your aspirations in the 2021 Toyota Avalon, and never look back. Its low, wide stance and flowing roofline give it a sleek silhouette, while strong character lines add definition to its shape. It's a new level of refinement, and it's ready to face tomorrow head-on.



Touring shown in Wind Chill Pearl¹ with available Advanced Safety Package. Bottom left: Touring interior shown in Black SofTex² and Ultrasuede³ trim. Bottom right: Limited Hybrid shown in Opulent Amber with available Advanced Safety Package.



See numbered footnotes in Disclosures section.

PERFORMANCE

Purpose meets performance.

By taking advantage of the Toyota New Global Architecture (TNGA) platform, Avalon delivers a higher level of both handling and ride comfort. Inside, the inherent space of the cabin gives it the exceptional rear shoulder, knee and head room you've come to expect from Toyota's flagship sedan.

3.5L V6 engine

Avalon's 3.5-liter V6 unleashes 301 hp with efficiency in mind. Avalon has smart engineering, like D-4S direct injection and a Direct Shift 8-speed transmission, as well as an EPA-estimated rating of up to 32 hwy mpg.⁴



All-wheel-drive capability

Take the striking design of Avalon even further with the capability and performance of available All-Wheel Drive. By sending up to 50% of the torque to the rear wheels, you'll not only find more grip, but also more confidence, on the road.



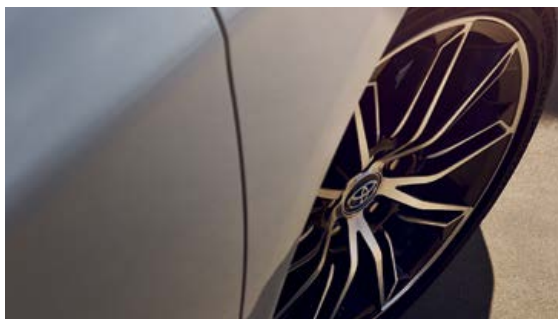
Limited AWD shown in Blueprint.
Bottom: Touring shown in Wind Chill Pearl¹ with available Advanced Safety Package.

Adaptive Variable Suspension

Avalon Touring's Adaptive Variable Suspension (AVS) provides virtually instantaneous damping adjustments to help maximize handling. This is furthered in Sport Mode with a higher range of damping force—for more stability on every road.



See numbered footnotes in Disclosures section.



Avalon XSE Nightshade

Avalon Nightshade Edition puts an emphasis on exterior style, with black accents all around. Black-painted 19-in. wheels, window trim, door handles and shark-fin antenna let you bring more attitude to every commute.

EXTERIOR

Designed to move you.

The sophisticated styling of Avalon artfully blends function and form. Every crease, every angle, every line is designed to make you feel something and push you to forge your own path. Take advantage of a powerful full-size sedan and do more than stand out from the crowd—lead the way.

19-in. sport wheels

Take on corners in style. Avalon Touring's machined and gloss-black-finished 19-in. wheels have been manufactured with depth and precision to complement its distinctive design.

Quad exhaust tips

Beneath the rear bumper, a gloss-black rear diffuser sits between the dual exhausts, further adding to Avalon Touring's aggressive look.



Limited interior shown in premium perforated Graphite leather-trimmed seating surfaces. Lower left, center and right: Limited interior shown.

INTERIOR

Daring in every detail.

The craftsmanship inside Avalon will make you never want to leave. Its clean, modern design flows effortlessly from the dash to the doors, while premium materials raise its level of luxury. And whether sitting in the front or rear, you'll appreciate the comfort and dedication that goes into every detail.

Avalon Limited interior

Authentic materials and available Cognac leather-trimmed seat surfaces welcome you inside the refined interior. Even road noise has been suppressed, for a quieter cabin.

Heated steering wheel

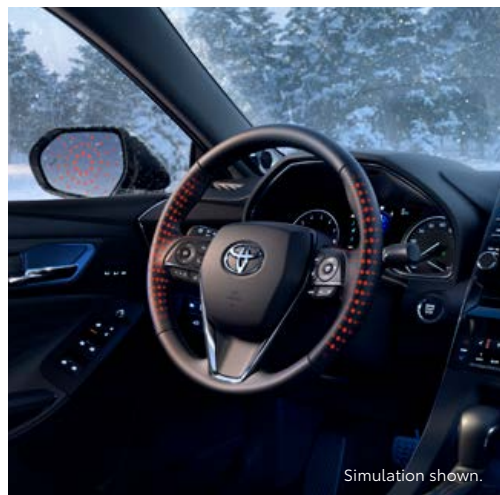
With the press of a button, Avalon's available heated steering wheel warms up to help you withstand the cold.

Real wood trim

Adding more warmth and luxury to Avalon Limited is real wood trim. Running across the dash and door panels, the wood accents highlight the quality that goes into this Toyota flagship vehicle.

Floating center stack

The large center instrument panel gives Avalon's interior a distinctive look. The 9-in. touchscreen display stands out and appears as if it were floating in front of the dash.



Simulation shown.





TRD shown in Ice Edge with Midnight Black Metallic roof.¹



TRD

Three letters. Endless dedication.

At Toyota Racing Development (TRD), we've been helping performance enthusiasts extract more performance from their Toyotas since 1979, and we have no intention of slowing down. We've put Avalon through the paces to make sure it deserves the TRD badge.

Unique TRD 19-in. alloy wheels with red-painted brake calipers

Unique looks that perform. Matte-black alloy wheels on Avalon TRD not only look good; they also reduce weight and enhance steering responsiveness. Large 12.9-in.-diameter front rotors and red-painted dual-piston front calipers give you impressive stopping power for every twist and turn.

Purposeful stance

Avalon TRD takes handling and striking design even further. TRD-tuned shocks help enhance body control, handling agility and steering precision. Thicker underbody braces increase torsional rigidity, and unique coil springs not only drop the vehicle .60 inches for a lower center of gravity, but also enhance the aero kit for an unmistakable, menacing look.

TRD cat-back dual exhaust

Press the start button, hit the gas and enjoy the aggressive sound of Avalon TRD's cat-back dual exhaust. Specially tuned to reduce back pressure, this system helps optimize efficiency and power. Polished stainless steel TRD exhaust tips finish off its athletic look.



See numbered footnotes in Disclosures section.



Limited Hybrid shown in Opulent Amber with available Advanced Safety Package. Lower right: Limited Hybrid interior shown in premium perforated Cognac leather trim.

HYBRID

Driven for more.

Avalon Hybrid is smarter without compromise. Its 2.5-liter Dynamic Force Engine and hybrid system seamlessly work together to help maximize fuel efficiency and can run entirely on the electric motors, under certain conditions and for short distances, when switched to EV Mode.⁵ With an impressive EPA-estimated mpg rating of up to 44 hwy,⁶ Avalon Hybrid is ready to go the distance.

44

EPA-est. mpg⁶



Avalon Hybrid interior

Authentic materials and available Cognac leather trim welcome you inside the refined interior. Even road noise has been suppressed, for a quieter cabin during every drive.

Amplify your drive.

Take advantage of smarter and convenient technologies designed to simplify your everyday life. From a suite of services that are there for you 24/7 to an immersive audio multimedia system, you can stay connected to your world.



Connected Services

Our available suite of Connected Services⁷ provides added convenience and peace of mind.

- ✓ **Safety Connect[®]**
Emergency SOS assistance and 24/7 Toyota Roadside Assistance.^{8, 9}
- ✓ **Service Connect**
Get personalized maintenance updates and vehicle health reports.¹⁰
- ✓ **Remote Connect**
Start, lock/unlock your doors and more, using your compatible smart device.¹¹
- ✓ **Wi-Fi Connect**
Turn your Toyota into a hotspot with 4G connectivity.¹²
- ✓ **Destination Assist**
24/7 live agent assistance to locate your next destination.¹³

To view included trial details, please visit toyota.com/connected-services.

Audio Multimedia

Make every drive more personal. By utilizing your vehicle's touchscreen display and audio multimedia capabilities, you'll always have access to what you want. Whether it's listening to your favorite playlist or finding the most scenic route to your destination, you'll enjoy the latest in connectivity and technologies that are all about you.



Apple CarPlay[®]

Bring along a familiar face. With Apple CarPlay^{®14} compatibility, you can use your compatible iPhone^{®15} with the audio multimedia system to get directions, make calls, send and receive messages, and listen to music — all while staying focused on your commute.



Android Auto[™]

Stay connected on the road. By pairing your compatible Android^{™16} phone with the audio multimedia system, Android Auto^{™17} lets you access your Google Assistant, get real-time traffic alerts, make and receive phone calls, listen to your favorite soundtrack and more.



SiriusXM[®] All Access 3-month trial subscription

Enjoy listening to what you want to hear. With SiriusXM^{®,18} you get the deepest variety of ad-free music, more sports coverage than anywhere else, exclusive talk channels, every kind of comedy, and the most complete news coverage.¹⁹



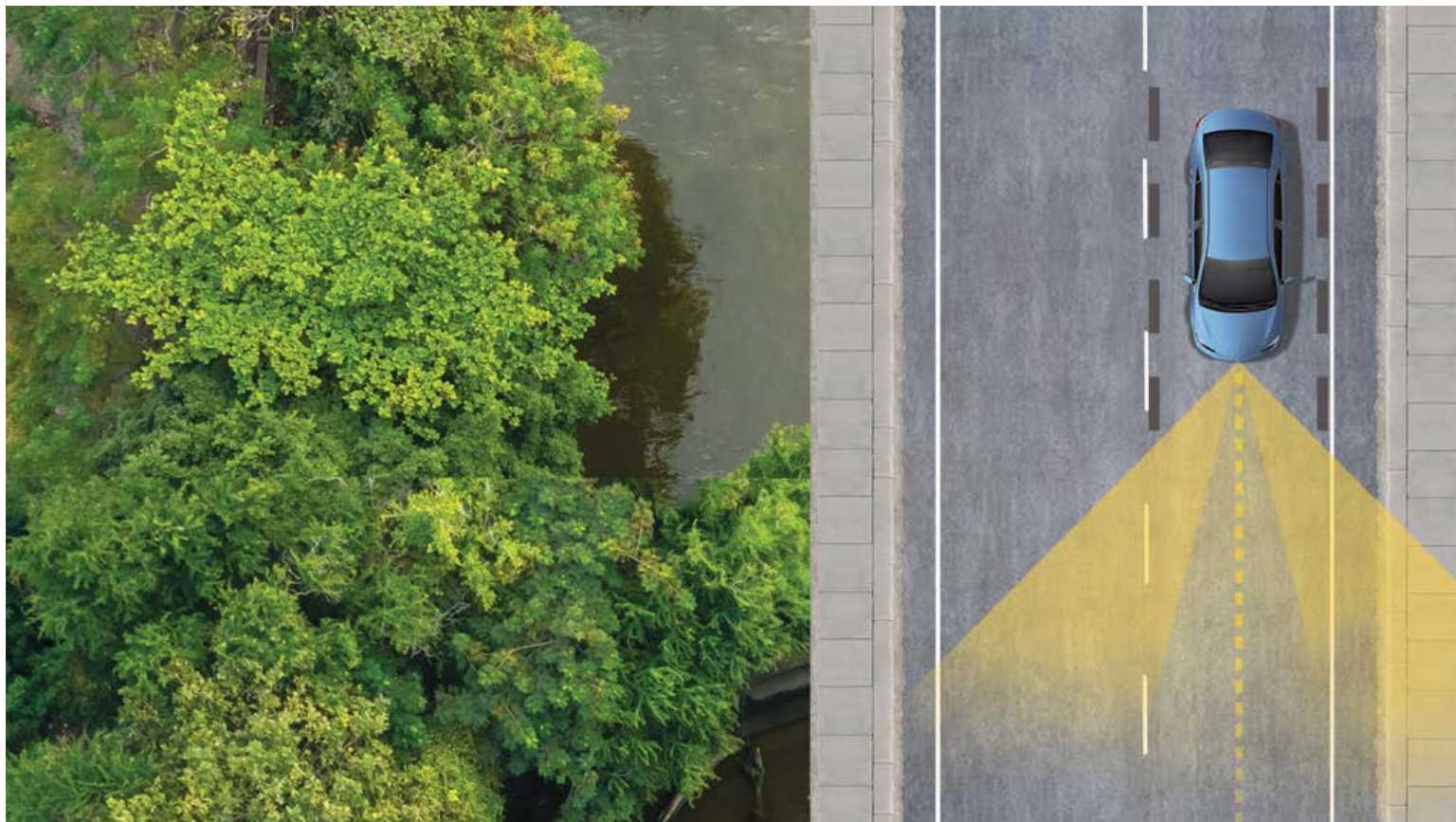
Amazon Alexa

Almost anywhere the road takes you, Amazon Alexa²⁰ connectivity follows. With a smartphone connection and the Toyota+Alexa app, all you have to do is ask Alexa to play music, listen to audiobooks, hear the news, check weather, control smart-home devices and more.



JBL[®]

Feel the difference and hear the truth. Designed specifically for Toyota, JBL^{®21} finely tunes each speaker to the interior of the vehicle. Just turn up the volume to hear the crisp, rich, vibrant sound come through.



TOYOTA SAFETY SENSE™ P (TSS-P)

Peace of mind comes standard.

Toyota Safety Sense™ P (TSS-P)²² is a bundle of active safety features included on many new Toyota vehicles at no additional cost. TSS-P's comprehensive features create in-the-moment safety designed to help protect you and your passengers from harm.



Pre-Collision System with Pedestrian Detection²³



Full-Speed Range Dynamic Radar Cruise Control²⁴



Lane Departure Alert with Steering Assist²⁵



Automatic High Beams²⁶

AVALON MODELS



XLE

Mechanical/Performance

- ✓ 3.5L V6 with 301 hp (FWD)
- ✓ Available 2.5L 4-cylinder with 203 hp (AWD)
- ✓ 8-speed Electronically Controlled automatic Transmission with intelligence (ECT-i) with sequential shift mode
- ✓ Normal, ECO and Sport drive modes
- ✓ Front-Wheel Drive (FWD)
- ✓ Available All-Wheel Drive (AWD)
- ✓ 22 city/32 highway/26 combined EPA-est. mpg⁴ (3.5L V6)
- ✓ Available 25 city/34 highway/28 combined EPA-est. mpg²⁷ (2.5L 4-cylinder)

Exterior Features

- ✓ LED reflector headlights and LED DRL with auto on/off feature
- ✓ LED taillights
- ✓ Front chrome grille surround with dark gray insert
- ✓ Color-keyed heated power outside mirrors with turn signal and blind spot warning indicators²⁸
- ✓ Acoustic noise-reducing windshield and driver and front passenger-side windows
- ✓ Dual exhaust with chrome tips
- ✓ 17-in. silver-painted alloy wheels

Interior Features

- ✓ Dual zone automatic climate control
- ✓ SofTex[®]-trimmed² seats
 - 8-way power-adjustable driver's seat with 2-way power lumbar support
 - 8-way adjustable passenger seats
 - Heated front seats
 - 60/40 split, folding rear seats
- ✓ 7-in. TFT Multi-Information Display (MID)
- ✓ Leather-trimmed steering wheel
- ✓ Smart Key System²⁹ with Push Button Start
- ✓ Hydrographic interior trim
- ✓ One USB media port, two USB-A charge ports and two USB-C charge ports³⁰

Audio Multimedia

- ✓ Audio Plus includes:
 - 9-in. touchscreen and eight speakers
 - Android Auto^{TM17} & Apple CarPlay^{®14} compatible
 - SiriusXM^{®18} with 3-month All Access trial subscription¹⁹
- ✓ Connected Services⁷ with Safety Connect^{®8} trial⁵⁰

Safety Features

- ✓ Toyota Safety SenseTM P (TSS-P)²²
- ✓ Star Safety SystemTM
- ✓ Ten airbags³¹
- ✓ Blind Spot Monitor (BSM)²⁸ with Rear Cross-Traffic Alert (RCTA)³²

Packages/Options

- ✓ Premium Audio includes:
 - Dynamic Navigation³³ with 3-year trial³⁴
 - 14 JBL^{®21} speakers including subwoofer and amplifier
- ✓ Moonroof Package includes:
 - Power tilt/slide moonroof with sliding sunshade
 - Qi-compatible wireless charging system³⁵



XSE Nightshade

Adds to or replaces features offered on XLE

Mechanical/Performance

- ✓ 3.5L V6 with 301 hp
- ✓ Front-Wheel Drive (FWD)
- ✓ Sport-tuned suspension
- ✓ 22 city/31 highway/25 combined EPA-est. mpg²⁷

Exterior Features

- ✓ LED reflector headlights with smoked chrome bezels and on/off feature
- ✓ Front piano-black grille with sport mesh insert
- ✓ Gloss-black rear spoiler
- ✓ Gloss-black outside mirrors
- ✓ Black door handles
- ✓ Power tilt/slide moonroof with sliding sunshade
- ✓ Gloss-black window trim
- ✓ Dual exhaust with quad chrome tips
- ✓ Intake Sound Generator (ISG)
- ✓ 18-in. dark-gray-painted alloy wheels

Interior Features

- ✓ SofTex[®]-trimmed² seats with perforation and Ultrasuede^{®3} trim
- ✓ Leather-trimmed steering wheel with paddle shifters
- ✓ Aluminum pedal covers
- ✓ Genuine aluminum interior trim
- ✓ Frameless auto-dimming rearview mirror with HomeLink^{®36} universal transceiver
- ✓ Ambient interior lighting
- ✓ Qi-compatible wireless charging system³⁵

Audio Multimedia

- ✓ Audio Plus includes:
 - 9-in. touchscreen and eight speakers
 - Android Auto^{TM17} & Apple CarPlay^{®14} compatible
 - SiriusXM^{®18} with 3-month All Access trial subscription¹⁹
- ✓ Connected Services⁷ with Safety Connect^{®8} trial⁵⁰

Safety Features

- ✓ Toyota Safety SenseTM P (TSS-P)²²
- ✓ Star Safety SystemTM
- ✓ Ten airbags³¹
- ✓ Blind Spot Monitor (BSM)²⁸ with Rear Cross-Traffic Alert (RCTA)³²

Packages/Options

- ✓ Premium Audio includes:
 - Dynamic Navigation³³ with 3-year trial³⁴
 - 14 JBL^{®21} speakers including subwoofer and amplifier
 - Active Noise Control (ANC) and Engine Sound Enhancement (ESE)



TRD

Adds to or replaces features offered on XLE

Mechanical/Performance

- ✓ 3.5L V6 with 301 hp
- ✓ Front-Wheel Drive (FWD)
- ✓ TRD track-tuned suspension
- ✓ Ventilated 12.9-in. front disc brakes with dual-piston calipers; solid 11.06-in. rear disc brakes; red-painted front and rear calipers
- ✓ 21 city/30 highway/25 combined EPA-est. mpg²⁷

Exterior Features

- ✓ LED reflector headlights with smoked chrome bezels and on/off feature
- ✓ Front piano-black grille with sport mesh insert
- ✓ TRD gloss-black front splitters, side aero skirts and rear diffuser with red pinstriping
- ✓ Gloss-black outside mirrors
- ✓ Power tilt/slide moonroof with sliding sunshade
- ✓ TRD gloss-black rear spoiler
- ✓ Midnight Black Metallic roof
- ✓ Gloss-black window trim
- ✓ TRD cat-back dual exhaust with polished stainless steel tips
- ✓ Intake Sound Generator (ISG)
- ✓ 19-in. TRD matte-black alloy wheels

Interior Features

- ✓ SofTex[®]-trimmed² seats with perforation and Ultrasuede^{®3} trim
 - Red stitched TRD headrest logo
- ✓ Leather-trimmed steering wheel with red stitching and paddle shifters
- ✓ Black leather shift knob with red stitching and TRD embossed logo
- ✓ Aluminum pedal covers
- ✓ Genuine aluminum interior trim and red stitched accents
- ✓ Avalon TRD floor mats³⁷
- ✓ HomeLink^{®36} universal transceiver
- ✓ Qi-compatible wireless charging system³⁵

Safety Features

- ✓ Toyota Safety SenseTM P (TSS-P)²²
- ✓ Star Safety SystemTM
- ✓ Ten airbags³¹
- ✓ Blind Spot Monitor (BSM)²⁸ with Rear Cross-Traffic Alert (RCTA)³²

Packages/Options

- ✓ Premium Audio includes:
 - Dynamic Navigation³³ with 3-year trial³⁴
 - 14 JBL^{®21} speakers including subwoofer and amplifier
- ✓ 19-in. TRD matte-black alloy wheels with P235/40R19 summer tires

AVALON MODELS



Touring

Adds to or replaces features offered on XLE

Mechanical/Performance

- ✓ 3.5L V6 with 301 hp
- ✓ Normal, ECO, Sport and Sport+ drive modes
- ✓ Front-Wheel Drive (FWD)
- ✓ Sport-tuned suspension
- ✓ Adaptive Variable Suspension (AVS)
- ✓ 22 city/31 highway/25 combined EPA-est. mpg²⁷

Exterior Features

- ✓ LED headlights with smoked chrome bezels, on/off feature and Adaptive Cornering Lights
- ✓ LED taillights with dynamic turn signals
- ✓ Front piano-black grille with sport mesh insert
- ✓ Gloss-black heated power outside mirrors with memory feature and driver's-side auto-dimming
- ✓ Power tilt/slide moonroof with sliding sunshade
- ✓ Gloss-black rear spoiler
- ✓ Dual exhaust with quad chrome tips
- ✓ Intake Sound Generator (ISG)
- ✓ 19-in. black-painted machined-finish alloy wheels

Interior Features

- ✓ SofTex[®]-trimmed² seats with perforation and Ultrasuede[®] trim
 - 8-way power-adjustable driver's seat with 4-way power lumbar support
 - 8-way adjustable passenger seats with 4-way power lumbar support
 - Heated and ventilated front seats
 - Heated rear seats
- ✓ Leather-trimmed heated steering wheel with paddle shifters
- ✓ 10-in. color Head-Up Display (HUD)
- ✓ Aluminum pedal covers
- ✓ Genuine aluminum interior trim
- ✓ Active Noise Control (ANC)
- ✓ Engine Sound Enhancement (ESE)
- ✓ HomeLink[®]³⁶ universal transceiver
- ✓ Qi-compatible wireless charging system³⁵

Audio Multimedia

- ✓ Premium Audio includes:
 - 9-in. touchscreen and 14 JBL[®]²¹ speakers including subwoofer and amplifier
 - Dynamic Navigation³³ with 3-year trial³⁴
 - Android Auto[™]¹⁷ & Apple CarPlay[®]¹⁴ compatible
 - SiriusXM[®]¹⁸ with 3-month All Access trial subscription¹⁹
- ✓ Connected Services⁷ with Safety Connect[®]⁸⁸ trial⁵⁰

Safety Features

- ✓ Toyota Safety Sense[™] P (TSS-P)²²
- ✓ Star Safety System[™]
- ✓ Ten airbags³¹
- ✓ Blind Spot Monitor (BSM)²⁸ with Rear Cross-Traffic Alert (RCTA)³²

Packages/Options

- ✓ Advanced Safety Package includes:
 - Bird's Eye View Camera³⁸ with Perimeter Scan
 - Intelligent Clearance Sonar (ICS)³⁹ with Rear Cross-Traffic Braking (RCTB)⁴⁰



Limited

Adds to or replaces features offered on XLE

Mechanical/Performance

- ✓ 3.5L V6 with 301 hp (FWD)
- ✓ Available 2.5L 4-cylinder with 203 hp (AWD)
- ✓ Front-Wheel Drive (FWD)
- ✓ Available All-Wheel Drive (AWD)
- ✓ 22 city/31 highway/25 combined EPA-est. mpg²⁷ (3.5L V6)
- ✓ Available 25 city/34 highway/28 combined EPA-est. mpg²⁷ (2.5L 4-cylinder)

Exterior Features

- ✓ LED headlights with smoked chrome bezels, on/off feature and Adaptive Cornering Lights
- ✓ LED taillights with dynamic turn signals
- ✓ Color-keyed heated power outside mirrors with memory feature and driver's-side auto-dimming
- ✓ 18-in. Super Chrome alloy wheels

Interior Features

- ✓ Premium leather-trimmed seats
 - 8-way power-adjustable driver's seat with 4-way power lumbar support
 - 8-way adjustable passenger seats with 4-way power lumbar support
 - Heated and ventilated front seats
 - Heated rear seats
- ✓ Premium leather-trimmed heated steering wheel
- ✓ 10-in. color Head-Up Display (HUD)
- ✓ Genuine wood interior trim
- ✓ Frameless auto-dimming rearview mirror
- ✓ Ambient interior lighting
- ✓ Qi-compatible wireless charging system³⁵

Audio Multimedia

- ✓ Premium Audio includes:
 - 9-in. touchscreen and 14 JBL[®]²¹ speakers including subwoofer and amplifier
 - Dynamic Navigation³³ with 3-year trial³⁴
 - Android Auto[™]¹⁷ & Apple CarPlay[®]¹⁴ compatible
 - SiriusXM[®]¹⁸ with 3-month All Access trial subscription¹⁹
- ✓ Connected Services⁷ with Safety Connect[®]⁸⁸ trial⁵⁰

Safety Features

- ✓ Toyota Safety Sense[™] P (TSS-P)²²
- ✓ Star Safety System[™]
- ✓ Ten airbags³¹
- ✓ Blind Spot Monitor (BSM)²⁸ with Rear Cross-Traffic Alert (RCTA)³²

Packages/Options

- ✓ Advanced Safety Package includes:
 - Bird's Eye View Camera³⁸ with Perimeter Scan
 - Intelligent Clearance Sonar (ICS)³⁹ with Rear Cross-Traffic Braking (RCTB)⁴⁰
- ✓ Appearance Package includes:
 - 19-in. Super Chrome machined-finish alloy wheels
 - Chrome exterior door handles
 - Bird's Eye View Camera³⁸ with Perimeter Scan
 - Intelligent Clearance Sonar (ICS)³⁹ with Rear Cross-Traffic Braking (RCTB)⁴⁰

AVALON MODELS



XLE Hybrid

Includes these key features

Mechanical/Performance

- ✓ Hybrid engine: 2.5L 4-cylinder with 215 net hp
- ✓ Electronically controlled Continuously Variable Transmission (ECVT) with sequential shift mode
- ✓ Normal, ECO, EV⁵ and Sport drive modes
- ✓ Front-Wheel Drive (FWD)
- ✓ 43 city/44 highway/44 combined EPA-est. mpg⁶

Exterior Features

- ✓ LED reflector headlights and LED DRL with auto on/off feature
- ✓ LED taillights
- ✓ Front chrome grille surround with dark gray insert and active grille shutters
- ✓ Color-keyed heated power outside mirrors with turn signal and blind spot warning²⁸ indicators
- ✓ Acoustic noise-reducing windshield and driver and front passenger-side windows
- ✓ 17-in. silver-painted alloy wheels

Interior Features

- ✓ Dual zone automatic climate control
- ✓ SofTex[®]-trimmed² seats
 - 8-way power-adjustable driver's seat with 2-way power lumbar support
 - 8-way adjustable passenger seats
 - Heated front seats
 - 60/40 split, folding rear seats
- ✓ 7-in. TFT Multi-Information Display (MID)
- ✓ Leather-trimmed steering wheel
- ✓ Smart Key System²⁹ with Push Button Start
- ✓ Hydrographic interior trim
- ✓ One USB media port, two USB-A charge ports and two USB-C charge ports³⁰

Audio Multimedia

- ✓ Audio Plus includes:
 - 9-in. touchscreen and eight speakers
 - Android Auto^{TM17} & Apple CarPlay^{®14} compatible
 - SiriusXM^{®18} with 3-month All Access trial subscription¹⁹
- ✓ Connected Services⁷ with Safety Connect^{®8} trial⁵⁰

Safety Features

- ✓ Toyota Safety SenseTM P (TSS-P)²²
- ✓ Star Safety SystemTM
- ✓ Ten airbags³¹
- ✓ Blind Spot Monitor (BSM)²⁸ with Rear Cross-Traffic Alert (RCTA)³²

Packages/Options

- ✓ Premium Audio includes:
 - Dynamic Navigation³³ with 3-year trial³⁴
 - 14 JBL^{®21} speakers including subwoofer and amplifier
- ✓ Moonroof Package includes:
 - Power tilt/slide moonroof with sliding sunshade
 - Qi-compatible wireless charging system³⁵



XSE Hybrid

Adds to or replaces features offered on XLE Hybrid

Mechanical/Performance

- ✓ Hybrid engine with 215 net hp
- ✓ Sport-tuned suspension
- ✓ 43 city/43 highway/43 combined EPA-est. mpg²⁷

Exterior Features

- ✓ LED reflector headlights with smoked chrome bezels and on/off feature
- ✓ Front piano-black grille with sport mesh insert
- ✓ Gloss-black rear spoiler
- ✓ Gloss-black outside mirrors
- ✓ Power tilt/slide moonroof with sliding sunshade
- ✓ 18-in. dark-gray-painted alloy wheels

Interior Features

- ✓ SofTex[®]-trimmed² seats with perforation and Ultrasuede^{®3} trim
- ✓ Leather-trimmed steering wheel with paddle shifters
- ✓ Aluminum pedal covers
- ✓ Genuine aluminum interior trim
- ✓ HomeLink^{®36} universal transceiver
- ✓ Qi-compatible wireless charging system³⁵

Safety Features

- ✓ Toyota Safety SenseTM P (TSS-P)²²
- ✓ Star Safety SystemTM
- ✓ Ten airbags³¹
- ✓ Blind Spot Monitor (BSM)²⁸ with Rear Cross-Traffic Alert (RCTA)³²

Packages/Options

- ✓ Premium Audio includes:
 - Dynamic Navigation³³ with 3-year trial³⁴
 - 14 JBL^{®21} speakers including subwoofer and amplifier



Limited Hybrid

Adds to or replaces features offered on XLE Hybrid

Mechanical/Performance

- ✓ Hybrid engine with 215 net hp
- ✓ 43 city/43 highway/43 combined EPA-est. mpg²⁷

Exterior Features

- ✓ LED headlights with smoked chrome bezels, on/off feature and Adaptive Cornering Lights
- ✓ LED taillights with dynamic turn signals
- ✓ Color-keyed heated power outside mirrors with memory feature and driver's-side auto-dimming
- ✓ 18-in. Super Chrome alloy wheels

Interior Features

- ✓ Premium leather-trimmed seats
 - 8-way power-adjustable driver's seat with 4-way power lumbar support
 - 8-way adjustable passenger seats with 4-way power lumbar support
 - Heated and ventilated front seats
 - Heated rear seats
- ✓ Premium leather-trimmed heated steering wheel
- ✓ 10-in. color Head-Up Display (HUD)
- ✓ Genuine wood interior trim
- ✓ Frameless auto-dimming rearview mirror
- ✓ Ambient interior lighting

Audio Multimedia

- ✓ Premium Audio includes:
 - 9-in. touchscreen and 14 JBL^{®21} speakers including subwoofer and amplifier
 - Dynamic Navigation³³ with 3-year trial³⁴
 - Android Auto^{TM17} & Apple CarPlay^{®14} compatible
 - SiriusXM^{®18} with 3-month All Access trial subscription¹⁹
- ✓ Connected Services⁷ with Safety Connect^{®8} trial⁵⁰

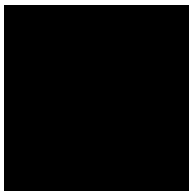
Safety Features

- ✓ Toyota Safety SenseTM P (TSS-P)²²
- ✓ Star Safety SystemTM
- ✓ Ten airbags³¹
- ✓ Blind Spot Monitor (BSM)²⁸ with Rear Cross-Traffic Alert (RCTA)³²

Packages/Options

- ✓ Advanced Safety Package includes:
 - Bird's Eye View Camera³⁸ with Perimeter Scan
 - Intelligent Clearance Sonar (ICS)³⁹ with Rear Cross-Traffic Braking (RCTB)⁴⁰
- ✓ Appearance Package includes:
 - 19-in. Super Chrome machined-finish alloy wheels
 - Chrome exterior door handles
 - Bird's Eye View Camera³⁸ with Perimeter Scan
 - Intelligent Clearance Sonar (ICS)³⁹ with Rear Cross-Traffic Braking (RCTB)⁴⁰

AVALON COLORS & TRIMS



Midnight Black
Metallic



Blueprint



Supersonic Red¹



Ruby Flare Pearl¹



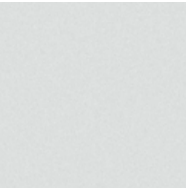
Opulent Amber



Harbor Gray
Metallic

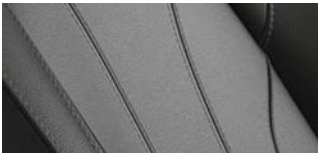


Celestial Silver
Metallic



Wind Chill Pearl¹

XLE SofTex^{®2} trim shown in Black



Graphite



Harvest Beige

XSE and Touring perforated
SofTex^{®2} trim with Ultrasuede^{®3}
shown in Black



Touring perforated
Cognac/Black leather trim



Limited premium perforated
Cognac leather trim

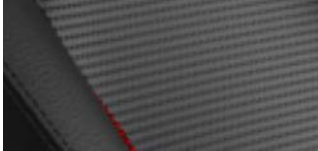


Graphite



Black

TRD perforated SofTex^{®2} with
Ultrasuede^{®3} trim shown in
Black



Available Midnight Black Metallic roof¹ for TRD models



Wind Chill Pearl¹



Ice Edge¹

AVALON WHEELS



XLE and XLE Hybrid
17-in. silver-painted
alloy wheels



XSE and Touring
19-in. black-painted
machined-finish alloy wheels



Limited and Limited Hybrid
18-in. Super Chrome alloy wheels



XSE Hybrid
18-in. dark-gray-painted
alloy wheels



TRD
19-in. matte-black
alloy wheels



XSE Nightshade
19-in. black-painted alloy wheels
with P235/40R19 tires

AVALON ACCESSORIES

This is a great way to add extra personality to your Avalon. Not every accessory is available in your area, so for a complete list of accessories, go to toyota.com/avalon/accessories.



Door edge guards



Alloy wheel locks



Body side moldings



TRD 19-in. alloy wheels



All-weather floor liners³⁷



Cargo tray⁴¹



TRD shift knob



TRD carpet floor mats³⁷



Mudguards

WARRANTIES

Every Toyota Car, Truck and SUV is built to exceptional standards. And that's not idle boasting. We back it up with these Limited Warranty Coverages:

Basic: 36 months/36,000 miles (all components other than normal wear and maintenance items).

Hybrid-Related Component Coverage: Hybrid-related components, including the battery control module, hybrid control module and inverter with converter, are covered for 8 years/100,000 miles. Refer to applicable *Warranty and Maintenance Guide* for details.

Hybrid Battery: HV battery is covered for 10 years or 150,000 miles, whichever comes first. Warranty coverage is subject to terms and conditions. Refer to applicable *Warranty and Maintenance Guide* for details.

Powertrain: 60 months/60,000 miles (engine, transmission/transaxle, drive system, seatbelts and airbags).

Rust-Through: 60 months/unlimited miles (corrosion perforation of sheet metal).

Emissions: Coverages vary under Federal and California regulations. Refer to applicable *Warranty and Maintenance Guide* for details.

Accessories: For Genuine Toyota Accessories purchased at the time of the new vehicle purchase, the Toyota Accessory Warranty coverage is in effect for 36 months/36,000 miles from the vehicle's in-service date, which is the same coverage as the Toyota New Vehicle Limited Warranty.

For Genuine Toyota Accessories purchased after the new vehicle purchase the coverage is 12 months, regardless of mileage, from the date the accessory was installed on the vehicle, or the remainder of any applicable new vehicle warranty, whichever provides greater coverage.

You may be eligible for transportation assistance if it's necessary that your vehicle be kept overnight for repairs covered under warranty. Please see your authorized Toyota dealership for further details.

For complete details about Toyota's warranties, please visit www.toyota.com, refer to the applicable *Warranty and Maintenance Guide* or see your Toyota dealer.

AVALON FEATURES⁴²

S = Standard O = Optional P = Available as part of a package

| Exterior | XLE | XLE AWD | XSE Nightshade | Touring | Limited | Limited AWD | XLE Hybrid | XSE Hybrid | Limited Hybrid | TRD |
|--|-----|------------|-------------------|---------|---------|----------------|---------------|---------------|-------------------|-----|
| LED reflector headlights and LED Daytime Running Lights (DRL) with auto on/off feature | S | S | | | | | S | | | |
| LED reflector headlights with smoked chrome bezels and on/off feature; LED Daytime Running Lights (DRL) with auto on/off feature | | | S | | | | | S | | S |
| LED headlights with smoked chrome bezels and on/off feature; fully integrated LED Daytime Running Lights (DRL) with auto on/off feature and laser-ablation design with dynamic auxiliary turn signals, Adaptive Cornering Lights | | | | S | S | S | | | S | |
| LED taillights | S | S | S | | | | S | S | | S |
| LED taillights with laser-ablation design and dynamic auxiliary turn signals | | | | S | S | S | | | S | |
| Front chrome grille surround with dark gray insert | S | S | | | S | S | | | | |
| Front chrome grille surround with dark gray insert and active grille shutter | | | | | | | S | | S | |
| Front piano-black grille with sport mesh insert | | | S | S | | | | | | S |
| Front piano-black grille with sport mesh insert and active grille shutter | | | | | | | | S | | |
| TRD gloss-black front splitters, side aero skirts, and rear diffuser with red pinstriping | | | | | | | | | | S |
| Gloss-black window trim | | | S | | | | | | | S |
| Black door handles | | | S | | | | | | | |
| Color-keyed door handles | S | S | | S | S | S | S | S | S | S |
| Chrome door handles | | | | | | | P | P | P | |
| Black shark-fin antenna | | | S | | | | | | | |
| Color-keyed shark-fin antenna | S | S | | S | S | S | S | S | S | S |
| Color-keyed heated power outside mirrors with turn signal and blind spot warning ²⁸ indicators | S | S | | | | | S | | | |
| Color-keyed heated power outside mirrors with turn signal and blind spot warning ²⁸ indicators, memory features and driver's-side auto-dimming | | | | | S | S | | | S | |
| Gloss-black heated power outside mirrors with turn signal and blind spot warning ²⁸ indicators, memory feature and driver's-side auto-dimming | | | | S | | | | | | |
| Gloss-black heated power outside mirrors with turn signal and blind spot warning ²⁸ indicators | | | S | | | | | S | | S |
| Aerodynamic front tangential venting | S | S | S | S | S | S | S | S | S | S |
| Power tilt/slide moonroof with sliding sunshade | P | P | S | S | S | S | P | S | S | S |
| 17-in. silver-painted alloy wheels with P215/55R17 tires | S | S | | | | | S | | | |
| 18-in. Super Chrome alloy wheels with P235/45R18 tires | | | | | S | S | | | S | |
| 19-in. black-painted machined-finish alloy wheels with P235/40R19 tires | | | | S | | | | | | |
| 19-in. black-painted alloy wheels with P235/40R19 tires | | | S | | | | | | | |
| 18-in. dark-gray-painted alloy wheels with P235/45R18 tires | | | | | | | | S | | |
| 19-in. TRD matte-black alloy wheels with P235/40R19 tires | | | | | | | | | | S |
| 19-in. Super Chrome machined-finish alloy wheels with P235/40R19 tires | | | | | | | P | P | P | |
| Matte-black center cap with red TRD logo | | | | | | | | | | S |
| Washer-linked variable intermittent windshield wipers | S | S | S | S | S | S | S | S | S | S |
| Acoustic noise-reducing windshield and driver and front passenger-side windows | S | S | S | S | S | S | S | S | S | S |
| High Solar Energy-Absorbing (HSEA) glass | S | S | S | S | S | S | S | S | S | S |
| Gloss-black rear spoiler | | | S | S | | | | S | | |
| TRD gloss-black rear spoiler | | | | | | | | | | S |
| Black "AVALON" lettering | | | | S | | | | | | |
| Red TRD badge | | | | | | | | | | S |
| TRD cat-back dual exhaust with polished stainless steel tips | | | | | | | | | | S |
| Dual exhaust with chrome tips | S | S | | | S | S | | | | |
| Dual exhaust with quad chrome tips | | | S | S | | | | | | |
| Single hidden exhaust | | | | | | | S | S | S | |
| Intake Sound Generator (ISG) | | | S | S | | | | | | S |
| Sport sound-tuned exhaust | | | P | S | | | | | | |

AVALON FEATURES

S = Standard O = Optional P = Available as part of a package

| Interior | XLE | XLE AWD | XSE Nightshade | Touring | Limited | Limited AWD | XLE Hybrid | XSE Hybrid | Limited Hybrid | TRD |
|--|-----|------------|-------------------|---------|---------|----------------|---------------|---------------|-------------------|-----|
| Dual zone automatic climate control with air filter and rear-seat vents | S | S | S | S | S | S | | | | S |
| Dual zone automatic climate control with air filter, electric compressor, humidity sensor and rear-seat vents | | | | | | | S | S | S | |
| Audio Plus — includes 9-in. touchscreen, eight speakers, audio jack, USB 2.0 media port ³⁰ with iPod® ¹⁵ connectivity and control, voice recognition, ⁴⁴ hands-free phone capability and music streaming ⁴⁵ via Bluetooth® ⁴⁵ wireless technology, Apple CarPlay® ¹⁴ & Amazon Alexa ²⁰ compatible, Scout® GPS Link ⁴⁶ compatible with up to 3-year trial, ⁴⁷ Siri® Eyes Free, ⁴⁸ HD Radio, ^{TM49} SiriusXM® ¹⁸ with 3-month All Access trial subscription; ¹⁹ Connected Services ⁷ — Safety Connect® ⁸⁸ with 3-year trial, ⁵⁰ Service Connect ¹⁰ with 3-year trial, ⁵¹ Remote Connect ¹¹ with 6-month trial, ⁵² Wi-Fi Connect Powered by Verizon ¹² with up to 2 GB within 6-month trial. ⁵³ See toyota.com/audio-multimedia for details. | S | S | S | | | | S | S | | S |
| Premium Audio, Dynamic Navigation ³³ and JBL® w/Clari-Fi® ²¹ — includes 9-in. touchscreen, 14 speakers including subwoofer and 1200W amplifier, USB 2.0 media port, ³⁰ Dynamic Navigation ³³ with 3-year trial, ³⁴ Dynamic POI Search, Dynamic Voice Recognition, ⁵⁴ hands-free phone capability and music streaming ⁴⁵ via Bluetooth® ⁴⁵ wireless technology, Apple CarPlay® ¹⁴ & Amazon Alexa ²⁰ compatible, Siri® Eyes Free, ⁴⁸ HD Radio, ^{TM49} SiriusXM® ¹⁸ with 3-month All Access trial subscription; ¹⁹ Connected Services ⁷ — Safety Connect® ⁸⁸ with 3-year trial, ⁵⁰ Service Connect ¹⁰ with 3-year trial, ⁵¹ Remote Connect ¹¹ with 6-month trial, ⁵² Wi-Fi Connect Powered by Verizon ¹² with up to 2 GB within 6-month trial, ⁵³ Destination Assist ¹³ with 6-month trial; ⁵⁵ See toyota.com/audio-multimedia for details. | O | O | O | S | S | S | O | O | S | O |
| Auto engine shutoff | S | S | S | S | S | S | S | S | S | S |
| Active Noise Control (ANC) | | | P | S | | | | | | |
| Engine Sound Enhancement (ESE) | | | P | S | | | | | | |
| Qi-compatible wireless smartphone charging ³⁵ | P | P | S | S | S | S | P | S | S | S |
| Integrated backup camera ⁵⁶ with dynamic gridlines | S | S | S | S | S | S | S | S | S | S |
| 7-in. TFT Multi-Information Display (MID) with customizable settings, odometer, outside temperature, fuel economy and trip information, current/average fuel economy, distance to empty, average speed, trip distance with timer, TPMS; ⁵⁷ scheduled maintenance and warning messages | S | S | S | S | S | S | | | | |
| 7-in. TFT Multi-Information Display (MID) with TRD start-up animation, customizable settings, odometer, outside temperature, fuel economy and trip information, current/average fuel economy, distance to empty, average speed, trip distance with timer, TPMS; ⁵⁷ scheduled maintenance, compass and warning messages | | | | | | | | | | S |
| 7-in. TFT Multi-Information Display (MID) with customizable settings, odometer, outside temperature, fuel economy and trip information, current/average fuel economy, distance to empty, average speed, hybrid system information, energy monitor, TPMS; ⁵⁷ scheduled maintenance and warning messages | | | | | | | S | S | S | |
| SofTex®-trimmed ² heated front seats; 8-way adjustable driver's seat with 2-way power lumbar support; 8-way adjustable passenger seats | S | S | | | | | S | | | |
| SofTex®-trimmed ² seats with perforation and Ultrasuede® ³ trim on heated front seats; 8-way adjustable driver's seat with 2-way power lumbar support; 8-way adjustable passenger seats | | | S | | | | | S | | |
| SofTex®-trimmed ² seats with red seatbelts, stitching and fabric inserts, red stitched TRD headrest logo, perforation and Ultrasuede® ³ trim on heated front seats, 8-way adjustable driver's seat with 2-way power lumbar support; 8-way adjustable passenger seats | | | | | | | | | | S |
| Premium leather-trimmed heated and ventilated front seats; 8-way adjustable driver's seat with 4-way power lumbar support and memory function; 8-way adjustable passenger seats with 4-way power lumbar support | | | | | S | S | | | S | |
| SofTex®-trimmed ² seats with perforation and Ultrasuede® ³ trim on heated and ventilated front seats; 8-way adjustable driver's seat with 4-way power lumbar support and memory function; 8-way adjustable passenger seats with 4-way power lumbar support | | | | S | | | | | | |
| 60/40 split, folding rear seats with two adjustable and one fixed headrest, and armrest with cup holders | S | S | S | S | S | S | S | S | S | S |

See numbered footnotes in Disclosures section.

AVALON FEATURES

S = Standard O = Optional P = Available as part of a package

| Interior (continued) | XLE | XLE AWD | XSE Nightshade | Touring | Limited | Limited AWD | XLE Hybrid | XSE Hybrid | Limited Hybrid | TRD |
|---|-----|------------|-------------------|---------|---------|----------------|---------------|---------------|-------------------|-----|
| Heated rear seats | | | | S | S | S | | | S | |
| Full-Speed Range Dynamic Radar Cruise Control (DRCC) ²⁴ | S | S | S | S | S | S | S | S | S | S |
| Tilt/telescopic leather-wrapped steering wheel with Multi-Information Display (MID), audio and Bluetooth ^{®45} hands-free and voice-command controls | S | | | | | | S | | | |
| Tilt/telescopic premium leather-wrapped steering wheel, Multi-Information Display (MID), paddle shifters, audio, Bluetooth ^{®45} hands-free and voice-command controls | | | S | | | | | S | | |
| Tilt/telescopic premium leather steering wheel with red stitching, Multi-Information Display (MID), paddle shifters, audio, Bluetooth ^{®45} hands-free and voice-command controls | | | | | | | | | | S |
| Heated tilt/telescopic premium leather-wrapped steering wheel with memory function, Multi-Information Display (MID), paddle shifters, audio, Bluetooth ^{®45} hands-free and voice-command controls | | | | S | | | | | | |
| Heated tilt/telescopic premium leather steering wheel with Multi-Information Display (MID), audio, Bluetooth ^{®45} hands-free and voice-command controls | | S | | | | | | | | |
| Heated tilt/telescopic premium leather-wrapped steering wheel with memory function, Multi-Information Display (MID), audio, Bluetooth ^{®45} hands-free and voice-command controls | | | | | S | S | | | S | |
| 3-mode switch (ECO, Normal, Sport) | S | S | S | | S | S | | | | S |
| 4-mode switch (EV ⁵ , ECO, Normal, Sport) | | | | | | | S | S | S | |
| 4-mode switch (ECO, Normal/Custom, Sport, Sport+) | | | | S | | | | | | |
| 10-in. color Head-Up Display (HUD) with customizable settings, speedometer, navigation, ⁵⁸ shift position, compass, TSS-P ²² indicators, audio, phone, outside temperature and adjustable brightness | | | | S | S | S | | | | |
| 10-in. color Head-Up Display (HUD) with customizable settings, speedometer, navigation, ⁵⁸ shift position, compass, TSS-P ²² indicators, audio, phone, outside temperature, Hybrid System Indicator and adjustable brightness | | | | | | | | | S | |
| Bird's Eye View Camera ³⁸ with Perimeter Scan, 360-degree Overhead View in drive and reverse, and Curb View | | | | P | P | P | | | P | |
| Hydrographic interior trim | S | S | | | | | S | | | |
| Genuine aluminum interior trim | | | S | S | | | | S | | |
| Genuine aluminum interior trim with red stitched accents | | | | | | | | | | S |
| Genuine wood interior trim | | | | | S | S | | | S | |
| Black leather shift knob with red stitching and debossed TRD logo | | | | | | | | | | S |
| Black floor mats ³⁷ with red "AVALON TRD" logo and red outline | | | | | | | | | | S |
| Aluminum pedal covers | | | S | S | | | | S | | S |
| Ambient lighting for cup holders, side of console and door handles | | | | S | S | S | | | S | |
| Smart Key System ²⁹ on front doors and trunk with Push Button Start, remote keyless entry system and remote illuminated entry | S | S | S | S | S | S | S | S | S | S |
| Power windows with 4-window auto up/down, jam protection and retained-power features | S | S | S | S | S | S | S | S | S | S |
| Rear window defogger with timer | S | S | S | S | S | S | S | S | S | S |
| Power door locks with shift-linked automatic locking feature with anti-lockout feature | S | S | S | S | S | S | S | S | S | S |
| Auto-dimming rearview mirror | S | S | | | | | S | | | |
| Auto-dimming rearview mirror and HomeLink ^{®36} universal transceiver | | | S | | | | | S | | S |
| Frameless auto-dimming rearview mirror and HomeLink ^{®36} universal transceiver | | | | S | S | S | | S | S | |
| Overhead console with maplights and Safety Connect ^{®58} button | S | S | S | S | S | S | S | S | S | S |
| Covered center console, armrest and storage | S | S | S | S | S | S | S | S | S | S |
| One 12V auxiliary power outlet ⁵⁹ | S | S | S | S | S | S | S | S | S | S |
| Two USB-A charge ports ³⁰ | S | S | S | S | S | S | S | S | S | S |
| Two USB-C charge ports ³⁰ | S | S | S | S | S | S | S | S | S | S |
| Dual sun visors with sliding extensions and illuminated vanity mirrors | S | S | S | S | S | S | S | S | S | S |

See numbered footnotes in Disclosures section.

AVALON FEATURES

S = Standard O = Optional P = Available as part of a package

| Interior (continued) | XLE | XLE AWD | XSE Nightshade | Touring | Limited | Limited AWD | XLE Hybrid | XSE Hybrid | Limited Hybrid | TRD |
|---|-----|------------|-------------------|---------|---------|----------------|---------------|---------------|-------------------|-----|
| Two front and two rear cup holders; two front-door and two rear bottle holders | S | S | S | S | S | S | S | S | S | S |
| Electric Parking Brake (EPB) ⁶⁰ with Brake Hold ⁶¹ function | S | S | S | S | S | S | S | S | S | S |
| Safety/Convenience | | | | | | | | | | |
| Star Safety System™ — includes Enhanced Vehicle Stability Control (VSC) ⁶² Traction Control (TRAC), 4-wheel Anti-lock Brake System (ABS), Electronic Brake-force Distribution (EBD), Brake Assist (BA) ⁶³ and Smart Stop Technology® (SST) ⁶⁴ | S | S | S | S | S | S | S | S | S | S |
| Ten airbags ³¹ — includes driver and front passenger Advanced Airbag System, driver and front passenger seat-mounted side airbags, driver and front passenger knee airbags, rear seat-mounted side airbags, and front and rear side curtain airbags | S | S | S | S | S | S | S | S | S | S |
| Driver and front passenger Whiplash-Injury-Lessening (WIL) seats ⁶⁵ | S | S | S | S | S | S | S | S | S | S |
| 3-point seatbelts for all seating positions; driver-side Emergency Locking Retractor (ELR) and Automatic/Emergency Locking Retractor (ALR/ELR) on all passenger seatbelts | S | S | S | S | S | S | S | S | S | S |
| LATCH (Lower Anchors and Tethers for Children) includes lower anchors on outboard rear seats | S | S | S | S | S | S | S | S | S | S |
| Child-protector rear door locks and power window lockout control | S | S | S | S | S | S | S | S | S | S |
| Energy-absorbing collapsible steering column | S | S | S | S | S | S | S | S | S | S |
| Front and rear energy-absorbing crumple zones | S | S | S | S | S | S | S | S | S | S |
| Side-impact door beams | S | S | S | S | S | S | S | S | S | S |
| Tire Pressure Monitor System (TPMS) ⁵⁷ with direct pressure readout | S | S | S | S | S | S | S | S | S | S |
| Collision sensors: deactivate high-voltage battery | | | | | | | S | S | S | |
| Safety Connect ⁴⁸ — includes Emergency Assistance, Stolen Vehicle Locator, ⁶⁶ Roadside Assistance ⁹ and Automatic Collision Notification; with three-year trial subscription ⁵⁰ | S | S | S | S | S | S | S | S | S | S |
| Toyota Safety Sense™ P (TSS-P) ²² — Pre-Collision System with Pedestrian Detection (PCS w/PD) ²³ Lane Departure Alert with Steering Assist (LDA w/SA) ²⁵ Automatic High Beams (AHB) ²⁶ and Full-Speed Range Dynamic Radar Cruise Control (DRCC) ²⁴ | S | S | S | S | S | S | S | S | S | S |
| Blind Spot Monitor (BSM) ²⁸ with Rear Cross-Traffic Alert (RCTA) ³² | S | S | S | S | S | S | S | S | S | S |
| Intelligent Clearance Sonar (ICS) ³⁹ with Rear Cross-Traffic Braking (RCTB) ⁴⁰ | | | | P | P | P | | | P | |
| Hill Start Assist Control (HAC) ⁶⁷ | S | S | S | S | S | S | S | S | S | S |
| Anti-theft system with alarm and engine immobilizer ⁶⁸ | S | S | S | S | S | S | S | S | S | S |
| Vehicle Approach Noise | | | | | | | S | S | S | |
| ToyotaCare ⁶⁹ featuring a no cost maintenance plan with Roadside Assistance | S | S | S | S | S | S | S | S | S | S |

AVALON FEATURES

S = Standard O = Optional P = Available as part of a package

Mechanical/Performance

| | XLE | XLE AWD | XSE Nightshade | Touring | Limited | Limited AWD | XLE Hybrid | XSE Hybrid | Limited Hybrid | TRD |
|---|--------|------------|-------------------|---------|---------|----------------|--------------------------|--------------------------|--------------------------|--------|
| ENGINE | | | | | | | | | | |
| Hybrid engine: 2.5-Liter Dynamic Force 4-Cylinder DOHC 16-Valve D-4S Dual Injection with VVT-iE, VVT-i with ECO, Normal, Sport and EV ² drive modes; 176 hp @ 5700 rpm; 163 lb.-ft. @ 3600-5200 rpm | | | | | | | S | S | S | |
| 3.5-Liter V6 DOHC 24-Valve D-4S Dual Injection with VVT-iW and VVT-i; 301 hp @ 6600 rpm; 267 lb.-ft. @ 4700 rpm | S | | S | S | S | | | | | S |
| 2.5-Liter Dynamic Force 4-Cylinder DOHC 16-Valve D-4S Direct Injection with Dual VVT-i and ECO, Normal and Sport drive modes; 205 hp @ 6600 rpm; 185 lb.-ft. @ 4600 rpm | | S | | | | S | | | | |
| Compression ratio | 11.8:1 | 11.8:1 | 11.8:1 | 11.8:1 | 11.8:1 | 11.8:1 | 14.0:1 | 14.0:1 | 14.0:1 | 11.8:1 |
| EMISSION RATING | | | | | | | | | | |
| Super Ultra Low Emission Vehicle (SULEV) ⁷⁰ | | | | | | | S | S | S | |
| Ultra Low Emission Vehicle II (ULEV-II) | S | S | S | S | S | S | | | | S |
| ELECTRONIC MOTOR | | | | | | | | | | |
| Power output | | | | | | | 118 HP (88 KW) | 118 HP (88 KW) | 118 HP (88 KW) | |
| Torque | | | | | | | 149 LB.-FT. (202 N·M) | 149 LB.-FT. (202 N·M) | 149 LB.-FT. (202 N·M) | |
| Voltage | | | | | | | 650V (MAX SYS.) | 650V (MAX SYS.) | 650V (MAX SYS.) | |
| Hybrid system net power | | | | | | | 215 HP | 215 HP | 215 HP | |
| TRACTION BATTERY | | | | | | | | | | |
| Lithium battery | | | | | | | S | S | S | |
| Voltage | | | | | | | 259 V | 259 V | 259 V | |
| TRANSMISSION | | | | | | | | | | |
| Direct Shift-8AT 8-speed Electronically Controlled automatic Transmission with intelligence (ECT-i) with Sequential Shiftmatic™ Mode | S | S | S | S | S | S | | | | S |
| Electronically controlled Continuously Variable Transmission (ECVT) with Sequential Shiftmatic™ Mode | | | | | | | S | S | S | |
| DRIVETRAIN | | | | | | | | | | |
| Front-Wheel Drive (FWD) | S | | S | S | S | | S | S | S | S |
| All-Wheel Drive (AWD) | | S | | | | S | | | | |
| BODY CONSTRUCTION | | | | | | | | | | |
| Unitized body with front and rear anti-vibration sub-frames | S | S | S | S | S | S | S | S | S | S |
| Increased-thickness underbody braces | | | | | | | | | | S |
| SUSPENSION | | | | | | | | | | |
| Independent MacPherson strut front suspension with stabilizer bar; multi-link rear suspension with stabilizer bar | S | S | | | S | S | S | | S | |
| Independent MacPherson strut front suspension with stabilizer bar; multi-link rear suspension with sport-tuned shock absorbers, stabilizer bar and springs | | | S | S | | | | S | | |
| Independent MacPherson strut front suspension; multi-link rear suspension; TRD track-tuned front and rear coil springs and shock absorbers | | | | | | | | | | S |
| Adaptive Variable Suspension (AVS) system | | | | S | | | | | | |
| STEERING | | | | | | | | | | |
| Electric Power Steering (EPS); power-assisted rack-and-pinion | S | S | S | S | S | S | S | S | S | S |
| Turning circle diameter, curb to curb (ft.) | 37.7 | 37.7 | 38.6 | 38.7 | 38.7 | 38.7 | 37.7 | 38.7 | 38.7 | 38.6 |
| BRAKES | | | | | | | | | | |
| Power-assisted, ventilated 12.0-in. front disc brakes; solid 11-in. rear disc brakes with hydraulic brake booster, Electronically Controlled Braking (ECB) system and Star Safety System™ | S | | S | S | S | | | | | |
| Power-assisted, ventilated 11.65-in. front disc brakes; solid 11.1-in. rear disc brakes with hydraulic brake booster, Electronically Controlled Braking (ECB) system, integrated regenerative braking and Star Safety System™ | | | | | | | S | S | S | |
| Power-assisted ventilated 12-in. front disc brakes; solid 11.06-in. rear disc brakes, Automatic Electric Parking Brake ⁷¹ and Star Safety System™ | | S | | | | S | | | | |
| Power-assisted ventilated 12.9-in. front disc brakes with dual-piston calipers; solid 11.06-in. rear disc brakes with hydraulic brake booster; red painted front and rear calipers; unique brake booster and pedal stiffness tuning; Electronically Controlled Braking (ECB) system and Star Safety System™ | | | | | | | | | | S |
| Active Cornering Assist (ACA) | | | | S | | | | | | S |

See numbered footnotes in Disclosures section.

AVALON FEATURES

S = Standard O = Optional P = Available as part of a package

Dimensions

| | XLE | XLE AWD | XSE Nightshade | Touring | Limited | Limited AWD | XLE Hybrid | XSE Hybrid | Limited Hybrid | TRD |
|--|-----------|------------|-------------------|-----------|-----------|----------------|---------------|---------------|-------------------|-----------|
| EXTERIOR DIMENSIONS (in.) | | | | | | | | | | |
| Overall height, unloaded | 56.5 | 56.7 | 56.5 | 56.5 | 56.5 | 56.7 | 56.5 | 56.5 | 56.5 | 55.9 |
| Overall width | 72.8 | 72.8 | 72.8 | 72.8 | 72.8 | 72.8 | 72.8 | 72.8 | 72.8 | 72.8 |
| Overall length | 195.9 | 195.9 | 195.9 | 195.9 | 195.9 | 195.9 | 195.9 | 195.9 | 195.9 | 195.9 |
| Wheelbase | 113.0 | 113.0 | 113.0 | 113.0 | 113.0 | 113.0 | 113.0 | 113.0 | 113.0 | 113.0 |
| Ground clearance | 5.3 | 5.9 | 5.3 | 5.3 | 5.3 | 5.8 | 5.3 | 5.3 | 5.3 | 5.3 |
| Track (front/rear) | 63.0/63.6 | 63.0/63.6 | 62.6/63.4 | 62.6/63.4 | 62.6/63.4 | 62.6/63.2 | 63.0/63.6 | 62.3/63.6 | 62.3/63.6 | 62.6/63.4 |
| Coefficient of drag (Cd) | 0.27 | 0.27 | 0.27 | 0.27 | 0.27 | 0.27 | 0.27 | 0.27 | 0.27 | 0.27 |
| INTERIOR DIMENSIONS (in.). | | | | | | | | | | |
| Head room | 37.4/37.5 | 38.5/37.9 | 37.4/37.5 | 37.4/37.5 | 37.4/37.5 | 38.5/37.9 | 37.4/37.1 | 37.4/37.1 | 37.4/37.1 | 37.4/37.5 |
| Shoulder room | 58.3/57.1 | 58.3/57.1 | 58.3/57.1 | 58.3/57.1 | 58.3/57.1 | 58.3/57.1 | 58.3/57.1 | 58.3/57.1 | 58.3/57.1 | 58.3/57.1 |
| Hip room | 55.8/54.8 | 55.8/54.7 | 55.8/54.8 | 55.8/54.8 | 55.8/54.8 | 55.8/54.7 | 55.8/54.7 | 55.8/54.7 | 55.8/54.7 | 55.8/54.8 |
| Leg room | 42.1/40.3 | 42.1/40.4 | 42.1/40.3 | 42.1/40.3 | 42.1/40.3 | 42.1/40.4 | 42.1/40.4 | 42.1/40.4 | 42.1/40.4 | 42.1/40.3 |
| WEIGHTS/CAPACITIES | | | | | | | | | | |
| Curb weight (lb.) | 3560 | 3580 | 3670 | 3715 | 3695 | 3705 | 3610 | 3685 | 3695 | 3655 |
| EPA passenger volume (cu. ft.) | 104.3 | 103.8 | 102.9 | 102.9 | 102.9 | 102.6 | 103.8 | 102.2 | 102.2 | 102.9 |
| Cargo volume, ⁴¹ rear seatbacks up (cu. ft.) | 16.09 | 16.09 | 16.09 | 16.09 | 16.09 | 16.09 | 16.09 | 16.09 | 16.09 | 16.09 |
| Fuel tank (gal.) | 14.5 | 14.4 | 15.8 | 15.8 | 15.8 | 14.4 | 13.2 | 13.2 | 13.2 | 15.8 |
| Seating capacity | 5 | 5 | 5 | 5 | 5 | 5 | 5 | 5 | 5 | 5 |
| TIRES | | | | | | | | | | |
| Type: All-season | S | S | S | S | S | S | S | S | S | S |
| Spare: Temporary | S | S | S | S | S | S | S | S | S | S |
| Mileage estimates (mpg city/highway/combined) ²⁷ | 22/32/26 | 25/34/28 | 22/31/25 | 22/31/25 | 22/31/25 | 25/34/28 | 43/44/44 | 43/43/43 | 43/43/43 | 21/30/25 |

DISCLOSURES

1. Extra-cost color. 2. SofTex® is a registered trademark of Toyota Motor Sales, U.S.A., Inc. 3. Ultrasuede® is a registered trademark of Toray Industries, Inc. 4. EPA-estimated 22 city/32 highway/26 combined mpg for 2021 Avalon XLE with 3.5L V6 engine. Use for comparison purposes only. Your mileage will vary for many reasons, including your vehicle's condition and how/where you drive. See www.fueleconomy.gov. 5. EV Mode lets you operate solely on battery power at low speeds for short distances and in limited circumstances, such as in a parking garage. Different conditions may prevent or limit usage. See your *Owner's Manual* for limitations and details. 6. EPA-estimated 43 city/44 highway/44 combined mpg for 2021 Avalon Hybrid XLE. Use for comparison purposes only. Your mileage will vary for many reasons, including your vehicle's condition and how/where you drive. See www.fueleconomy.gov. 7. Connected Services depends on an operative telematics device, a cellular connection, navigation map data, GPS signal strength and other factors outside of Toyota's control, all of which can limit system functionality or availability, including access to response center and emergency support. Service may vary by vehicle and region. Subscription required after trial. Terms of Use apply. Data charges may apply. Apps and services subject to change at any time without notice. See toyota.com/connected-services for details. To learn about Toyota's data collection, use, sharing and retention practices, please visit <https://www.toyota.com/privacyvts/>. Stolen vehicle police report required to use Stolen Vehicle Locator. 8. Safety Connect® depends on an operative telematics device, a cellular connection, GPS signal strength and other factors outside of Toyota's control, all of which can limit system functionality or availability, including access to response center and emergency support. Stolen vehicle police report required to use Stolen Vehicle Locator. Some features may require the Toyota app. Registration required. Subscription required after trial. Service subject to change at any time without notice. Terms of Use apply. Data charges may apply. Service may vary by vehicle and region. See usage precautions and service limitations in *Owner's Manual* and at toyota.com/connected-services/ for additional details. To learn about Toyota's data collection, use, sharing and retention practices, please visit <https://www.toyota.com/privacyvts/>. 9. Requires adequate cellular coverage and GPS signal strength. May not work in all areas. Service may vary by vehicle and region. See Toyota Dealer for details and exclusions. 10. Information provided is based on the last time data was collected from the vehicle and may not be up to date. Service Connect depends on an operative telematics device, a cellular connection, navigation map data, GPS signal strength and other factors outside of Toyota's control, which can limit functionality or availability. Service may vary by vehicle and region. Registration required. Service subject to change at any time without notice. Terms and conditions of subscription service agreement apply. See usage precautions and service limitations in *Owner's Manual* and at toyota.com/connected-services for additional details. To learn about Toyota's data collection, use, sharing and retention, please visit <https://www.toyota.com/privacyvts/>. 11. Use only if aware of circumstances surrounding vehicle and it is legal and safe to do so (e.g., do not remotely start engine if vehicle is in an enclosed space or vehicle is occupied by a child). Toyota's Remote Connect depends on an operative telematics device, a cellular connection, GPS signal strength and other factors outside of Toyota's control, which can limit system functionality and availability. Service may vary by vehicle and region. Registration and Toyota app download required. Subscription required after trial. Terms of Use apply. Data charges may apply. Remote start/stop not available on manual-transmission-equipped vehicles. Services subject to change at any time without notice. See usage precautions and service limitations in *Owner's Manual* and at <https://www.toyota.com/connected-services> for additional details. To learn about Toyota's data collection, use, sharing and retention practices, please visit <https://www.toyota.com/privacyvts/>. 12. Wi-Fi Connect is available on select 2018 and newer Toyota vehicles. Visit toyota.com for vehicle availability. Verizon Wireless is the network provider for Wi-Fi Connect, which uses Verizon's 4G LTE network to transmit data. Data usage and charges apply. Coverage not available everywhere; see vzw.com. See verizonwireless.com/bestnetwork for details. LTE is a trademark of ETSI. Other terms apply. Up to 5 devices can be supported using in-vehicle connectivity. Verizon Wireless data subscription required upon end of 6-month trial period or use of 2-GB data (whichever comes first). Use of Wi-Fi Connect subject to Verizon Wireless' Customer Agreement (verizonwireless.com/legal/notices/customer-agreement/), Privacy Policy (verizon.com/about/privacy/privacy-policy-summary), and data use policies (verizonwireless.com/support/vz-email-legal/). Apps and services subject to change at any time without notice. 13. Destination Assist depends on an operative telematics device, a cellular connection, navigation map data and GPS signal strength and other factors outside of Toyota's control, which can limit system ability functionality or availability. Use common sense when relying on this information. Service may vary by vehicle and region. Registration required. Services subject to change at any time without notice. Terms of Use apply. See *Owner's Manual* and toyota.com/connected-services for additional limitations and details. To learn about Toyota's data collection, use, sharing and retention practices, please visit <https://www.toyota.com/privacyvts/>. 14. Apps and services are subject to change at any time without notice. Data charges may apply. Apple CarPlay® functionality requires a compatible iPhone® connected with an approved data cable into the USB media port. Apple CarPlay® is a registered trademark of Apple Inc. 15. iPod® and iPhone® are registered trademarks of Apple Inc. All rights reserved. 16. Android is a trademark of Google LLC. 17. Vehicle user interface is a product of Google and its terms and privacy statement apply. To use Android Auto on your audio display, you'll need an Android Auto compatible vehicle and Android phone. For phone compatibility visit: <https://www.android.com/auto/>. Requires compatible smartphone connected with an approved data cable into the USB media port, and data plan rates apply. Apps and services vary by phone carrier and are subject to change at any time without notice. Android, Android Auto and Waze are trademarks of Google. 18. SiriusXM® audio services require a subscription sold separately by Sirius XM Radio Inc. If you decide to continue service after your trial, the subscription plan you choose will automatically renew thereafter and you will be charged according to your chosen payment method at then-current rates. Fees and taxes apply. To cancel, you must call SiriusXM at 1-866-635-2349. See SiriusXM Customer Agreement for complete terms at www.siriusxm.com. All fees and programming subject to change. Not all vehicles or devices are capable of receiving all services offered by SiriusXM. Current information and features may not be available in all locations, or on all receivers. ©2021 Sirius XM Radio Inc. SiriusXM and all related marks and logos are trademarks of Sirius XM Radio Inc. 19. SiriusXM All Access trial length and service availability may vary by model, model year or trim. 20. Amazon, Alexa and all related logos are trademarks of Amazon.com, Inc. or its affiliates. Certain functions require adequate signal strength and smartphone technology/connectivity. Not all Amazon Alexa functionality is available for in-vehicle use. See applicable app for details. Download of the Toyota+Alexa app is required to begin in-vehicle use of Alexa. Data charges may apply for certain functions. Apps, prices and services subject to change at any time without notice. To learn more, go to <https://www.toyota.com/audio-multimedia>. To learn more about Toyota's data collection, use, sharing and retention practices, please visit <https://www.toyota.com/privacyvts/>. 21. JBL® and Clari-Fi® are registered trademarks of Harman International Industries, Inc. 22. Toyota Safety Sense™ effectiveness is dependent on many factors including road, weather and vehicle conditions. Drivers are responsible for their own safe driving. Always pay attention to your surroundings and drive safely. See *Owner's Manual* for additional limitations and details. 23. The Pre-Collision System (PCS) with Pedestrian Detection (PD) is designed to determine if impact is imminent and help reduce impact speed and damage in certain frontal collisions involving a vehicle or a pedestrian. PCS w/PD is not a substitute for safe and attentive driving. System effectiveness depends on many factors, such as speed, size and position of pedestrian and weather, light and road conditions. See *Owner's Manual* for additional limitations and details. 24. Full-Speed Range Dynamic Radar Cruise Control (DRCC) is designed to assist the driver and is not a substitute for safe and attentive driving practices. System effectiveness is dependent on many factors including road, weather and traffic conditions. Vehicles with manual transmission have regular DRCC. See *Owner's Manual* for additional limitations and details. 25. Lane Departure Alert with Steering Assist is designed to read visible lane markers under certain conditions. It provides a visual and audible alert and slight steering force when lane departure is detected. It is not a collision-avoidance system or a substitute for safe and attentive driving. Effectiveness is dependent on many factors including road, weather and vehicle conditions. See *Owner's Manual* for additional limitations and details. 26. Automatic High Beams operate at speeds above 25 mph. Factors such as a dirty windshield, weather, lighting and terrain limit effectiveness, requiring the driver to manually operate the high beams. See *Owner's Manual* for additional limitations and details. 27. 2021 EPA-estimated mileage. Use for comparison purposes only. Your mileage will vary for many reasons, including your vehicle's condition and how/where you drive. 28. Do not rely exclusively on the Blind Spot Monitor. Always look over your shoulder and use your turn signal. There are limitations to the function, detection and range of the monitor. See *Owner's Manual* for additional limitations and details. 29. The Smart Key System may interfere with some pacemakers or cardiac defibrillators. If you have one of these medical devices, please talk to your doctor to see if you should deactivate this system. 30. May not be compatible with all mobile phones, MP3/WMA players and like models. 31. Airbag systems are Supplemental Restraint Systems and are designed to inflate only under certain conditions and in certain types of severe collisions. To decrease the risk of injury from an inflating airbag, always wear seatbelts and sit upright in the middle of the seat as far back as possible. Do not put objects in front of an airbag or around the seatback. Do not use a rearward-facing child seat in any front passenger seat. See *Owner's Manual* for additional limitations and details. 32. Do not rely exclusively on the Rear Cross-Traffic Alert system. Always look over your shoulder and use your mirrors to confirm rear clearance. There are limitations to the function, detection and range of the system. See *Owner's Manual* for additional limitations and details. 33. Dynamic Navigation depends on an operative telematics device, a cellular connection, navigation map data and GPS signal strength, and other factors outside of Toyota's control, which can limit system functionality or availability. Services not available in every city or roadway. Use common sense when relying on information provided. Service may vary by vehicle and region. Registration is required. Terms of Use apply. See *Owner's Manual* and <https://toyota.com/connected-services> for additional limitations and details. To learn about Toyota's data collection, use, sharing and retention practices, please visit <https://www.toyota.com/privacyvts/>. 34. The Dynamic Navigation three-year trial period begins on the original date of purchase or lease of a new vehicle. After the trial period expires, enrollment in paid subscription is required to access the service. 35. Qi wireless charging may not be compatible with all mobile phones, MP3/WMA players and like models. When using the wireless charging system, avoid placing metal objects between the wireless charger and the mobile device when charging is active. Doing so may cause metal objects to become hot and could cause burns. 36. HomeLink® and the HomeLink® house icon are registered trademarks of Gentex Corporation. 37. This floor mat/floor liner was designed specifically for use in your model and model year vehicle and SHOULD NOT be used in any other vehicle. To avoid potential interference with pedal operation, each mat/liner must be secured with its fasteners. Do not install a floor mat/floor liner on top of an existing floor mat/floor liner. 38. The Bird's Eye View Camera does not provide a comprehensive view of the area surrounding the vehicle and you should also look around the vehicle, using mirrors to confirm surrounding clearance. Environmental conditions may limit effectiveness and view may become obscured. See *Owner's Manual* for additional limitations and details. 39. Intelligent Clearance Sonar (ICS) is designed to assist drivers in avoiding potential forward and rearward collisions at speeds of 9 mph or less. Certain vehicle and environmental factors, including an object's shape, size and composition, may affect the system's effectiveness. Always look around outside the vehicle and use mirrors to confirm clearance. See *Owner's Manual* for additional limitations and details. 40. Do not rely exclusively on the Rear Cross-Traffic Braking system. Always look over your shoulder and use your mirrors to confirm rear clearance. The system cannot prevent all collisions, and performance is dependent on road, weather and vehicle conditions. See *Owner's Manual* for additional limitations and details. 41. Cargo and load capacity limited by weight and distribution. Always properly secure cargo and cargo area. 42. Toyota strives to build vehicles to match customer interest and thus they typically are built with popular options and option packages. Not all options/packages are available separately and some may not be available in all regions of the country. See toyota.com for information about options/packages commonly available in your area. If you would prefer a vehicle without any or with different options, contact your dealer to check for current availability or the possibility of placing a special order. Color(s) depicted may vary based on multiple factors, including ambient lighting and the format in which it is being viewed (e.g., computer, mobile device or print). 43. Genuine Toyota Paint Protection Film by 3M™ is designed for specific sections of the vehicle most prone to chipping and may vary depending on vehicle model. Select applications may require an additional charge. Toyota Genuine

DISCLOSURES

Accessory Warranty only applies when installation is performed by a trained Toyota-approved installer. See Toyota dealer for details. **44.** Voice recognition capabilities vary by head unit. **45.** The Bluetooth® word mark and logos are registered trademarks owned by Bluetooth SIG, Inc., and any use of such marks by Toyota is under license. A compatible Bluetooth®-enabled phone must first be paired. Phone performance depends on software, coverage and carrier. **46.** The Scout® GPS Link app is compatible with select vehicle models. Availability and accuracy of the information provided by Scout® GPS Link is subject to change at any time without notice and is dependent upon many factors, including smartphone connectivity, capability and cellular reception. Always use safe driving practices and follow all traffic rules. Data charges may apply. Scout® and Telenav® are registered trademarks of Telenav, Inc. **47.** The Scout® GPS Link trial is at no extra cost and begins when the app is downloaded on the vehicle. Contact the Toyota Customer Experience Center at 800-331-4331 for length of trial period. After the trial period expires, enrollment in a paid subscription is required to access the service. Terms and conditions apply. **48.** Always focus on the road while driving. Siri® is available on select iPhone®/iPad® models and requires Internet access. Siri® is not available in all languages or all areas and features vary by area. Some Siri® functionality and commands are not accessible in the vehicle. See apple.com and phone carrier for details. Data charges may apply. Siri® is a registered trademark of Apple Inc. **49.** HD Radio™ Technology manufactured under license from iBiquity Digital Corporation U.S. and Foreign Patents. HD Radio™ and the HD, HD Radio, and "Arc" logos are proprietary trademarks of iBiquity Digital Corp. **50.** The Safety Connect® trial period is at no extra cost and begins on the original date of purchase or lease of a new vehicle. Paid subscription required after trial to access the service. **51.** The Service Connect trial period is at no extra cost and begins on the original date of purchase or lease of a new vehicle. After the respective trial period expires, enrollment in paid subscription is required to access the service. **52.** The Toyota Remote Connect trial period is at no extra cost and begins on the original date of purchase or lease of a new vehicle. Paid subscription required after trial to access the service. Terms of Use apply. **53.** The Wi-Fi Connect trial period is at no extra cost and begins on the date of activation. After the trial period expires, enrollment in a paid subscription is required to access the service. Terms and conditions apply. **54.** Dynamic voice recognition capabilities vary by head unit. **55.** The Destination Assist trial period is at no extra cost and begins on the original date of purchase or lease of a new vehicle. After the trial period expires, enrollment in a paid subscription is required to access the service. **56.** The backup camera does not provide a comprehensive view of the rear area of the vehicle and you should also look around the vehicle, using mirrors to confirm rearward clearance. Environmental conditions may limit effectiveness and view may become obscured. See *Owner's Manual* for additional limitations and details. **57.** The Tire Pressure Monitor System alerts the driver when tire pressure is critically low. For optimal tire wear and performance, tire pressure should be checked regularly with a gauge; do not rely solely on the monitor system. See *Owner's Manual* for additional limitations and details. **58.** Be sure to obey traffic regulations and maintain awareness of road and traffic conditions at all times. Functionality, availability and accuracy of information provided by the system depends on many factors and service may not be available in every location. Use common sense when relying on information provided. Apps/services vary by phone/carrier. Select apps use large amounts of data; you are responsible for charges. Apps and services subject to change at any time without notice. See toyota.com/connected-services for details. Services and programming subject to change. Updates may be available from your dealer at an additional cost. See *Owner's Manual* for additional limitations and details. **59.** Rated for 12 volts. See *Owner's Manual* for additional limitations and details. **60.** When the system is on, Electric Parking Brake is designed to engage the Parking Brake under limited conditions. It may not hold the vehicle under all conditions. See *Owner's Manual* for additional limitations and details. **61.** When the system is on, Brake Hold is designed to keep the brakes engaged after the driver brings the vehicle to a complete stop. It may not hold the vehicle under certain conditions and does not function when the vehicle is in Reverse. Brake Hold is not a substitute for safe and attentive driving. See *Owner's Manual* for additional limitations and details. **62.** Vehicle Stability Control is an electronic system designed to help the driver maintain vehicle control under adverse conditions. It is not a substitute for safe and attentive driving practices. Factors including speed, road conditions, weather and driver steering input can all affect whether VSC will be effective in preventing a loss of control. See *Owner's Manual* for additional limitations and details. **63.** Brake Assist is designed to help the driver take advantage of ABS and is not a substitute for safe driving practices. Braking effectiveness also depends on proper vehicle maintenance, tire and road conditions. See *Owner's Manual* for additional limitations and details. **64.** Smart Stop Technology® operates only in the event of certain contemporaneous brake and accelerator pedal applications. When engaged, the system will reduce power to help the brakes bring the vehicle to a stop. Factors including speed, road conditions and driver input can all impact stopping distance. Smart Stop Technology® is not a substitute for safe and attentive driving and does not guarantee instant stopping. See *Owner's Manual* for additional limitations and details. **65.** Whiplash-Injury-Lessening front seats can help reduce the severity of whiplash injury in certain rear-end collisions. **66.** Building and/or parking structures may limit system effectiveness. Stolen vehicle police report required to use Stolen Vehicle Locator. For additional assistance contact the Toyota Customer Experience Center at 1-800-331-4331. **67.** Hill Start Assist Control is designed to help minimize backward rolling on steep ascents. It is not a substitute for safe driving judgment and practices. Factors including speed, grade, surface conditions and driver input can all affect whether HAC will be effective in preventing a loss of control. See *Owner's Manual* for additional limitations and details. **68.** The engine immobilizer is a state-of-the-art anti-theft system that is initiated when you insert your key into the ignition switch or bring a Smart Key fob into the vehicle. The engine will only start if the code in the transponder chip inside the key/fob matches the code in the vehicle's immobilizer. The transponder chip is embedded in the key/fob and can be costly to replace. If you lose a key or fob, your Toyota dealer can help or go to www.aloa.org to find a qualified locksmith in your area who can perform high-security key service. **69.** ToyotaCare covers normal factory scheduled maintenance for two years or 25,000 miles, whichever comes first. Certain models require a different maintenance schedule as described in their Maintenance Guide. 24-hour Roadside Assistance is also included for two years, unlimited mileage. Roadside Assistance does not include parts and fluids, except emergency fuel delivery. See Toyota dealer for details and exclusions. Valid only in the continental U.S. **70.** Meets Tier 2/Bin 3 Federal emissions standard. **71.** When the system is on, Automatic Electric Parking Brake is designed to automatically engage the Electric Parking Brake under limited conditions. It may not hold the vehicle under all conditions and does not function when the vehicle is in Reverse. Automatic Electric Parking Brake is not a substitute for manual use of the Electric Parking Brake. See *Owner's Manual* for additional limitations and details.

Toyota strives to build vehicles to match customer interest and thus they typically are built with popular options and option packages. Not all options/packages are available separately and some may not be available in all regions of the country. See toyota.com for information about options/packages commonly available in your area. If you would prefer a vehicle without any or with different options, contact your dealer to check for current availability or the possibility of placing a special order.

Color(s) depicted may vary based on multiple factors, including ambient lighting and the format in which it is being viewed (e.g., computer, mobile device or print).

Some vehicles are shown with available equipment. Seatbelts should be worn at all times. For details on vehicle specifications, standard features and available equipment in your area, contact your Toyota dealer. A vehicle with particular equipment may not be available at the dealership. Ask your Toyota dealer to help locate a specifically equipped vehicle.

All information presented herein is based on data available at the time of posting, is subject to change without notice and pertains specifically to mainland U.S.A. vehicles only. Vehicles shown may be prototypes, shown using visual effects and/or shown with options. Actual models may vary.



Mobility

For Toyota Mobility program details, go to www.toyota.com/mobility or call the Toyota Brand Engagement Center at 1-800-331-4331