



TOYOTA

Setting up Bluetooth® Pairing

To begin the Bluetooth® Pairing process, press the HOME button on the faceplate of the audio multimedia system. Pairing your phone is the first step in connecting with your Toyota via Bluetooth® wireless technology.

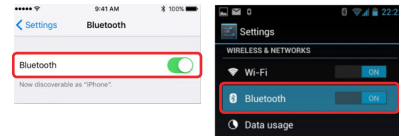


Audio/Audio Plus

Premium Audio

Note:
Do not attempt the Bluetooth® Pairing process while driving.

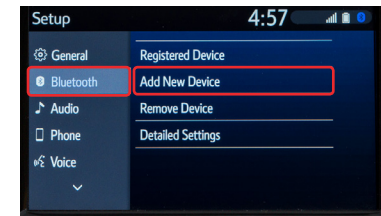
STEP 1 Press [MENU] on the faceplate, then select "Setup" on display screen.



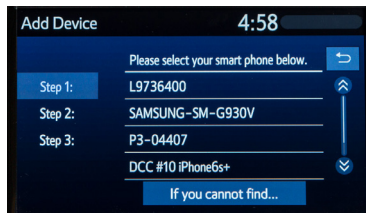
iPhone Bluetooth® Menu

Android Bluetooth® Menu

STEP 2 Ensure Bluetooth® is turned on for your phone.



STEP 3 Select "Bluetooth," then select "Add New Device" on display screen.



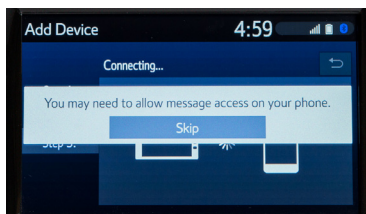
STEP 4 Select "Phone Name."



STEP 5 Check the display on your phone. Does the PIN XXXX match the PIN displayed? If it does, select "Pair."

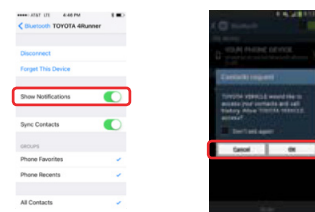


STEP 6 "Connecting" displays while phone is forming the connection to the audio multimedia system.



STEP 7 Enable Notifications (text message). While pairing your phone this message will display: "You may need to allow message access on your phone."

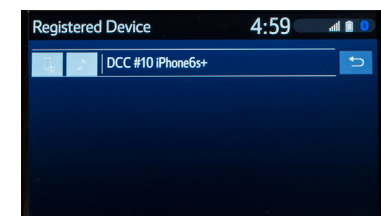
Note: You may also select "Skip" on display screen to skip enabling notifications. If skipped proceed to **STEP 9**.



iPhone

Android

STEP 8 Turn on "Show Notifications" for iPhone® or "ON" for Android.



STEP 9 A confirmation will appear once your phone is paired and connected.

Several factors may affect smartphone and/or system performance including: 1. Smartphone operating system software version, 2. Smartphone battery power level, 3. Poor cellular reception to the smartphone, 4. Multiple applications running on a smartphone at the same time. 5. Smartphone operating system updates may affect functionality.