

## Getting Started

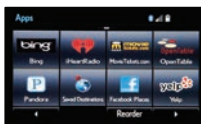


## HOW TO Setup Entune App Suite In Your Toyota

### Is Entune® App Suite already installed?

Your Toyota vehicle may have come with Entune App Suite pre-installed.

To confirm, press APPS on your Entune multimedia head unit.



Tip: After pressing APPS, either use the right arrow on the bottom right or swipe the screen to the right to see if the Entune App Suite is installed (e.g. Bing, Pandora, etc.)

Did you see any apps?

NO If apps do not appear, proceed with this guide.

YES If apps appear, proceed with this guide and skip STEP 4.

Only Entune Premium Audio and Entune Premium JBL® Audio include Entune App Suite and Navigation. Entune Audio and Entune Audio Plus do not include Entune App Suite or Navigation.

## 1 Download App



### Check your smartphone compatibility with Entune® App Suite

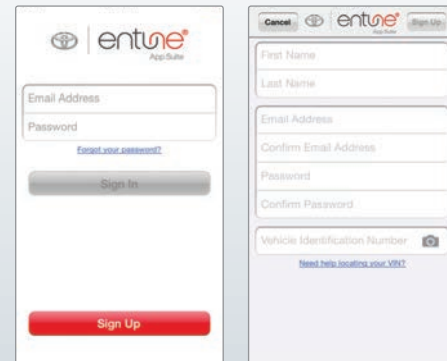
Most iPhone® and Android™ smartphones will work with Entune App Suite. Visit [www.toyota.com/connect](http://www.toyota.com/connect) to verify compatibility.

### Download the Toyota Entune™ App

Tip: Search for "Toyota Entune" in the Apple App Store or Google Play Store.



## 2 Sign-Up



### Launch the Entune App

### Select "Sign Up" to Register

You can also register online at [www.myentune.com](http://www.myentune.com). Please have your VIN on hand.

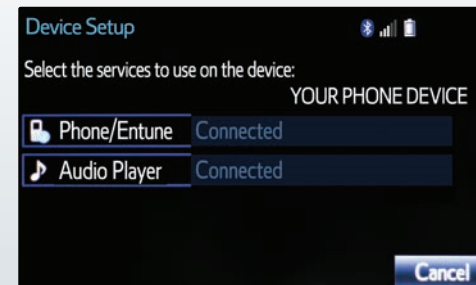
### Enter your name, e-mail, password and VIN

Tip: You can also scan the VIN by selecting the camera icon.

### Link 3rd Party Accounts

To use some apps, they must be linked to your account. After signing up, you will need to select apps you would like to link. Tip: Have login information for third party accounts ready.

## 3 Pair Your Phone



Once successfully paired, your head unit will show your smartphone as "Connected"

### Turn on Bluetooth on your smartphone

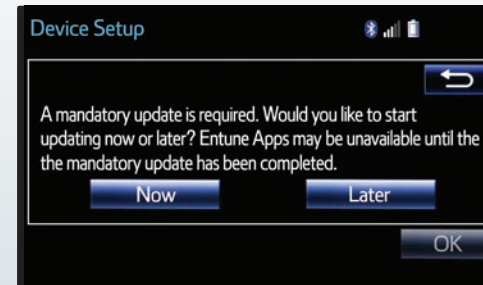
### Access Bluetooth on your Head Unit

Tip: You can find Bluetooth by selecting the Setup button on your vehicle home screen.

### From your smartphone, within Bluetooth settings, add your Toyota vehicle

### From your Head Unit, add your smartphone device

## 4 Install (Skip if already installed)



Your head unit will prompt you to update in order to install Entune App Suite.

### Once your smartphone is successfully paired, launch the Entune App from your smartphone

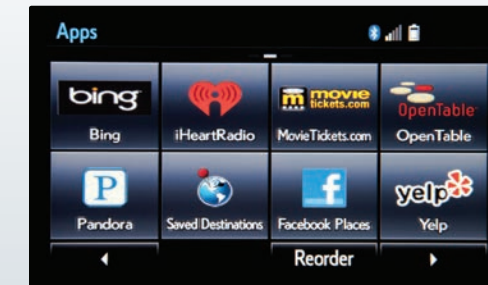
### Press the APPS button on your vehicle's head unit

You will be prompted with a message reminding you that you will need a compatible smartphone connected via Bluetooth in order to add applications. Select OK.

### Select NOW to begin Entune App Suite installation process

Follow the on-screen step-by-step process to complete installation.

## 5 Launch App Suite



Once successfully installed, you will have Entune App Suite available on your Toyota vehicle.

### Once Entune App Suite is installed, select OK

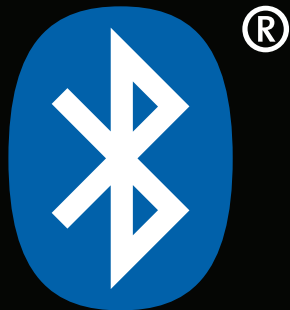
### Press the APPS button on your vehicle head unit

Entune App Suite will now be available.

### ADDITIONAL RESOURCES

➤ [www.toyota.com/entune](http://www.toyota.com/entune)  
Learn more about Entune

➤ [www.toyota.com/connect](http://www.toyota.com/connect)  
Check your phone compatibility



## Getting Started

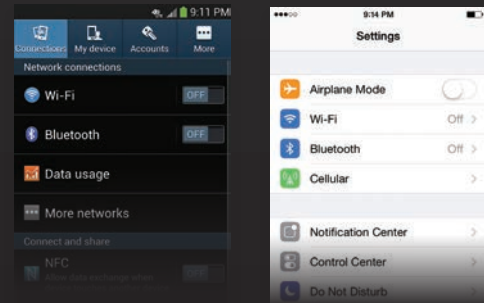


Pairing your phone is the first step in connecting with your Toyota for hands-free calling and for audio streaming via Bluetooth.

The pairing process is quick and easy: most smartphones have Bluetooth integrated; all you have to do is setup the phone and multimedia system to “talk” to each other and form a connection. This Bluetooth pairing guide is available for select 2014 and 2015 models.

For more information on Bluetooth, please visit [www.toyota.com/connect](http://www.toyota.com/connect)

### 1 Turn ON Bluetooth on your smartphone



Settings on Android

Settings on iOS


- Access your smartphone's **SETTINGS**
  - Select **BLUETOOTH** and ensure that it is turned on
- Your phone will seek out Bluetooth devices while remaining discoverable

*Accessing Bluetooth may vary based on your device. For more detailed instructions, please visit [www.toyota.com/connect](http://www.toyota.com/connect)*

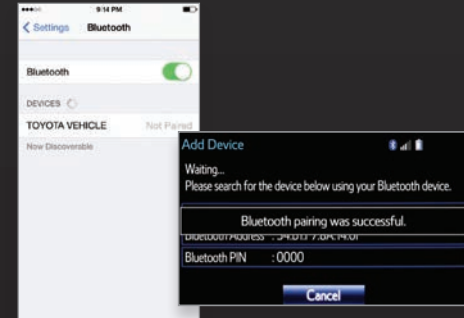
### 2 Initiate Bluetooth on your Entune Multimedia Head Unit



The **SETUP** BUTTON can be found on the top right corner on your head unit home screen.

- While your smartphone is seeking out Bluetooth devices, proceed to your Entune Multimedia Head Unit on your Toyota vehicle
- Select **SETUP** BUTTON on your Home Screen 
- Select **BLUETOOTH**
- Select **ADD**, to add your smartphone

### 3 Add your Toyota to your smartphone



Your smartphone will detect your Toyota vehicle.

- Back on your smartphone, you can now select your **TOYOTA VEHICLE** in Bluetooth Settings

*Tip: You may need to enter the provided Bluetooth PIN on your smartphone.*

Your Entune Multimedia Head Unit will confirm that your smartphone is now paired with Entune

### 4 Enable access to contacts and messaging



Entune will attempt to connect audio and contacts on your phone.

- Once paired, Entune will attempt to connect audio and contacts on your smartphone
- Using your smartphone, you may need to allow Entune access to your messaging and contacts by turning on **SHOW NOTIFICATIONS** (iOS) and **SYNC CONTACTS** (Android)

### 5 Confirmation



Your Entune Multimedia Head Unit will display “Connected” once your phone has been successfully paired and connected.

A confirmation will appear that your smartphone has been paired and connected

#### ADDITIONAL RESOURCES

- ▶ [www.myentune.com](http://www.myentune.com)  
Register and manage your Entune App Suite account online
- ▶ [www.toyota.com/connect](http://www.toyota.com/connect)  
Check your phone compatibility

# HOW TO Bluetooth® Pair Your Smartphone with Your Toyota