



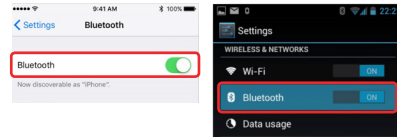
TOYOTA

Setting up Bluetooth® Pairing



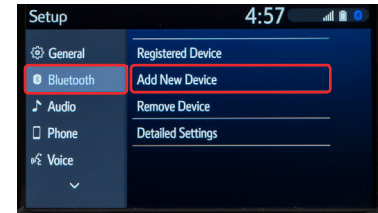
Note:
Do not attempt the Bluetooth® Pairing process while driving.

STEP 1 Press [MENU] on the faceplate, then select "Setup" on display screen.



iPhone Bluetooth Menu **Android Bluetooth Menu**

STEP 2 Ensure Bluetooth is turned on for your device.



STEP 3 Select "Bluetooth," then select "Add New Device" on display screen.



STEP 4 Select "Device Name."



STEP 5 Check the display on your smartphone. Does the PIN XXXX match the PIN displayed? If it does, select "Pair."

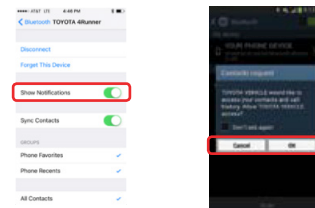


STEP 6 "Connecting" displays while device is forming the connection to your multimedia system.



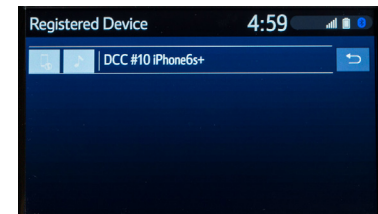
STEP 7 Enable Notifications (text message). While pairing your device this message will display: "You may need to allow message access on your phone."

Note: You may also select "Skip" on display screen to skip enabling notifications. If skipped proceed to **STEP 9**.



iPhone **Android**

STEP 8 Turn on "Show Notifications" for iPhone® or "ON" for Android.



STEP 9 A confirmation will appear once your phone has been paired and connected.