

Compact Trucks

The first pickup truck Toyota sold in the U.S. was a Land Cruiser pickup, which Toyota only offered for sale in 1963. Toyota's second pickup truck was the Stout, a small half-ton truck introduced in 1964. In 1969, Toyota introduced the Hi-Lux compact pickup truck. The Hi-Lux eventually became known as just the Toyota Truck. In 1995, Toyota's compact pickup was renamed the Tacoma.

- **In 1971 Toyota contracted with Atlas Fabricators to manufacture truck beds for Toyota pickups. This was Toyota's first North American production operation.**
- **In 1983, Toyota teamed up with Ivan "Iron Man" Stewart and Steve Millen to begin racing Toyota SR-5 compact trucks in off road racing competition.**
- **A Toyota 4x4 SR5 Xtracab sport truck was featured in the classic 1985 movie, Back to the Future.**

Following a brief appearance by the Land Cruiser pickup, Toyota's first half-ton pickup truck was the Stout, a small compact truck introduced in 1964.

In 1969, Toyota replaced the Stout with a new, compact half-ton pickup named the Hi-Lux. The Hi-Lux name made a slow transition during the 1970s. In 1973, the Hi-Lux is referred to as the Half-Ton Truck in Toyota's product brochures though the nameplate remains Hi-Lux until 1975. Occasionally the Hi-Lux name appeared until the late 1970s, reflecting Toyota's international sales of the compact truck. Toyota continued to use the Hi-Lux name on the company's compact trucks sold in markets around the world, while dropping the name from trucks sold in the U.S. By 1977, the Half-Ton Truck was simply referred to as the Toyota Truck.

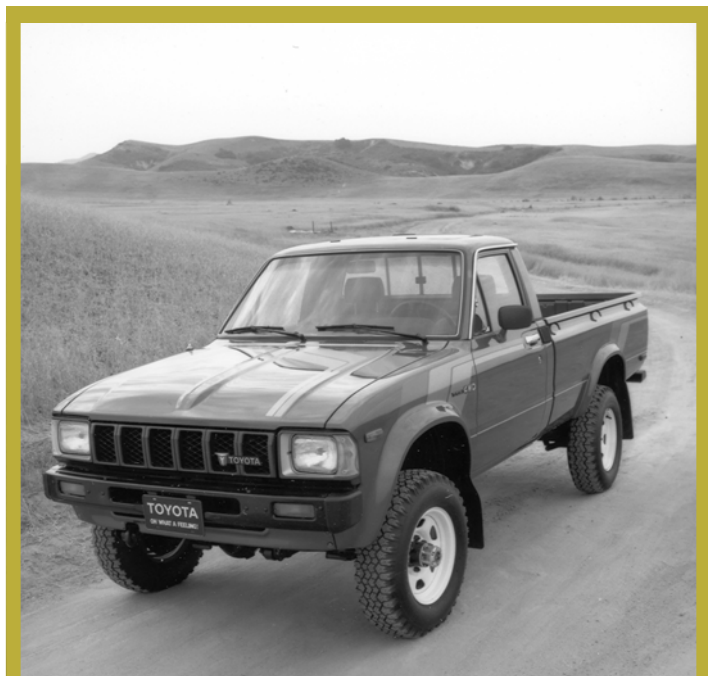
In 1973, In addition to its standard-size half-ton pickup truck, Toyota offered a "stretched" version of its compact truck. The stretched version was 16 inches longer than the standard truck and featured larger rear tires.

In 1975, Toyota introduced the all-new SR-5 Sport Truck. The SR-5 came with racing strip, radial tires, and a 5-speed transmission. The SR-5 was powered by Toyota's new 2.2 liter 20R engine, a new hemi head design engine that had the carburetor and exhaust manifold on opposite sides.

Toyota 4x4 Trucks were introduced in 1979. Eventually, Toyota 4x4 trucks were made available in most model types including SR5, Deluxe, Turbo, Xtracab, and Double Cab.

In 1984 Toyota introduced the Xtra Cab 4x4 to high praise from the news media.





In 1995, the Toyota Truck was renamed the Tacoma. Completely redesigned and built exclusively in the U.S., the Tacoma came with three powerful new engines, enhanced safety features and overall refinements. All Tacoma trucks were built at New United Motor Manufacturing Inc., Toyota's joint venture auto making plant with General Motors in Fremont, California. Tacoma was the sixth-generation Toyota compact pickup truck for the U.S. market and was developed exclusively for the U.S. market. Toyota's Calty Design studios provided the original concept for the Tacoma. The Tacoma came in both regular- and extended-cab models in two- and four-wheel-drive configurations.

Toyota introduced the PreRunner in 1998, available in Regular and Xtracab. The PreRunner name comes from off-road racing, where drivers typically take a durable non-racing truck over the racecourse prior to the race to scout the driving conditions. The PreRunner name suggests the ruggedness of the new Tacoma.

The S-Runner introduced in 2001 featured even bigger wheels and a sport package.

By 2002, the Tacoma line featured 17 different model configurations, based on three cab types – standard, extended Xtracab with rear jump seats, and the four-door Double Cab. The Tacoma standard-cab and Xtracab models featured a 74.5-inch long bed. The Double Cab came with a bed length of 61.5 inches.

In 2004, production of Tacoma trucks began at Toyota's manufacturing plant in Mexico.



Truck Chronology

- 1964 Stout introduced to U.S.
- 1969 Hi-Lux Compact Truck introduced with 1.9L engine.
- 1970 Hi-Lux receives new engine
- 1972 Third generation engine debuts in Hi-Lux.
- 1973 Second generation Hi-Lux.
Extended Cargo-Bed available
- 1974 Hi-Lux wins “Pickup Truck of the Year” from Pickup, Van & 4WD magazine
- 1975 Third generation compact truck with a larger engine
5-speed manual transmission available
- 1977 One millionth Truck produced
SR-5 Grade introduced
- 1978 Fourth generation pickup truck introduced
- 1981 Larger gasoline engine and diesel engine option
- 1983 Fifth generation pickup truck introduced.
Last year of 4-speed manual transmission.
- 1984 Xtracab, turbocharged gasoline and diesel engines available.
- 1986 Last year of diesel engine availability
- 1989 Sixth generation pickup truck introduced, introduction of V-6
Motor Trend “Truck of the Year” award
Four Wheeler Magazine “Pickup Truck of the Year.”
- 1995 Introduction of Tacoma name
- 1998 Tacoma PreRunner Xtracab introduced.
- 1999 Tacoma PreRunner added regular cab.
- 2001 S-Runner introduced
4-door Tacoma Double Cab introduce

